



Forestry England

Growing the nation's forests

A proposed new woodland near Sleetbeck in Cumbria

We are planting new woodlands to expand the nation's forests we care for

We are working on designs for a new woodland in Cumbria, near the hamlet of Sleetbeck, which will join on to Kershope Forest. We would like your comments and suggestions on our initial proposals. Your feedback will inform our final designs for the woodland.

Working with public and private landowners, we're choosing the right places for woodlands to grow and flourish, carefully planting a mix of tree species to be resilient in our changing climate.

Every new woodland will have public access so you can explore and enjoy them to support your health and wellbeing. They will be valuable places for wildlife,

often linking other woods to provide green corridors for wildlife to move and thrive across the landscape.

Our plans are part of the government's commitment to increasing tree planting rates across the UK to 30,000 hectares per year by the end of this parliament, supported by the Nature for Climate Fund. We aim to plant at least 2,000 hectares of new, high-quality, predominantly broadleaved woodlands across England.

In time, each new woodland will provide sustainable timber, contributing to a green economy. And they'll have wider environmental benefits including absorbing carbon, improving soil health and air quality, and combating flooding.

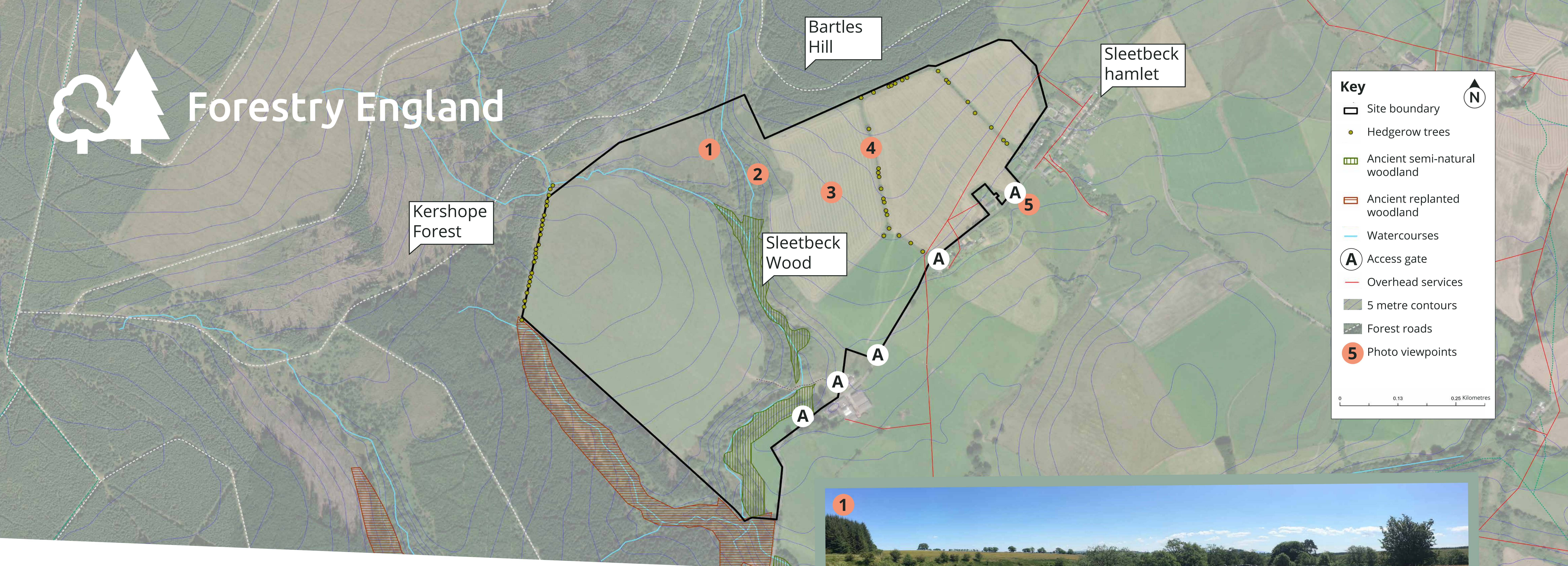
Scan the QR code to find out more:

forestryengland.uk





Forestry England

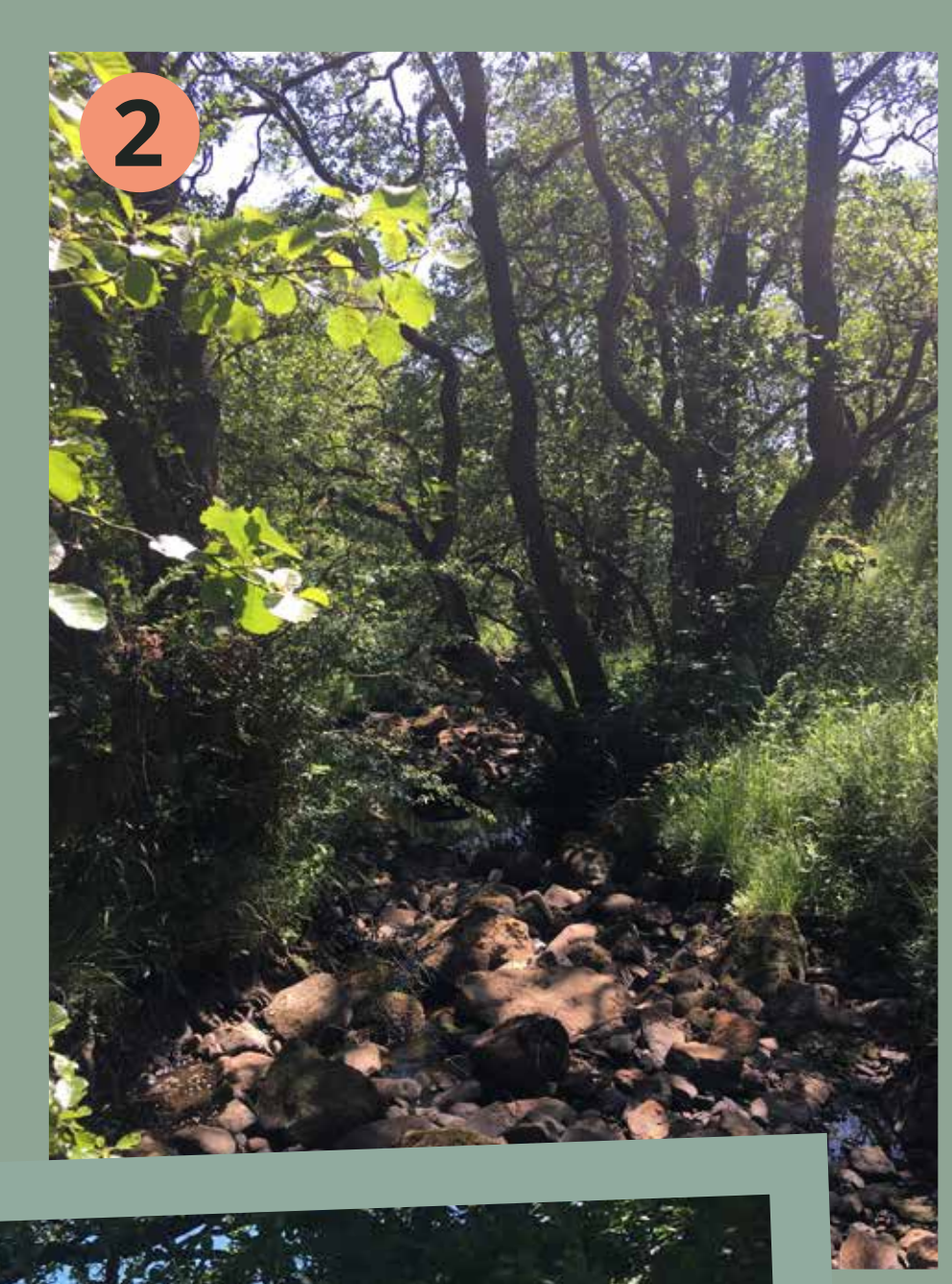


The existing site

The proposed new woodland is in Cumbria, close to the hamlet of Sleetbeck and next to Kershope Forest, approximately 6km from the Scottish border.

It lies within Natural England's National Character Area (NCA) 05 Border Moors and Forests and has an upland plateau lying to the south of a natural high ridge of hills that form the border with Scotland.

1: Panoramic view east to west from marsh grassland in site overlooking riparian woodland, Ancient Semi-Natural Woodland (ASNW) and sheepfold remains. 2: View south into ASNW. 3: Looking east from the site over conifer edge of Kershope Forest and remaining hedgerow field boundary. 4: View southeast over Sleetbeck and surrounding landscape. 5: View northwest from Sleetbeck towards Kershope Forest.





Forestry England



Key

Site boundary	Broadleaved woodland planting
Hedgerow trees	Evenly mixed conifer and broadleaved woodland planting
Ancient semi-natural woodland	Conifer woodland planting with some mixed broadleaves
Ancient replanted woodland	Naturally regenerating broadleaved trees
Watercourses	Wood pasture
Public access gate	Operational forestry access point
Overhead services	Operational forestry access track
5 metre contours	Grass path
Forest roads	
Types of woodland	

0 0.13 0.26 Kilometres

How the new woodland could look

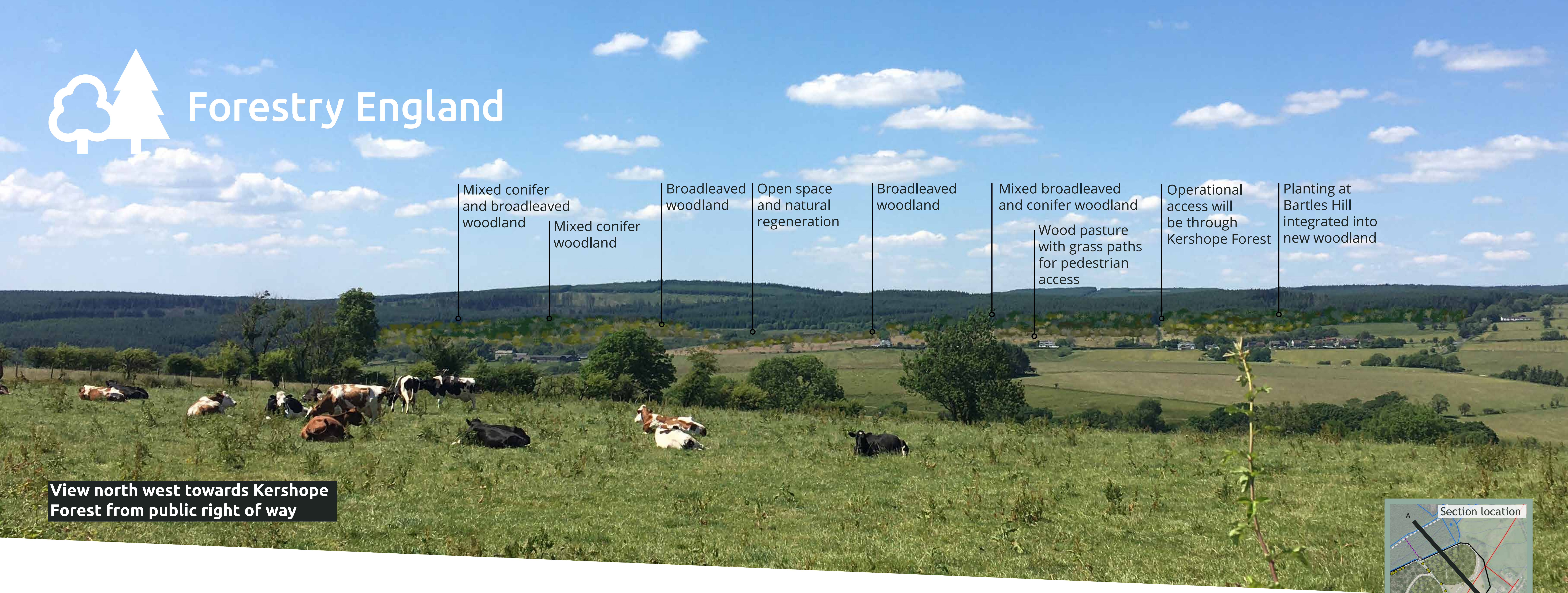
Our proposed designs for the new woodland will have benefits to people, wildlife and the wider landscape. They will draw on detailed site surveys, as well as feedback from our local communities, to shape how the new woodland could look.

Objectives for the new woodland

- Public access for health and wellbeing:** create low-key public recreation opportunities with new areas for people to walk in the woodland.
- Provide landscape improvements:** to the existing Kershope Forest.
- Thriving habitats for wildlife:** enhance existing wet woodland habitats and create new wildlife habitats connecting into Kershope Forest.
- Benefits for the wider landscape:** capture carbon, help to reduce soil erosion and flooding, and improve the soil and air quality.
- Future forest resources and resilience:** plant a mix of trees for a lasting supply of sustainable timber.

Types of woodland we could plant

1 Douglas fir with western red cedar, western hemlock, silver birch	2 Alder with hornbeam, rowan, silver birch, hawthorn, aspen	3 Silver birch with rowan, aspen, juniper, hawthorn	4 Scots pine with silver birch, rowan, juniper
5 Sycamore with hornbeam, beech, crab apple, blackthorn, elder	6 Sycamore with hawthorn, birch, crab apple, guelder rose, elder	7 Aspen with rowan, hawthorn, silver birch, blackthorn	



View north west towards Kershope Forest from public right of way

Mixed conifer and broadleaved woodland

Mixed conifer woodland

Broadleaved woodland

Open space and natural regeneration

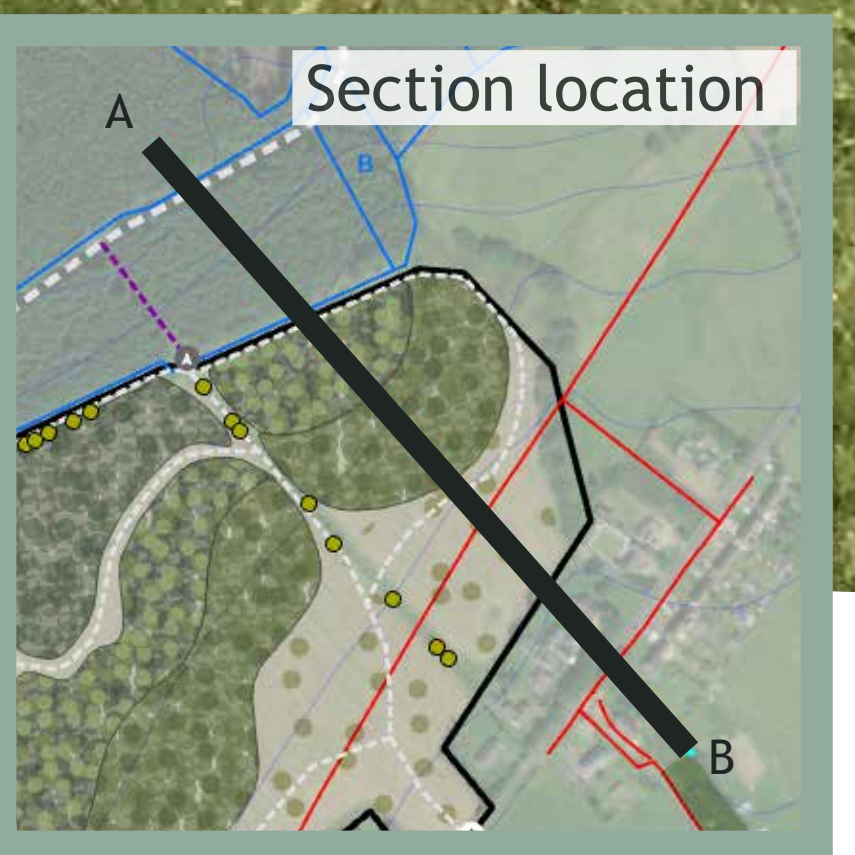
Broadleaved woodland

Mixed broadleaved and conifer woodland

Wood pasture with grass paths for pedestrian access

Operational access will be through Kershope Forest

Planting at Bartles Hill integrated into new woodland

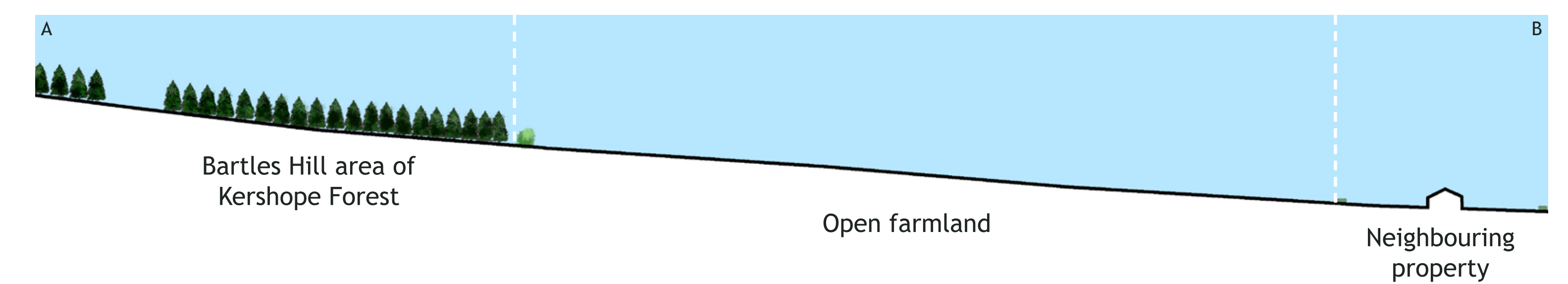


How the new woodland could look

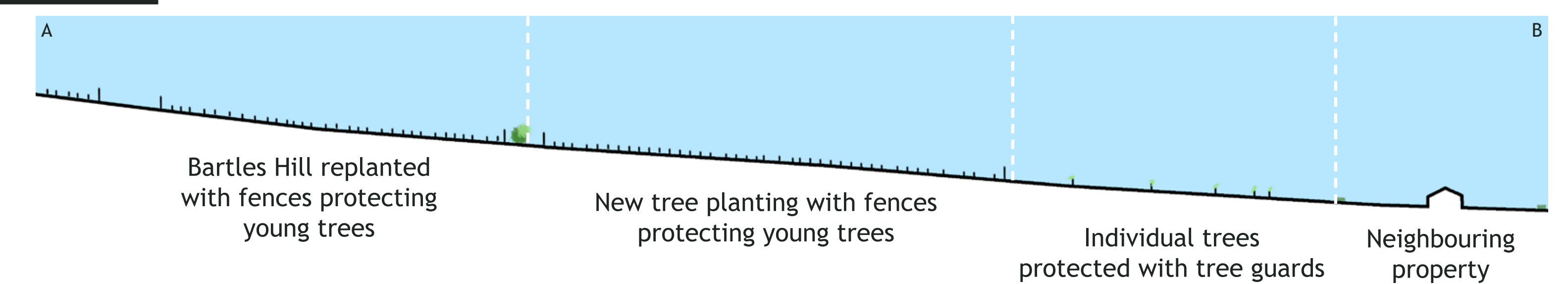
Our initial designs include proposals to:

- Keep open space closest to Sleetbeck, planting fewer trees. In other areas, the open character would change slowly over time.
- Improve the view by planting a mixture of broadleaved trees in the middle distance with mixed conifer beyond on Bartles Hill. This would increase the variety of species and add colour and texture.
- Replace two farm gates to allow people to walk in the new woodland.

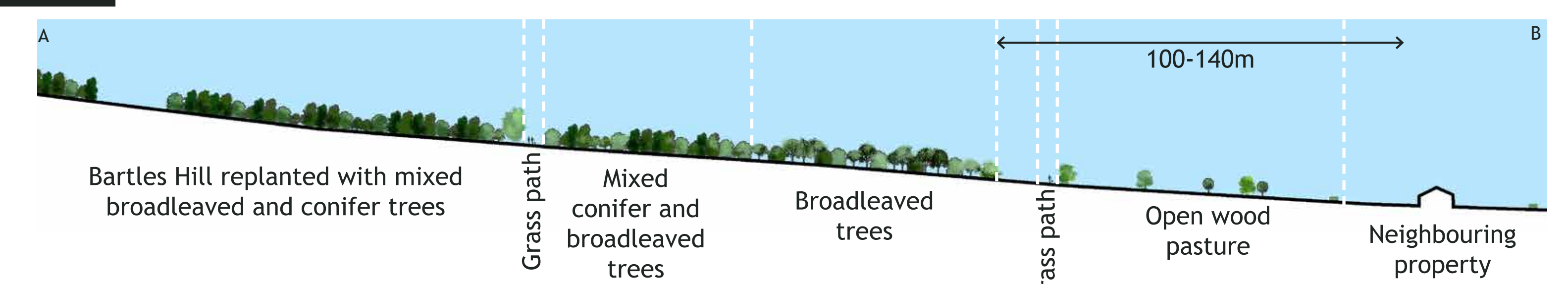
How it looks now from Sleetbeck



How it could look after planting



How it could look in 20 years





When thinking about our initial designs for the new woodland and open space, where it is closest to Sleetbeck (outlined on the plan), please indicate your views next to each item below, using a green, amber or red dot (where green is positive, amber is neither positive or negative, and red is negative):



Planting trees individually



Grouping trees into clusters to encourage a longer life for the trees, shelter from the weather, and food for wildlife



Planting fruit trees



Areas for animals to graze with some tree planting (wood pasture)



Areas of meadow with some tree planting (wood meadow, managed by mowing)



Forestry England



Key

Site boundary	Broadleaved woodland planting
Hedgerow trees	Evenly mixed conifer and broadleaved woodland planting
Ancient semi-natural woodland	Conifer woodland planting with some mixed broadleaves
Ancient replanted woodland	Naturally regenerating broadleaved trees
Watercourses	Wood pasture
Public access gate	Operational forestry access point
Overhead services	Operational forestry access track
5 metre contours	Grass path
Forest roads	

0 0.13 0.26 Kilometres

Your views are important to us - let us know what you think



Forestry England

Your views are important to us - let us know what you think

Responding to this consultation

Please let us have your views by:

- Completing the online feedback form at:
consult.forestryengland.uk/forest-districts/sleetbeck
- Emailing us at
woodland.creation@forestryengland.uk
- All views should be received by 11.59pm on
9th November 2023

What's next ?

- Review of consultation feedback
- Further design work to refine our proposals
- Application to the Forestry Commission for permission to create the new woodland
- Initial planting (Winter 2023)
- Final planting (Winter 2024)

**Scan the QR code
to find out more:**

forestryengland.uk

