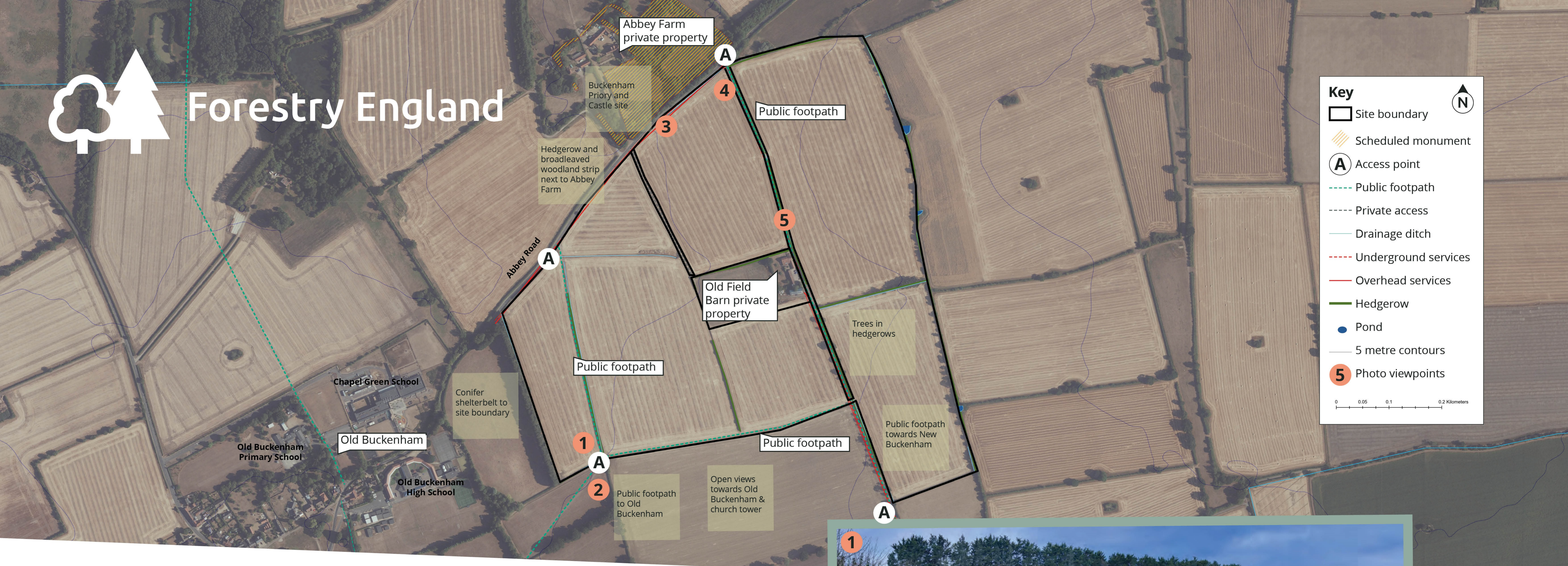




# Forestry England



**Key**

- Site boundary
- Scheduled monument
- Access point
- Public footpath
- Private access
- Drainage ditch
- Underground services
- Overhead services
- Hedgerow
- Pond
- 5 metre contours
- Photo viewpoints

0 0.05 0.1 0.2 Kilometers

## The existing site: land near Old Buckenham

The site near Old Buckenham is mostly arable farmland with large fields, deep ditches, and some hedgerows and individual hedgerow trees. Prominent landscape features include hedgerows, trees, and conifer shelterbelts (planted for shelter and screening) and can be seen from a distance across the landscape. The openness of the area today is due to historical tree and woodland removal for farming. A popular public footpath runs through the site from Old Buckenham, and the site of Buckenham Priory and Castle lies to the north of the site behind a hedgerow and a narrow strip of broadleaved woodland.

1: Wide view west to conifer shelterbelt on site boundary. 2: View northeast from Old Buckenham public footpath looking into site. 3: View northeast with Abbey Farm (site of Old Buckenham Abbey) boundary to the left. 4: Wide view south to west towards Old Buckenham, shelterbelt visible in the background and Abbey Farm (site of Buckenham Priory and Castle) boundary to the right. 5: View south towards Old Field Barn.





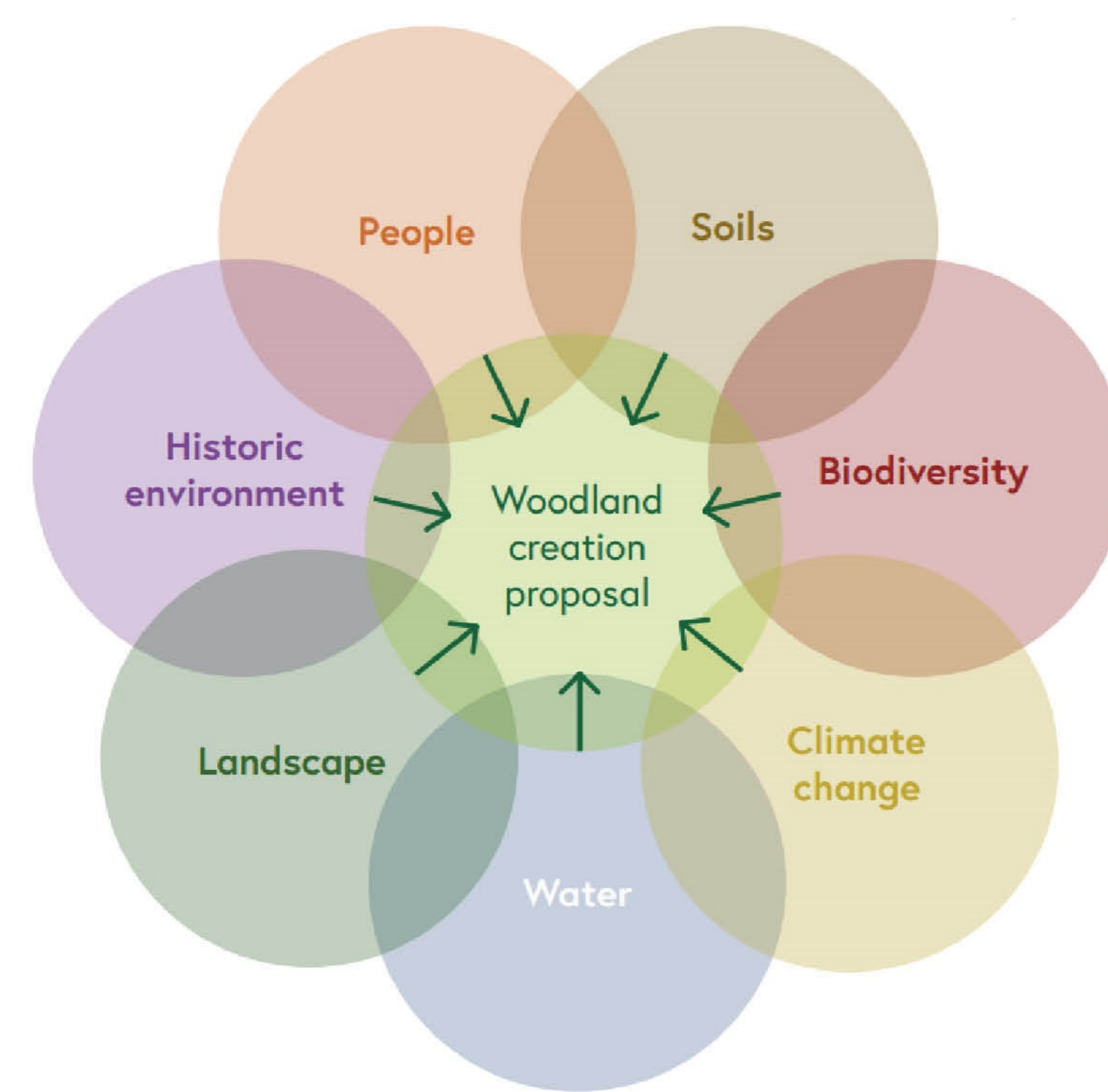
# Forestry England



## How the new woodland near Old Buckenham could look

We are designing the new woodland to benefit people, wildlife, and the surrounding landscape (natural capital approach).

Detailed desktop, site surveys and analysis, as well as feedback from our local communities will guide our design and how the new woodland could look.



### Objectives for the new woodland

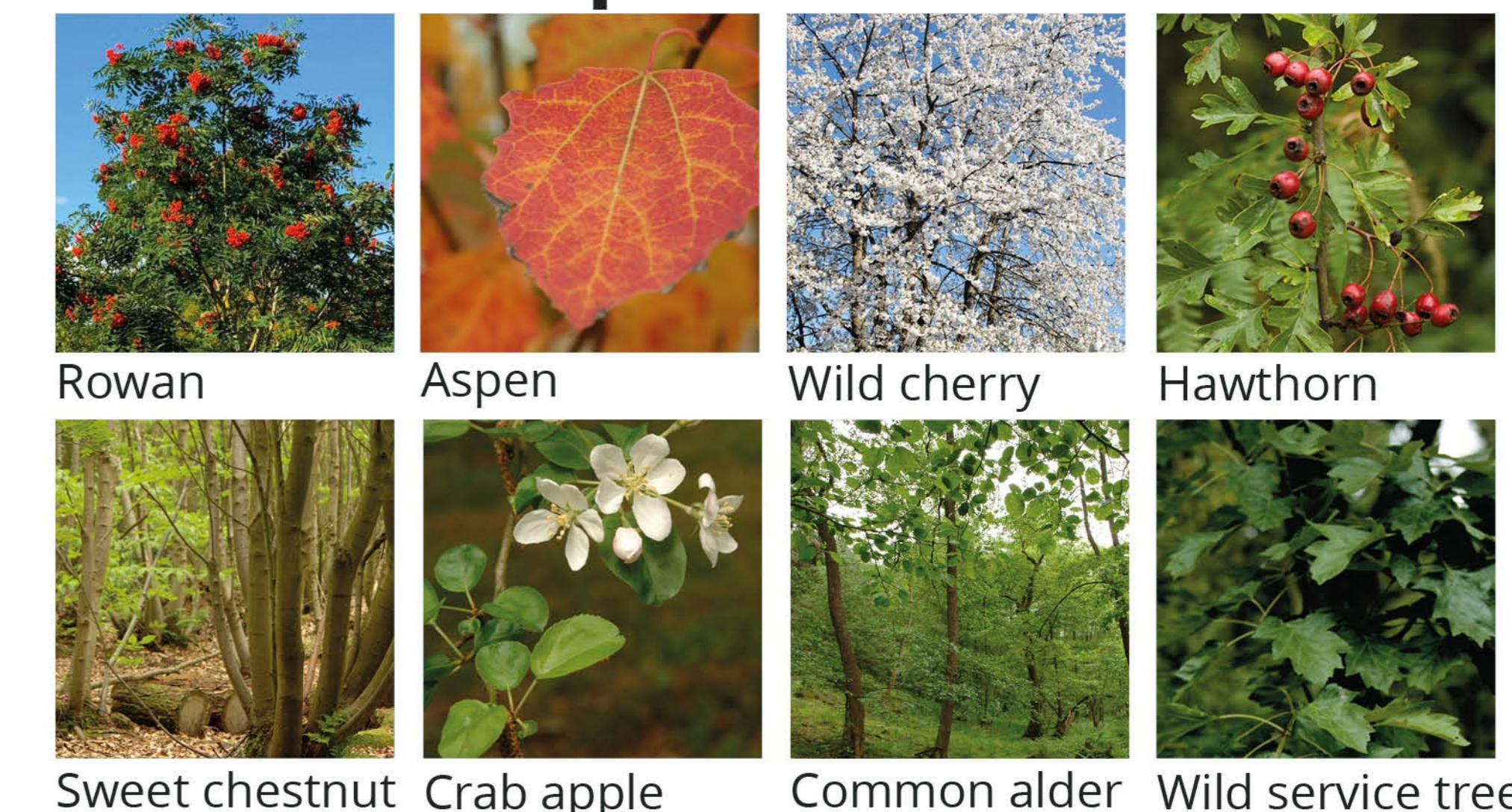
-  **Public access for health and wellbeing:** create low-key public recreation opportunities with new areas for people to walk in the woodland.
-  **Thriving habitats for wildlife:** create a mosaic of habitats, maintaining and enhancing the natural environment.
-  **Benefits for the wider landscape:** capture carbon, supporting net zero emissions targets.
-  **Future forest resources and resilience:** plant a mix of trees for a lasting supply of sustainable timber.
-  **Include research trials:** to better understand how trees produce timber and capture carbon in a changing climate; and to see how different mixes of trees improve biodiversity.

### Types of woodland we could plant



- 1** **Western red cedar** with douglas fir, rowan, wild service tree, alder
- 2** **Macedonian pine** with scots pine, wild cherry, silver birch, rowan, hawthorn
- 3** **Low density pedunculate oak** with hawthorn, crab apple, wild cherry, small leaved lime
- 4** **Red oak and pedunculate oak** with pine, hornbeam, rowan, black walnut

### Additional species







Forestry England



Your views are important to us, let us know what you think about proposals for new woodland near Old Buckenham