



Forestry England

Old Buckenham and Haugh Farm woodlands

Consultation report and
our response to issues
raised

September 2024



Table of Contents

1. Executive summary	4
2. About the Consultation.....	4
2.1 Introduction.....	4
2.2 Purpose	5
2.3 Who we consulted.....	5
2.4 Dates and duration.....	6
2.5 What we asked	6
2.6 Methods of responding	6
2.7 Consultation materials and publicity.....	6
2.7.1 Consultation materials	6
2.7.2 Consultation activity	6
2.7.3 Analysis of consultation responses	7
3. About the responses	8
3.1 Overview of consultation responses.....	8
3.2 Positive comments.....	9
3.3 Negative comments.....	9
3.4 Questions & Suggestions	10
3.5 Feedback from the consultation drop in event	11
4. Summary of stakeholder responses.....	14
5. Our response to issues raised.....	14
Our response to issues raised - Old Buckenham.....	15
Access and public footpaths.....	15
Wildlife and birds	15
Woodland designs	16
Consultation and community engagement	16
Use of agricultural land for woodland	17
Our response to key issues raised - Haugh Farm	17
Woodland maintenance	17
Access and footpaths	17
Traffic and parking	18
Tree species	18
Users of the new woodland.....	18
Views.....	19
Use of agricultural land for woodland	19
Other.....	19

Appendix A: Consultation information	21
Appendix B: Consultation questionnaire	39
A Proposed new woodland	39
Overview	39
Why your views matter	39
Your feedback	39
Your details	40
Appendix C: Code frames.....	41
Appendix D: Letters/emails announcing the launch of the consultation	43
Appendix E: List of stakeholders consulted	49
Appendix F: Stakeholder responses	50

1. Executive summary

Between 22nd July and 11th August 2024, we held a consultation on proposals for the designs of two new woodlands in Norfolk, at Old Buckenham and adjacent to Haugh Farm, New Buckenham. Together, over 160 hectares of new woodland will be created.

We received 21 responses to the Old Buckenham consultation and 18 responses to the Haugh Farm consultation. Whilst we received many broadly supportive comments, some were negative, and others raised questions and made suggestions.

After carefully considering the responses, we are making the following changes and amendments to our proposals for the new woodland as follows:

Old Buckenham:

- We have removed rides/paths away from neighbouring property
- We will connect grass paths to the southern public rights of way
- We will add hedgerow to the neighbouring property boundary

Haugh Farm:

- We have retained the view of New Buckenham Church
- We have changed the species mix to provide an evenly mixed edge on the eastern edge
- We have realigned the public access on the southern boundary, to an existing crossing, to be away from neighbours/business (western site)

Over the coming weeks, we will be finalising our designs to reflect these changes, ahead of submitting an application to the Forestry Commission for regulatory review ahead of planting the new woodland.

This report outlines our approach to the consultation, a summary of the key issues and questions raised, and our response.

2. About the Consultation

2.1 Introduction

Forestry England is creating two new woodlands, totalling over 160 hectares, on two plots of land we have bought at Old Buckenham and adjacent to Haugh Farm, New Buckenham in Norfolk. The land is currently mostly arable with large fields, some hedgerows and individual hedgerow trees. Additional features include several ‘pingo’ ponds at the Haugh Farm site.

These two areas will provide thriving woodlands which will be planted with mixed conifer and broadleaf trees, specially selected to be resilient to future climate conditions. The new woodland will be a ‘Coronation Wood’ to celebrate the Coronation of His Majesty King Charles III.

The woodland will be managed by Forestry England. It will have public access for people to enjoy in every season and expand existing wildlife habitats to provide greater benefits for diversity.

The consultation invited views from the public and other stakeholders on our proposals for the planting and design of both the new woodlands.

Feedback will help shape and inform our final designs which will be submitted to the Forestry Commission for regulatory review ahead of planting the new woodland.

2.2 Purpose

The aims of the consultation were to:

- Provide the public and our stakeholders with sufficient information about our proposals to allow them to give informed responses and suggestions
- Understand the reasons for any issues or concerns about our proposals
- Identify any issues we might not already be aware of
- Provide adequate time for people to respond
- Consider all responses carefully ahead of making any changes to our proposals.

2.3 Who we consulted

Our consultation was open to anyone who lived or worked in the local area or had an interest in our proposals.

We focused our publicity on people living in or visiting Old Buckenham and New Buckenham, businesses in the vicinity of the proposed woodland as well as stakeholders in the local authority including Old Buckenham Parish Council, Banham Parish Council, local Councillors and local MPs, Norfolk Highways and Banham Zoo.

We also told the statutory stakeholders we consult with when creating a new woodland including Natural England.

The list of stakeholders that we contacted is included in **Appendix E**.

2.4 Dates and duration

The consultation was open for three weeks from 22nd July to midnight on the 11th August 2024.

2.5 What we asked

The consultation survey for each woodland, included one open question, inviting written feedback or questions about our proposed plans for the new woodlands.

We also asked respondents to give their name and email address and, where applicable, supply details of the organisation on whose behalf they were responding.

The questionnaire we published on the website, is included in **Appendix B**.

2.6 Methods of responding

Respondents to the consultation were invited to give their views between the 22nd July and 11th August by:

- Completing the questionnaire included on our website at <https://consult.forestryengland.uk/forest-districts/nw-hf-ob>
- Giving comments by email to Woodland.creation@forestryengland.uk
- Leaving comments or suggestions at the public information event on the 31st July 2024 (summarised separately in section 3.5 of this report)

2.7 Consultation materials and publicity

2.7.1 Consultation materials

We published consultation information about the new woodland on our website. This included:

- An overview of the new woodland creation programme and tree planting objectives
- A site appraisal of the existing site - with photographs and maps to give context
- An overview of the surveys undertaken, our objectives and principles, that have informed our design proposals for the new woodland
- An overview of planting types included in the proposals
- Visuals of how the new woodland might look soon after planting and, in the future
- Information on how to respond to the consultation.

2.7.2 Consultation activity

We publicised the consultation in the following ways:

- **Media release:** Distributed to local news outlets

- **Dedicated web page:** on the Forestry England website
- **Letters/emails** to local residents on 22nd July 2024
- **Letters/emails** to stakeholders on 22nd July 2024
- **Posters:** Posters publicising the consultation displayed on public noticeboards and in public areas
- **Consultation drop in event:** We held a drop in event on 31st July 2024, from 4pm to 7pm, at Old Buckenham Village Hall, Abbey Road, Old Buckenham, NR17 1RH

The event showed the information already published on the website on large posters around the venue and Forestry England staff were on hand to talk about the proposals, answer questions or queries, and listen to any concerns from those attending.

Attendees were also encouraged to leave immediate feedback on the comments board and to respond to the consultation formally via the online survey or by email.

We also asked attendees to leave their contact details if they would like to be kept updated about the proposals. More than 60 people attended the event.

2.7.3 Analysis of consultation responses

Responses received to the consultation were analysed by assigning (or coding) the points made by each respondent to one or more codes within a code frame. Codes were organised by theme and separated into positive, negative and questions or suggestions. Each code reflects a point raised by multiple individuals in a variety of ways. From this it was possible to count how many times the same or similar points had been raised by respondents.

3. About the responses

We received a total of 39 responses to the consultation including four from stakeholders (listed in Appendix F). 21 responses were specific to Old Buckenham and 18 responses specific to Haugh Farm. Twenty-eight of the responses were received via the online survey, and 11 responses by email.

3.1 Overview of consultation responses

All responses to the consultation were separated into responses for the two sites, Old Buckenham and Haugh Farm.

Old Buckenham was coded into 29 comments, questions, and suggestions.

Comment	Number
Positive	17
Comment/Suggestion	10
Question	1
Concern	1
Total	29

We have summarised the comments into the following overarching themes:

Issue - Old Buckenham	Mentions
General positive, supportive comments	17
Access and public footpaths	1
Consultation and community engagement	3
Tree species and planting	1
Wildlife and birds	2
Woodland design	1
Woodland maintenance	4

Haugh Farm was coded into 27 comments, questions, and suggestions.

Comment	Number
Positive	9
Comment/Suggestion	7
Question	3
Concern	8
Total	27

We have summarised the comments into the following overarching themes:

Issue - Haugh Farm	Mentions
General positive comments	9
Access and public footpaths	3
Agricultural land for woodland	1
Boundaries and fencing	1
Traffic and parking	5
Tree species	2
Users of the new woodland	1
Views	2
Woodland maintenance	1
Blank	1
Other	2

3.2 Positive comments

There were 26 positive comments for Old Buckenham and Haugh Farm.

These were mostly overarching general comments such as ‘I think that creation of woodland is excellent’, ‘I think it’s really positive’, ‘We look forward to seeing the trees grow’, ‘It’s great to see the woodland proposal and ‘I look forward to seeing both of the projects flourish’.

3.3 Negative comments

There was only one concern regarding Old Buckenham, this was about the loss of wildlife and nesting birds, particularly skylarks.

There were eight negative comments regarding the Haugh Farm proposal, half of these were concerns about parking and the safety of pedestrians accessing the new woodland from a busy, fast, road. Other comments reflected concerns about the use of agricultural land for new woodland creation, users of the new woodland (more specifically users visiting with dogs and dog mess), and a restriction of views.

Haugh Farm - concerns	Mentions
Concerns about parking	2
Concerns about the safety of pedestrians accessing the woodland from a busy road	2
Concern about the use of agricultural land	1
Concern about users of the woodland, especially visiting with dogs, and dog mess	1
Restriction of views	2

3.4 Questions & Suggestions

Old Buckenham - We received one question and ten suggestions about the proposals.

The top themes included:

Access and footpaths

- Work with the local authority to open up public footpaths

Consultation and community engagement

- Interest in volunteering/encourage local engagement and volunteering

Tree planting and species

- Tree species suggestions

Wildlife and birds

- Deer on site

Woodland design

- Has historical research on the site noted any water aspects such as pits and wetlands?

Woodland maintenance

- Maintain current drainage system
- Maintain the wood and coppice unwanted tree growth
- Use appropriate tree guards for trees and shrubs to avoid deer damage

Haugh Farm - We received three questions and seven suggestions about the proposals.

Access and footpaths

- Ensure trees do not encroach public footpaths or present a hazard to highway users
- Authorisation for the installation of gates where deer fencing crosses footpaths
- Ensure that access paths are defined on their correct alignment and maintained to a legal width, contacting the County Council to confirm the extent of the highway

Boundaries and fencing

- Suggestions for management of land boundary

Traffic and parking

- Will traffic calming measures be introduced?

Tree species

- Plant tree species more in keeping with local area

Woodland maintenance

- Will the wood be maintained and will unwanted tree growth be coppiced?

Other

- How many acres is the site? Are there plans to make the woodland larger in the future?
- Timescale for project?

The code frames summarising the comments received to the consultation are included in **Appendix C**.

3.5 Feedback from the consultation drop in event

Over 60 people attended the drop in consultation event on 31st July 2024 at Old Buckenham Village Hall.

The event showed the information already published on the website on large posters around the venue (Image 1) and Forestry England and Forest Research staff were on hand to talk about the proposals, answer questions or queries, and listen to any concerns from those attending.

Attendees were also encouraged to leave immediate feedback on the comments board. There were four written comments on the board and three sticky notes. Attendees were also able to respond to the consultation formally via the online survey or by email.

We also asked attendees to leave their contact details if they would like to be kept updated about the proposals.

Positive comments for Old Buckenham and Haugh Farm:

The overall feedback was positive for both sites. Exit note comments included 'Very excited', 'Very excited, good for the village', five people commented it was 'better than houses'.

Specific areas of concern or comments are summarised as follows for Old Buckenham:

- Community involvement - involvement of local school children in the planting event
- Flooding - ensure that drains and water pathways are kept clear
- Query regarding the land quality grading

Specific areas of concern or comments are summarised as follows for Haugh Farm:

- Public access
- Fire safety
- Hydrology
- Removal of habitat for farmland birds
- Impact on local wildlife
- Parking for cars - local roads are fast and dangerous
- Impact on views from local property

Key discussion topics included:

- Tree species - why are conifers being planted?
- Management - how will forest rides be managed?

Comments from the board reflected some of the comments above:

- Tree species - concern about the proportion of conifer and inclusion of native broadleaves for wildlife?
- Management - possible inclusion of grazing animals in the low-density planting in Haugh Farm meadows?
- Volunteering opportunities?
- Community liaison group?
- Inclusion of black poplar



Image 1. Consultation event layout

4. Summary of stakeholder responses

We received responses from the following stakeholders:

- Countryside Access Officer, South Norfolk and Breckland, Norfolk County Council
- Ward councillor for Guiltcross Ward, Breckland District Council
- Historic England
- RSPB

Their comments have been included in the main consultation responses and focussed on maintenance of the woodland and public rights of way.

We worked with Natural England in the early stage of our proposal.

5. Our response to issues raised

We have considered all the feedback we received to the consultation, and our responses to the key issues raised are set out on the following pages.

We have grouped the issues into broad themes for a more readily understood overview of the issues. Many respondents made positive comments about the proposals, all of which have been noted. For conciseness, these have not been included.

Following further design work and in response to consultation feedback, we have made the following changes to our proposed designs for the new woodland:

Old Buckenham:

- We have removed rides/paths away from neighbouring property
- We have connected grass paths to the southern public right of way
- We will add hedgerow to a neighbouring property boundary

Haugh Farm:

- We have retained the view of New Buckenham Church
- We have changed the species mix to provide an evenly mixed edge on the eastern edge of the site
- We have realigned the public access on the southern boundary, to an existing crossing, to be away from neighbours/business (western site)

Our response to issues raised - Old Buckenham

Access and public footpaths

1.1 Maintain public rights of way on the correct alignment and legal width and gain legal confirmation to extend the public rights of way to sections of the path that cross the highway.

There will be no extension to the public rights of way, however the current rights of way will be maintained.

1.2 Limit the number of structures across public rights of way. If there is a need to install gates where deer fencing crosses footpaths authorisation will be required from Norfolk County Council.

We will not be crossing footpaths with deer fencing, therefore will not need to install gates. We will be fencing compartments (individual woodland blocks surrounded by grass rides) to protect from deer and hare, and the fencing will go around the area of trees. We have designed the fencing so that it doesn't interfere with the public footpaths.

1.3 Work with the local authority to open up the footpaths.

The new woodland will be open to the public, and there will be pedestrian access off the road into the site which will allow the public to explore the woodland by a series of grass paths. There is no plan to include surfaced paths or trails.

Wildlife and birds

2.1 Loss of existing wildlife and nesting birds - particularly skylarks

Forestry England have commissioned a bird survey and can confirm the presence of skylarks. We will be planting outside of the nesting season following standard guidance. The woodland will increase biodiversity, benefitting a wider spectrum of birds. Our draft design includes some open spaces and wider spaced trees to create diverse habitats for wildlife and connect to the surrounding areas.

2.2 Presence of deer in the local area

The UK is home to six species of deer. As their natural predators (bears, lynx and wolves) are no longer present in the UK, our wildlife rangers must manage the deer populations. Without predators or management, deer populations become unnaturally large, and their browsing can damage or kill young trees and wildlife habitats, reducing the resilience of the new woodland to the effects of climate change and lowering the carbon captured from the atmosphere.

We will therefore look at protecting the trees and managing the deer. Forestry England is part of the [Deer Initiative](#)¹, a partnership that promotes sustainable deer management in England and Wales.

Woodland designs

3.1 Has historical research on the site noted any water aspects such as pits and wetlands?

Forestry England have undertaken a range of surveys and collated data to help us understand the land. These have considered ecological and historical aspects. At Old Buckenham, features such as deep ditches have been noted. In addition, in terms of historical context, the local landscape close to Buckenham Priory and Castle will be respected by planting wider spaced broadleaf trees.

3.2 Maintain the wood and coppice unwanted tree growth

We will be maintaining the woodland following the guidance in the [The UK Forestry Standard - GOV.UK \(www.gov.uk\)](#). This is important for tree growth and health. We plan to manage the woodland as “continuous cover” which means only gradually removing individual trees or small groups of trees, leaving the majority of the canopy intact and replacing those felled with new trees. This approach maintains tree cover which benefits the woodland biodiversity.

3.3 Use of appropriate tree guards for shrubs and trees

We will use deer fencing to protect larger blocks of new planting. This will protect the young trees from browsing by deer and rabbits. Tree shelters (a protective tube or casing placed around a young tree) will protect smaller, wide spaced areas of trees. We will follow current advice on height and style of the tree shelters. Deer fencing and tree shelters will be removed and recycled after the trees become fully established.

3.4 Maintain current drainage system

We will maintain existing open drains. Tree establishment will also help to manage water flow by improving soil structure and increasing surface roughness, hence reducing and slowing run-off during times of extreme rainfall.

Consultation and community engagement

4.1 Interest in volunteering and suggestions to encourage local engagement and volunteering with local schools and scout groups etc

Forestry England works with many 'friends of' societies and community groups that help manage our woodlands. We will monitor interest at Old Buckenham as part of our wider engagement plans across the district.

Use of agricultural land for woodland

5.1 Concern that farming land is being used for new woodlands and the impact of this on food production

Forestry England understands concerns around food security and keeping the best land in agricultural production. Our woodland creation programme seeks to avoid the most productive land (grades 1 & 2). The land at Old Buckenham is graded at 3, as per Natural England '[Guide to assessment development proposals on agricultural land](#)' and [Defra Magic Map Application](#).

Timber is a crucial material for the UK's green economy helping a move away from higher-emission materials like steel, concrete, aluminium and bricks. It is renewable, sustainable, and has a lower carbon footprint, making it essential for environmentally friendly construction and manufacturing practices.

Our response to key issues raised - Haugh Farm

Woodland maintenance

1.1 Maintain the woodland and coppice unwanted tree growth

We will be maintaining the woodland following the guidance in the UK Forestry Standard. This is important for tree growth and health. We plan to manage the woodland as "continuous cover" which means only gradually removing individual trees or small groups of trees, leaving the majority of the canopy intact and replacing those felled with new trees. This approach maintains tree cover which benefits the woodland biodiversity.

Access and footpaths

2.1 Maintain public rights of way on the correct alignment and legal width and gain legal confirmation to extend the public rights of way to sections of the path that cross the highway.

There will be no extension to the public rights of way, and the current public rights of way will be maintained. There will be an increase in permissive footpaths which will link into the existing public footpath.

2.2 Authorisation will be required to install gates where deer fencing crosses footpaths

We will not be crossing footpaths with deer fencing, therefore will not need to install gates. We will be fencing compartments (individual woodland blocks surrounded by grass rides) to protect from deer and hare browsing of the saplings. The fencing will go around the area of trees. We have designed the fencing so that it doesn't interfere with the public footpaths.

Traffic and parking

3.1 Concerns about safety for pedestrians accessing the new woodland onto a fast busy road and plans for traffic calming measures?

The new woodlands have been designed for local people to enjoy; both the woodlands can be visited by foot on the existing footpaths.

For the new woodland near Haugh Farm, for the western part of the site we plan to use the existing access on Haugh Road and we will create a new operational access point on the eastern side, also off Haugh Road.

It is not within our remit to add traffic calming measures, however we will look at putting in place mechanisms to warn visitors that they are about to leave the woodland onto a road, and we will work with any relevant organisations/authorities as appropriate. We will be adding an appropriate gate/barrier with additional signage.

3.2 Concerns that the lack of any new parking will lead to parking on the verges that might block gateways and access for agricultural vehicles or create a hazard if parked on the main road.

We have no plans to incorporate parking facilities. While there won't be a designated parking area, all of our woodlands have operational access for maintenance which usually allows for a few cars to park informally. We will monitor the situation and consider signs in appropriate locations to discourage parking if necessary.

Tree species

4.1 Plant tree species more in keeping with the local area and preferably lower and more slow growing.

We propose to plant a range of species at the new woodlands. This would include mixtures of broadleaf (45%) and conifer trees at both sites. We have a total of 24 species. These are examples of the species we plan to plant: Macedonian pine, Scots pine, Douglas fir, Western red cedar, pedunculate oak, red oak, rowan, hornbeam, wild service tree and wild cherry. We will also plant a range of shrubs species such as hazel, hawthorn, blackthorn and guelder rose.

Our professional foresters carefully choose which trees to plant and where to plant them. They understand the soil, how quickly the trees will grow, and the important habitats, species, and geographical features nearby. They also consider tree pests and diseases and future climate conditions to keep woods as healthy as possible.

Users of the new woodland

5.1 Concern about dog walkers leaving dog waste behind.

The new woodlands will be open to the public. Once we have finished creating the woodland we will dedicate it under the Countryside and Rights of Way Act so people can explore the site.

Visitors will be welcome to walk their dogs in the new woodlands, but we won't put a fence around the whole woodland. Dog owners must be responsible and keep their pets under control in all the forests and woodland we care for, following signs and our [Forest Dog Code](#).

Views

6.1 Concern about the impact on views across to New Buckenham church

We have adapted our plans and retained a view through the woodland towards St. Martin's Church, New Buckenham.

Our designs also sensitively consider how close the new woodlands will be to our new neighbours. For example, on the land next to Haugh Farm, properties to the south of the site on Heath Road and Long Lane and to the north on Haugh Road will have views over the new woodland.

We will have open space with wide-spaced shrub and broadleaved tree species to keep the views open and add colour and texture to the woodland planting.

Use of agricultural land for woodland

7.1 Concern that farming land is being used for new woodlands and the impact of this on food production

Forestry England understands concerns around food security and keeping the best land in agricultural production. Our woodland creation programme seeks to avoid the most productive land (grades 1 & 2). The land next to Haugh Farm is graded at 3, as per Natural England 'Guide to assessment development proposals on agricultural land' and Defra Magic Map Application.

Timber is a crucial material for the UK's green economy helping a move away from higher-emission materials like steel, concrete, aluminium and bricks. It is renewable, sustainable, and has a lower carbon footprint, making it essential for environmentally friendly construction and manufacturing practices.

Currently the UK imports over 80% of its timber¹ and we are more reliant on imported timber than imported food (40% of food is imported)².

Other

8.1 How many acres is the site?

The site is 119 hectares in total, which equates to 294 acres.

8.2 What are the timescales for the project?

We plan to plant the new woodlands in winter 2024/25. The Forestry England team and local contractors will carry out crucial maintenance during the first five years of initial

establishment. This is a long-term project and the woodlands will eventually provide a supply of sustainable timber.

8.3 Will there be plans to make the woodland larger in future?

There are no current plans to increase the size of the woodland.

References:

Thedeerinitiative.co.uk

Forestryengland.uk

[Forestry Facts & Figures 2023 - Forest Research](#)

[United Kingdom Food Security Report 2021: Theme 2: UK Food Supply Sources - GOV.UK](#)
(www.gov.uk) (www.gov.uk)

Appendix A: Consultation information

Woodland creation near Old Buckenham and Haugh Farm overview



Forestry England are planting new woodlands to expand the nation's forests we care for

We are planning new woodlands near Old Buckenham and Haugh Farm, near New Buckenham in Norfolk. We would like your comments and feedback on our initial ideas. Your input will help shape our final designs.

Working with public and private landowners, we're choosing the right places for woodlands to grow and flourish, carefully planting a mix of tree species to be resilient in our changing climate.

Every new woodland will have public access so you can explore and enjoy them to support your health and wellbeing.

They will be valuable places for wildlife, often linking other woods to provide green corridors for wildlife to move and thrive across the landscape.

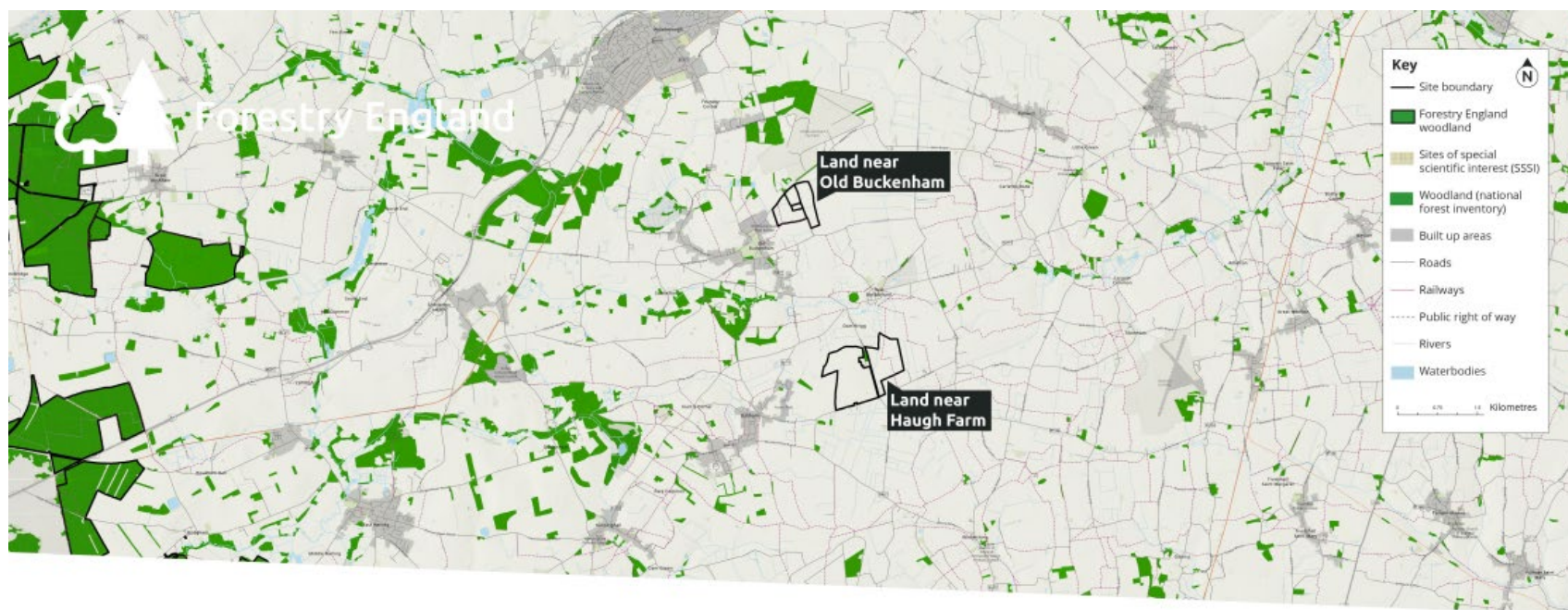
In time, each new woodland will provide sustainable timber, contributing to a green economy. And they'll have wider environmental benefits including absorbing carbon, improving soil health and air quality, and combating flooding.

Forestry England is creating these woodlands through the Nature for Climate Fund.

Scan the QR code to find out more:

forestryengland.uk





Site locations & context

The proposed new woodlands near Old Buckenham and Haugh Farm are in Norfolk close to the villages of Old Buckenham and New Buckenham. The area falls within Natural England's National Character Area (NCA) 83 South Norfolk and High Suffolk Claylands.

This area spans central East Anglia from just below Norwich to the River Gipping in the south. To the west, the landscape becomes the more open and drier Breckland NCA. High Suffolk, is known for its mix of formerly well wooded areas and the open spaces to the east and west. Today, the area is known for its high, mostly flat clay plateau, which shapes the character of the region. The plateau has many small wooded river valleys with complex slopes.

Today, comparatively little remains of the historic wood pasture which characterised this area up until the 18th century, although some important ancient woods like Pulham Market Big Wood SSSI (part of Tyrrels Wood) have survived or been restored. These woods support rich ecosystems, especially where coppicing is maintained. Small woodlands and copses linked by hedgerows with hedgerow trees create notable features in the landscape and give a wooded character around the edges of the open arable plateau. (Natural England, 2013)





Our response to frequently asked questions

The questions and answers below, are responses to some of the themes we are frequently asked about when creating new woodlands:

Public access

The new woodlands will be open to the public. Once we have finished creating the woodland we will dedicate it under the Countryside and Rights of Way Act so people can explore the site.

At Old Buckenham, a public footpath runs through the site from Old Buckenham village. At the land adjacent to Haugh Farm, a public footpath runs through the eastern side of the site from the village of New Buckenham. These existing public rights of way and a network of new unsurfaced grass paths will give access for walkers to enjoy both new woodlands, linking to local villages and the wider countryside. We are not proposing to create new surfaced trails or provide specific infrastructure for horse-riding or cycling.

Our draft designs for the new woodlands include open spaces perfect for peaceful picnics and quiet areas for people to enjoy wildlife and nature.

Once the woodland is established, we would be happy to discuss potential opportunities for educational activities with local organisations and schools.

Visitors will be welcome to walk their dogs in the new woodlands, but we won't put a fence around the whole woodland. Dog owners must be responsible and keep their pets under control in all the forests and woodland we care for, following signs and our Forest Dog Code.

Traffic and parking

The new woodlands have been designed for local people to enjoy; both the woodlands can be visited by foot on the existing footpaths. We will consider signs in appropriate locations to discourage parking if necessary.

To plant and maintain the new woodlands, we plan to create a new access off Abbey Road for Old Buckenham. For the new woodland near Haugh Farm, for the western part of the site we plan to use the existing access on Haugh Road and we will create a new access point on the eastern side, also off Haugh Road.

In 20–25 years' time, when the timber is ready for harvest, we will work with the local highways authority to agree routes for transporting the timber.

Design, landscape and views

We have undertaken ecology surveys to tell us more about the plants, wildlife and ecosystem at both the new woodland sites to help shape our final designs.

For both woodlands, our draft designs will include some open spaces and wider spaced trees to create diverse habitats for wildlife and connect to the surrounding areas. We will maintain the existing hedges and trees within the new woodland to benefit birds and wildlife, in particular Turtle Doves. In addition, ditches will be maintained at both sites for the benefit of aquatic species.

At the new woodland near Haugh Farm we will preserve the locally important, pingo ponds. These ponds were created after the last ice age by melting deposits of left-over glacial ice. They will provide important space for wildlife such as newts and birds and for visitors to enjoy. At Old Buckenham, we will plant wider spaced broadleaf trees, respecting the historic context of the local landscape close to Buckenham Priory and Castle.

Our designs also sensitively consider how close the new woodlands will be to our new neighbours. For example, on the land next to Haugh Farm, properties to the south of the site on Heath Road and Long Lane and to the north on Haugh Road will have views over the new woodland. We will have open space with wide-spaced shrub and broadleaved tree species to keep the views open and add colour and texture to the woodland planting, beyond this we will plant more broadleaved trees because they are shorter than some conifers and live longer.

The trees we will plant

Our professional foresters carefully choose which trees to plant and where to plant them. They understand the soil, how quickly the trees will grow, and the important habitats, species, and geographical features nearby. They also consider tree pests and diseases and future climate conditions to keep woods as healthy as possible.

We propose to plant a range of species at the new woodlands. This would include mixtures of conifer and broadleaf trees at both sites. These might include Macedonian pine, Scots pine, Douglas fir, Western red cedar, pedunculate oak, rowan, hornbeam, wild service tree and wild cherry. We will also plant a range of shrubs species such as hazel, hawthorn, blackthorn and guelder rose.

Establishing and managing the woodland

We plan to plant the new woodlands in winter 2024/25. It will take about five years to become established, The Forestry England team and local contractors will carry out crucial maintenance during this time.

The woodlands will eventually provide a supply of sustainable timber. We plan to manage the woodland as "continuous cover" which means only gradually removing individual trees or small groups of trees, leaving the majority of the canopy intact and replacing those felled with new trees. This approach maintains tree cover which benefits the woodland biodiversity.

What are the research trials you are planning?

Climate change and the increase in tree pests and diseases means we must diversify forests to make them more resilient. One way to do this is by planting a wider variety of tree species in mixtures. We also need to work out which species will thrive in the future.

At land adjacent to Haugh Farm, we are experimenting in small areas of the new woodland with broadleaved species that haven't been widely planted in the UK before, will thrive in a changing climate and produce a sustainable supply of timber for a variety of uses, including manufacturing and building industries.

At Old Buckenham, as part of wider research trials to understand the effect of climate change, site location, and the spacing of trees on future growth and resilience, we will conduct two research trials in small areas of the new woodland.

The first will consider the growth rate and form of English oak trees planted at varied spaces apart. The second, as part of a pan-European research trial, will study how different tree species, combinations of species and single species affect the biodiversity and stability of the forest ecosystem.

Protecting the new woodland from deer

The UK is home to six species of deer. As their natural predators (bears, lynx and wolves) are no longer present in the UK, our wildlife rangers have to manage the deer populations. Without predators or management, deer populations become unnaturally large, and their browsing can damage or kill young trees and wildlife habitats, reducing the resilience of the new woodland to the effects of climate change and lowering the carbon captured from the atmosphere.

Forestry England is part of the Deer Initiative, a partnership that promotes sustainable deer management in England and Wales. We will use deer fencing to protect larger blocks of new planting and tree tubes in smaller areas. Our highly skilled wildlife rangers replace the role of Britain's missing predators by safely and humanely controlling deer populations in our woodlands, working to the highest standards whilst undertaking other vital conservation works to protect and increase the numbers of other threatened species. More information about how Forestry England manage deer can be found on our website.

Deer fencing would be removed and where possible recycled after the trees become established.

Why are you planting agricultural land?

Forestry England is creating new woodlands which will capture carbon, restore and connect habitats, enhance biodiversity, supply sustainable, homegrown timber and be great places for people to enjoy. Sites are individually and carefully assessed so they are suitable for woodland creation and sensitive to the local landscape. Forestry England understands concerns around food security and keeping the best land in agricultural production. Our woodland creation programme seeks to avoid the most productive land (grades 1 & 2). The land at Old Buckenham and next to Haugh Farm is graded at 3.

Timber is a crucial material for the UK's green economy helping a move away from higher-emission materials like steel, concrete, aluminium and bricks. It is renewable, sustainable, and has a lower carbon footprint, making it essential for environmentally friendly construction and manufacturing practices.

Currently the UK imports over 80% of its timber¹ and we are more reliant on imported timber than imported food (40% of food is imported)².

References:

¹ Forestry Facts & Figures 2023 (forestryresearch.gov.uk)

² United Kingdom Food Security Report 2021: Theme 2: UK Food Supply Sources - GOV.UK (www.gov.uk)

Our response to frequently asked questions

The questions and answers below, are responses to some of the themes we are frequently asked about when creating new woodlands.

Public access

The new woodlands will be open to the public. Once we have finished creating the woodland we will dedicate it under the Countryside and Rights of Way Act so people can explore the site.

At Old Buckenham, a public footpath runs through the site from Old Buckenham village. At the land adjacent to Haugh Farm, a public footpath runs through the eastern side of the site from the village of New Buckenham. These existing public rights of way and a network of new unsurfaced grass paths will give access for walkers to enjoy both new woodlands, linking to local villages and the wider countryside. We are not proposing to create new surfaced trails or provide specific infrastructure for horse-riding or cycling.

Our draft designs for the new woodlands include open spaces perfect for peaceful picnics and quiet areas for people to enjoy wildlife and nature.

Once the woodland is established, we would be happy to discuss potential opportunities for educational activities with local organisations and schools.

Visitors will be welcome to walk their dogs in the new woodlands, but we won't put a fence around the whole woodland. Dog owners must be responsible and keep their pets under control in all the forests and woodland we care for, following signs and our [Forest Dog Code](#).

Traffic and parking

The new woodlands have been designed for local people to enjoy; both the woodlands can be visited by foot on the existing footpaths. We will consider signs in appropriate locations to discourage parking if necessary.

To plant and maintain the new woodlands, we plan to create a new access off Abbey Road for Old Buckenham. For the new woodland near Haugh Farm, for the western part of the site we plan to use the existing access on Haugh Road and we will create a new access point on the eastern side, also off Haugh Road.

In 20 -25 years' time, when the timber is ready for harvest, we will work with the local highways authority to agree routes for transporting the timber.

Design, landscape and views

We have undertaken ecology surveys to tell us more about the plants, wildlife and ecosystem at both the new woodland sites to help shape our final designs.

For both woodlands, our draft designs will include some open spaces and wider spaced trees to create diverse habitats for wildlife and connect to the surrounding areas. We will maintain the existing hedges and trees within the new woodland to benefit birds and wildlife, in particular Turtle Doves. In addition, ditches will be maintained at both sites for the benefit of aquatic species.

At the new woodland near Haugh Farm we will preserve the locally important, pingo ponds. These ponds were created after the last ice age by melting deposits of left-over glacial ice. They will provide important space for wildlife such as newts and birds and for visitors to enjoy. At Old Buckenham, we will plant wider spaced broadleaf trees, respecting the historic context of the local landscape close to Buckenham Priory and Castle.

Our designs also sensitively consider how close the new woodlands will be to our new neighbours. For example, on the land next to Haugh Farm, properties to the south of the site on Heath Road and Long Lane and to the north on Haugh Road will have views over the new woodland. We will have open space with wide-spaced shrub and broadleaved tree species to keep the views open and add colour and texture to the woodland planting, beyond this we will plant more broadleaved trees because they are shorter than some conifers and live longer.

The trees we will plant

Our professional foresters carefully choose which trees to plant and where to plant them. They understand the soil, how quickly the trees will grow, and the important habitats, species, and geographical features nearby. They also consider tree pests and diseases and future climate conditions to keep woods as healthy as possible.

We propose to plant a range of species at the new woodlands. This would include mixtures of conifer and broadleaf trees at both sites. These might include Macedonian pine, Scots pine, Douglas fir, Western red cedar, pedunculate oak, rowan, hornbeam, wild service tree and wild cherry. We will also plant a range of shrubs species such as hazel, hawthorn, blackthorn and guelder rose.

Establishing and managing the woodland

We plan to plant the new woodlands in winter 2024/25. It will take about five years to become established. The Forestry England team and local contractors will carry out crucial maintenance during this time.

The woodlands will eventually provide a supply of sustainable timber. We plan to manage the woodland as “continuous cover” which means only gradually removing individual trees or small groups of trees, leaving the majority of the canopy intact and replacing those felled with new trees. This approach maintains tree cover which benefits the woodland biodiversity.

What are the research trials you are planning?

Climate change and the increase in tree pests and diseases means we must diversify forests to make them more resilient. One way to do this is by planting a wider variety of tree species in mixtures. We also need to work out which species will thrive in the future.

At land adjacent to Haugh Farm, we are experimenting in small areas of the new woodland with broadleaved species that haven't been widely planted in the UK before, will thrive in a changing climate and produce a sustainable supply of timber for a variety of uses, including manufacturing and building industries.

At Old Buckenham, as part of wider research trials to understand the effect of climate change, site location, and the spacing of trees on future growth and resilience, we will conduct two research trials in small areas of the new woodland.

The first will consider the growth rate and form of English oak trees planted at varied spaces apart. The second, as part of a pan-European research trial, will study how different tree species, combinations of species and single species affect the biodiversity and stability of the forest ecosystem.

Protecting the new woodland from deer

The UK is home to six species of deer. As their natural predators (bears, lynx and wolves) are no longer present in the UK, our wildlife rangers have to manage the deer populations. Without predators or management, deer populations become unnaturally large, and their browsing can damage or kill young trees and wildlife habitats, reducing the resilience of the new woodland to the effects of climate change and lowering the carbon captured from the atmosphere.

Forestry England is part of the [Deer Initiative](#)¹, a partnership that promotes sustainable deer management in England and Wales. We will use deer fencing to protect larger blocks of new planting and tree tubes in smaller areas. Our highly skilled wildlife rangers replace the role of Britain's missing predators by safely and humanely controlling deer populations in our woodlands, working to the highest standards whilst undertaking other vital conservation works to protect and increase the numbers of other threatened species. More information about how Forestry England manage deer can be found on our [website](#)².

Deer fencing would be removed and where possible recycled after the trees become established.

Why are you planting on agricultural land?

Forestry England is creating new woodlands which will capture carbon, restore and connect habitats, enhance biodiversity, supply sustainable, homegrown timber and be great places for people to enjoy. Sites are individually and carefully assessed so they are suitable for woodland creation and sensitive to the local landscape. Forestry England understands concerns around food security and keeping the best land in agricultural production. Our woodland creation programme seeks to avoid the most productive land (grades 1 & 2). The land at Old Buckenham and next to Haugh Farm is graded at 3.

Timber is a crucial material for the UK's green economy helping a move away from higher-emission materials like steel, concrete, aluminium and bricks. It is renewable, sustainable, and has a lower carbon footprint, making it essential for environmentally friendly construction and manufacturing practices.

Currently the UK imports over 80% of its timber³ and we are more reliant on imported timber than imported food (40% of food is imported)⁴.



Forestry England

Your views are important to us - let us know what you think

Responding to this consultation

Please let us have your views by:

- Completing the online feedback form at: consult.forestryengland.uk/forest-districts/nw-hf-ob
- Emailing us at woodland.creation@forestryengland.uk
- All views should be received by 11.59pm on Sunday 11th August 2024

What's next ?

- Review of consultation feedback
- Further design work to refine our proposals
- Application to the Forestry Commission for permission to create the new woodland
- Planting (Winter 2024/25)

Scan the QR code
to find out more:

forestryengland.uk



Our proposals on land near Haugh Farm



The existing site: land near Haugh Farm

The site near Haugh Farm is mostly arable farmland with large fields, some hedgerows and individual hedgerow trees. There are several 'pingo' ponds formed by melting glacial water, leaving water-filled holes. Some ponds have been ploughed out, but those remaining are surrounded by naturally growing trees. Trees, hedges and small woodland blocks including conifers, are visible from a distance and are key landscape features. The open landscape today is due to historical tree and woodland removal for farming. A public footpath runs through the eastern side of the site from New Buckenham.

1: Wide view south over site, with hedgerow trees at field entrance. 2: View north from Heath Road into site with 'pingo' pond and naturally growing trees on the left. 3: Looking south into smaller field with wetter ground. 4: View of 'pingo' pond and naturally growing trees surrounding. 5: Wide view south to west across arable farmland in the site.

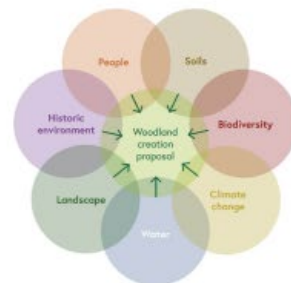




How the new woodland near Haugh Farm could look

We are designing the new woodland to benefit people, wildlife, and the surrounding landscape (natural capital approach).

Detailed desktop, site surveys and analysis, as well as feedback from our local communities will guide our design and how the new woodland could look.



Objectives for the new woodland

-  **Public access for health and wellbeing:** create low-key public recreation opportunities with new areas for people to walk in the woodland.
-  **Thriving habitats for wildlife:** create a mosaic of habitats, maintaining and enhancing the natural environment.
-  **Benefits for the wider landscape:** capture carbon, supporting net zero emissions targets.
-  **Future forest resources and resilience:** plant a mix of trees for a lasting supply of sustainable timber.
-  **Include research trials:** to test which less common broad-leaved tree species might be suitable for a future supply of sustainable timber.

Types of woodland we could plant



- 1** **Macedonian pine** with pedunculate oak, red oak, rowan, wild service tree
- 2** **Pedunculate oak** with hornbeam, wild service tree, small leaved lime
- 3** **Rowan**, wild cherry, hawthorn, guelder rose, wild service tree
- 4** **Douglas fir** with small-leaved lime, sweet chestnut, black walnut

Additional species



- Sweet chestnut
- Scots pine
- Common alder
- Coast redwood
- Cricket bat willow
- Hawthorn
- Wild cherry
- Wild service tree



How the new woodlands could look

Our initial designs include proposals to:

- Keep some open views from properties next to the woodlands by sparsely planting a mix of native shrubs and trees that will also provide seasonal interest.
- Create a number of circular footpath routes through the woodlands following open grass paths, connecting to the existing public footpaths, which link to Old Buckenham and New Buckenham.
- Plant coniferous and broadleaved trees together in mixtures, with shrub species along edges to increase the variety of species and add colour and texture.
- Create wildlife corridors by leaving open space next to hedgerows and adding shrubby borders at the edges of woodland for wildlife to thrive.
- At Haugh Farm, retain 'pingo' ponds and sites of former 'pingo' ponds, with open space and low density planting located nearby, creating a mosaic of different habitats.
- Respect the setting of Buckenham Priory and Castle, with oak trees and native shrubs planted at low density along the boundary, reflecting planting found locally.

Land near Haugh Farm public footpath view: how it looks now



How it could look after planting



How it could look in 20 years



Land near Old Buckenham public footpath view: how it looks now



How it could look after planting



How it could look in 20 years





Forestry England



Your views are important to us, let us know what you think about proposals for new woodland near Haugh Farm

Our proposals on land near Old Buckenham



The existing site: land near Old Buckenham

The site near Old Buckenham is mostly arable farmland with large fields, deep ditches, and some hedgerows and individual hedgerow trees. Prominent landscape features include hedgerows, trees, and conifer shelterbelts (planted for shelter and screening) and can be seen from a distance across the landscape. The openness of the area today is due to historical tree and woodland removal for farming. A popular public footpath runs through the site from Old Buckenham, and the site of Buckenham Priory and Castle lies to the north of the site behind a hedgerow and a narrow strip of broadleaved woodland.

1: Wide view west to conifer shelterbelt on site boundary. 2: View northeast from Old Buckenham public footpath looking into site. 3: View northeast with Abbey Farm (site of Old Buckenham Abbey) boundary to the left. 4: Wide view south to west towards Old Buckenham, shelterbelt visible in the background and Abbey Farm (site of Buckenham Priory and Castle) boundary to the right. 5: View south towards Old Field Barn.

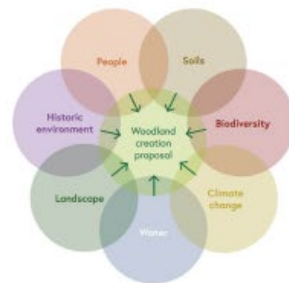




How the new woodland near Old Buckenham could look

We are designing the new woodland to benefit people, wildlife, and the surrounding landscape (natural capital approach).

Detailed desktop, site surveys and analysis, as well as feedback from our local communities will guide our design and how the new woodland could look.



Objectives for the new woodland

- Public access for health and wellbeing:** create low-key public recreation opportunities with new areas for people to walk in the woodland.
- Thriving habitats for wildlife:** create a mosaic of habitats, maintaining and enhancing the natural environment.
- Benefits for the wider landscape:** capture carbon, supporting net zero emissions targets.
- Future forest resources and resilience:** plant a mix of trees for a lasting supply of sustainable timber.
- Include research trials:** to better understand how trees produce timber and capture carbon in a changing climate; and to see how different mixes of trees improve biodiversity.

Types of woodland we could plant



- 1 Western red cedar** with douglas fir, rowan, wild service tree, alder
- 2 Macedonian pine** with scots pine, wild cherry, silver birch, rowan, hawthorn
- 3 Low density pedunculate oak** with hawthorn, crab apple, wild cherry, small leaved lime
- 4 Red oak and pedunculate oak** with pine, hornbeam, rowan, black walnut

Additional species



Sweet chestnut | Crab apple | Common alder | Wild service tree



How the new woodlands could look

Our initial designs include proposals to:

- Keep some open views from properties next to the woodlands by sparsely planting a mix of native shrubs and trees that will also provide seasonal interest.
- Create a number of circular footpath routes through the woodlands following open grass paths, connecting to the existing public footpaths, which link to Old Buckenham and New Buckenham.
- Plant coniferous and broadleaved trees together in mixtures, with shrub species along edges to increase the variety of species and add colour and texture.
- Create wildlife corridors by leaving open space next to hedgerows and adding shrubby borders at the edges of woodland for wildlife to thrive.
- At Haugh Farm, retain 'Pingo' ponds and sites of former 'pingo' ponds, with open space and low density planting located nearby, creating a mosaic of different habitats.
- Respect the setting of Buckenham Priory and Castle, with oak trees and native shrubs planted at low density along the boundary, reflecting planting found locally.

Land near Haugh farm public footpath view: how it looks now



How it could look after planting



How it could look in 20 years



Land near Old Buckenham public footpath view: how it looks now



How it could look after planting



How it could look in 20 years





Forestry England



Your views are important to us, let us know what you think about proposals for new woodland near Old Buckenham



Forestry England



Your views on new woodlands

Public Consultation Event for new woodlands near Old Buckenham and Haugh Farm

31st July 4-7pm - Old Buckenham Village Hall,
Abbey Rd, Old Buckenham, NR17 1RH

Please drop in at any time during this period, to view the
proposed design and speak to a member of our team.

For more information and to provide feedback visit
<https://consult.forestryengland.uk/forest-districts/nw-hf-ob>



You can also contact us at:
woodland.creation@forestryengland.uk



forestryengland.uk

[New woodlands at Old Buckenham and Haugh Farm | Forestry England](#)



New woodlands at Old Buckenham and Haugh Farm



Forestry England are creating two new woodlands in Norfolk. The new woodlands at Old Buckenham and on land adjacent to Haugh Farm are close to the villages of Old Buckenham and New Buckenham. Together, over 160 hectares of new woodland will be created in this part of Norfolk. The new woodlands will have public access for people to explore and enjoy and to support health and wellbeing. The new woods will be [Coronation Woods](#), commemorating the Coronation of His Majesty King Charles III.



Work in progress at Old Buckenham and Haugh Farm

The new woodlands will be valuable places for timber, wildlife and local communities. Both woodlands will be planted with a mixture of broadleaf and conifer tree species, chosen to match local soil types and expected future climate conditions.

The new woodlands will be peaceful places for local people to enjoy and will link in with the existing public rights of way network.

We are creating detailed plans for these new woodlands. They will both be an important part of the work that Forestry England is doing to expand the nation's forests and will be created through the Nature for Climate Fund.

Old Buckenham and Haugh Farm public consultation

We invite you to comment on our draft design proposals for the new woodlands. You can comment online until Sunday 11 August.

We will also be holding a public drop-in event in August - find out more on our [consultation page](#).

For any further queries please contact us by emailing woodland.creation@forestryengland.uk

[View the plans](#) »

Appendix B: Consultation questionnaire

A Proposed new woodland

Overview

Forestry England would like to share with you draft plans for the proposed new woodland at Haugh Farm.

Why your views matter

Your feedback, as well as site surveys, has helped shape proposals showing how the new woodland could look. Forestry England value your comments and feedback on the proposal and welcome you to our consultation event.

Which of the 2 sites are your comments referencing?

Your feedback

1. Please use this space to add feedback on the proposed plans

Should you wish to provide further comments, please continue on a speperate sheet of paper with your name clearly marked at the top and attach it to this response

2. Are you responding as:
Please select all that apply

- A local resident
- A local business
- A political representative

Other: please describe:

Your details

You can submit information without completing the address, postcode, and email details, but if you choose to do so they will be held by Forestry England as per our privacy policy [Privacy Policy | Forestry England](#).

1. What is your address?

2. What is your postcode?

3. What is your email address?

Appendix C: Code frames

Old Buckenham

Theme	Total mentions
Access and public footpaths	
Work with the local authority to open up the public footpaths	1
Consultation and community engagement	
Interest in volunteering/encourage local engagement and volunteering	3
General positive, supportive comments	
General positive	17
Tree planting and species	
Tree species suggestions	1
Wildlife and birds	
Deer on site	1
Loss of existing wildlife and nesting birds - particularly Skylarks	1
Woodland design	
Has historical research on the site noted any water aspects such as pits and wetlands?	1
Woodland maintenance	
Maintain current drainage system	1
Maintain the wood and coppice unwanted tree growth	1
Use appropriate guards for shrubs	2

Haugh Farm

Theme	Total mentions
Access and footpaths	
Ensure trees do not encroach public footpaths or present a hazard to highway users	1
Installation of gates where deer fencing crosses footpaths will require authorisation	1
Maintain public rights of way on the correct alignment and legal width apply for confirmation of the extend the highway for the sections of each path that crosses the highway	1
Agricultural land for woodland	
Use of agricultural land for new woodland	1
Boundaries and fencing	
Suggestions for management of land boundary	1

General positive comments	
General positive	9
Other	
How many acres is the site	1
Plans to make the woodland larger in the future	0
Timescale for project	1
Traffic and parking	
Parking concerns	2
Safety for pedestrians accessing the new woodland from/onto a fast busy road	2
Traffic calming measure	1
Tree species	
Plant tree species more in keeping with local area	2
Users of the new woodland	
Dogs and dog mess	1
Views	
Views	2
Woodland maintenance	
Maintain the wood and coppice unwanted tree growth	1

Appendix D: Letters/emails announcing the launch of the consultation

From: Woodland Creation <woodland.creation@forestryengland.uk>
Sent: 22 July 2024 11:31
To: [REDACTED]
Subject: Public consultation: New woodlands near Old Buckenham and New Buckenham
Attachments: New woodlands - Old Buckenham and New Buckenham.pdf; Norfolk consultation event poster.pdf

Dear Old Buckenham Parish Council

Public consultation on draft design proposals for new woodlands on land near Old Buckenham.

I am contacting you about the launch of a public consultation on our draft design proposals for new woodlands in Norfolk, near Old Buckenham and New Buckenham. The woodland near Old Buckenham is within the Old Buckenham Parish boundary.

I attach a copy of the letter we have sent via Royal Mail to addresses near to the new woodlands. I also attach a poster promoting the consultation and the local drop in event. We'd be most grateful if you could post this on your Parish Council noticeboards, website and social media channels.

The proposals are available to view and comment upon [here](https://consult.forestryengland.uk/forest-districts/nw-hf-ob) until midnight on the Sunday 11th August - <https://consult.forestryengland.uk/forest-districts/nw-hf-ob>

While we continue with our detailed planning for the woodlands, we are keen to hear your views on our initial design proposals. These have been informed by site surveys as well as the valuable insights gained from you and other local people earlier this year. The new woodlands will be a valuable place for timber production, wildlife, and people. It will have public access so you will be able to explore and enjoy it to support your health and wellbeing.

Public drop-in events

As part of the consultation, we will also be holding a drop-in event where you can view our proposed designs and talk to members of the Woodland Creation project team:

Date: Wednesday 31st July 2024 **Time:** 4pm - 7pm **Location:** Old Buckenham Village Hall, Abbey Road, Old Buckenham, NR17 1RH

The new woodlands will be one of many that Forestry England is planting and will form part of wider plans to increase tree planting across the UK.

Kind regards

The Woodland Creation Team

Responding to the consultation

The consultation will be open from Monday 22nd July to Sunday 11th August.

Online: We encourage you submit your response online. You can view our plans and submit your views here:

<https://consult.forestryengland.uk/forest-districts/nw-hf-ob>

If you are unable to do this, you can respond via email, typing 'Old Buckenham and Haugh Farm consultation response' in the header of your email and including your name, address, and postcode in your response.

Next steps

The consultation will close on Sunday 11th August 2024. All responses will be summarised and included in a consultation report along with our response to the key issues raised and published on our website. Consultation feedback and further surveys will help shape the final design proposal we will submit to the Forestry Commission for regulatory review ahead of planting the new woodland.

The Woodland Creation Team
Forestry England

Email: woodland.creation@forestryengland.uk
www.forestryengland.uk

From: Woodland Creation <woodland.creation@forestryengland.uk>
Sent: 22 July 2024 11:31
To: [REDACTED]
Subject: Haugh Woods and Old Buckenham [REDACTED]
Attachments: New woodlands - Old Buckenham and New Buckenham.pdf; Norfolk consultation event poster.pdf

Dear Banham Parish Council,

Public consultation on draft design proposals for new woodlands on land near Haugh Farm, New Buckenham.

I am contacting you about the launch of a public consultation on our draft design proposals for the new woodland.

These are available to view and comment upon [here](https://consult.forestryengland.uk/forest-districts/nw-hf-ob) until midnight on the Sunday 11th August - <https://consult.forestryengland.uk/forest-districts/nw-hf-ob>

While we continue with our detailed planning for the woodlands, we are keen to hear your views on our initial design proposals.

These have been informed by site surveys as well as the valuable insights gained from you and other local people earlier this year.

The new woodlands will be a valuable place for timber production, wildlife, and people. It will have public access so you will be able to explore and enjoy it to support your health and wellbeing.

Public drop-in events

As part of the consultation, we will also be holding a drop-in event where you can view our proposed designs and talk to members of the Woodland Creation project team:

Date: Wednesday 31st July 2024 **Time:** 4pm - 7pm **Location:** Old Buckenham Village Hall, Abbey Road, Old Buckenham, NR17 1RH

The new woodlands will be one of many that Forestry England is planting and will form part of wider plans to increase tree planting across the UK.

I attach a copy of the letter we have sent via Royal Mail to addresses near to the new woodlands. I also attach a poster promoting the consultation and the local drop in event. We'd be most grateful if you could post this on your Parish Council noticeboards, website and social media channels

Kind regards

The Woodland Creation Team

Responding to the consultation

The consultation will be open from Monday 22nd July to Sunday 11th August.

Online: We encourage you submit your response online. You can view our plans and submit your views here:

<https://consult.forestryengland.uk/forest-districts/nw-hf-ob>

If you are unable to do this, you can respond via email, typing 'Old Buckenham and Haugh Farm consultation response' in the header of your email and including your name, address, and postcode in your response.

Next steps

The consultation will close on Sunday 11th August 2024. All responses will be summarised and included in a consultation report along with our response to the key issues raised and published on our website. Consultation feedback and further surveys will help shape the final design proposal we will submit to the Forestry Commission for regulatory review ahead of planting the new woodland.

The Woodland Creation Team
Forestry England

Email: woodland.creation@forestryengland.uk
www.forestryengland.uk

From: Woodland Creation <woodland.creation@forestryengland.uk>
Sent: 22 July 2024 11:49
To: [REDACTED]
Subject: Public consultation on draft proposals for new woodlands near Old Buckenham and New Buckenham

Dear neighbour

Public consultation on draft design proposals for new woodlands near Old Buckenham and land near Haugh Farm, (grid reference) New Buckenham.

I'm writing to let you know about our public consultation on proposals for a new woodlands near Old Buckenham and land near Haugh Farm, New Buckenham.

These are available to view and comment upon [here](https://consult.forestryengland.uk/forest-districts/nw-hf-ob) until midnight on Sunday 11th August 2024 - <https://consult.forestryengland.uk/forest-districts/nw-hf-ob>

While we continue with our detailed planning for the woodlands we would like to hear your views on our initial design proposals. These have been informed by site surveys as well as the valuable insights gained from you and other local people earlier this year. The new woodlands will be a valuable place for timber production, wildlife, and people. It will have public access so you will be able to explore and enjoy it to support your health and wellbeing.

As a close neighbour, your views are important to us.

Public drop-in events

As part of the consultation, we will also be holding a drop-in event where you can view our proposed designs and talk to members of the Woodland Creation project team:
Date: Wednesday 31st July 2024 **Time:** 4pm - 7pm **Location:** Old Buckenham Village Hall, Abbey Road, Old Buckenham, NR17 1RH

The new woodlands will be one of many that Forestry England is planting and will form part of wider plans to increase tree planting across the UK.

Kind regards

The Woodland Creation Team

Responding to the consultation

The consultation will be open from Monday 22nd July 2024 to Sunday 11th August 2024.
Online: We encourage you submit your response online. You can view our plans and submit your views here:
<https://consult.forestryengland.uk/forest-districts/nw-hf-ob>

If you are unable to do this, you can respond via email, typing 'Old Buckenham and Haugh Farm consultation response' in the header of your email and including your name, address, and postcode in your response.

Next steps

The consultation will close on Sunday 11th August 2024. All responses will be summarised and included in a consultation report along with our response to the key issues raised and published on our website. Consultation feedback and further surveys will help shape the final design proposal we will submit to the Forestry Commission for regulatory review ahead of planting the new woodland.

The Woodland Creation Team
Forestry England

Email: woodland.creation@forestryengland.uk
www.forestryengland.uk

Appendix E: List of stakeholders consulted

Letters/emails were sent to the following stakeholders:

Stakeholder
Direct neighbours and businesses
Banham Parish Council
Banham Zoo
Breckland District Council
British Trust for Ornithology
Butterfly Conservation
Environment Agency
Friends of Thetford Forest
Historic England
Mid Norfolk Constituency
Natural England
Norfolk County Council (ProW, Heritage, Highways)
Norfolk Wildlife Trust
Old Buckenham Country Park
Old Buckenham Parish Council
RSPB
Utilities (various)

Appendix F: Stakeholder responses

We received consultation responses from the stakeholder listed below:

- Countryside Access Officer, South Norfolk and Breckland, Norfolk County Council
- Ward councillor for Guiltcross Ward, Breckland District Council
- Historic England
- RSPB

In addition, we received consultation responses from Natural England at an early stage in the consultation process.