



Forestry England

North Carlton

Consultation report and our response to issues raised

May 2025



Contents

1. Executive summary	4
2. About the Consultation.....	4
2.1 Introduction.....	4
2.2 Objectives for the new woodland	5
2.3 Consultation purpose	5
2.4 Early Engagement	5
2.5 How our consultation designs were informed by feedback to early engagement.....	6
2.6 Public consultation - who we consulted	7
2.7 Dates and duration.....	7
2.8 What we asked.....	7
2.9 Methods of responding.....	7
2.10 Consultation materials and publicity.....	8
2.10.1 Consultation Materials	8
2.10.2 Consultation activity	8
2.10.3 Analysis of consultation responses	9
3. About the responses	10
3.1 Overview of consultation responses.....	10
3.2 Consultation responses by theme	11
3.3 Positive comments	11
3.4 Negative comments/concerns	12
3.5 Comments, suggestions and questions.....	13
3.6 Feedback from the consultation drop in event	15
3.7 Summary of stakeholder responses	16
4. Our response to issues raised	17
North Carlton - our responses to issues raised	18
1.0 Archaeology	18
2.0 Parking and access	18
3.0 Paths and trails	20
4.0 Tree planting and species.....	21
5.0 Wildlife and birds	21
6.0 Woodland design	22
7.0 Woodland facilities.....	23

8.0	Woodland maintenance	23
9.0	Other	25
Appendix A: A new woodland at North Carlton - our response to key themes from early engagement.....		26
Appendix B: Consultation information		
	Exhibition boards - can be viewed below or on our website by clicking here	30
Appendix C: Consultation questionnaire		40
Appendix D: Emails/letters announcing the launch of consultation.....		42
Appendix E: Code frame (consultation responses)		45
Appendix F: Stakeholders		48

1. Executive summary

Between 10th March and 6th April 2025, we held a public consultation on proposals for the designs of a new 295 hectare woodland at North Carlton.

We received 51 responses to the consultation which included 104 comments. Whilst we received many broadly supportive comments, some were negative, and others raised questions and made suggestions.

Our designs presented during the consultation were shaped by the initial feedback received during early engagement, as well as by further survey work. As a result, they already incorporated several suggestions, including the provision of open space and grassland, the planting of fruiting trees and the inclusion of new or upgraded tracks and barriers to discourage unauthorised access and antisocial behaviour.

Following a careful review of the public consultation responses, we will:

- Ensure open spaces are retained around the Roman road and the setting of the Scampton villa.
- Monitor reports of inappropriate parking by visitors to the new woodland. Should this issue become more significant, we will reassess our current approach.
- We are reviewing the use of the barrier at the entrance to the new woodland off Church Lane to limit vehicle access to the site and give consideration for turning for Church Lane residents and refuse collection vehicles.
- Exclude sycamore trees from planting close to the horse paddocks.
- Designate specific vehicle routes and access points for Forestry England staff and contractors from local roads to minimise disturbance within the village.

Over the coming weeks, we will be finalising our designs, ahead of applying to the Forestry Commission for regulatory review ahead of planting the new woodland.

This report outlines our approach to the consultation, a summary of the key issues and questions raised, and our response.

2. About the Consultation

2.1 Introduction

Forestry England is creating a new 295 hectare woodland on land we have bought at North Carlton. The land, which is currently former agricultural land, has been bought by Forestry England to provide a thriving woodland which will be planted with mixed conifer and broadleaf trees, specially selected to be resilient to future climate conditions.

The new woodland will be open to the public for people to explore and enjoy, whilst also being a valuable place for wildlife and producing sustainable timber for a greener economy.

The consultation invited views from the public and stakeholders on our proposals for the planting and design of the new woodland.

Feedback will help shape and inform our final designs which will be submitted to the Forestry Commission for regulatory review ahead of planting the new woodland.

2.2 Objectives for the new woodland

Our objectives for the new woodland are to:

- **Create a mixed resilient woodland:** plant a mix of trees to create species and structural diversity and to produce a lasting supply of certified sustainable timber.
- **Increase opportunities for enhancing biodiversity:** retain hedges, plant native shrubs and create open spaces within the woodland for wildlife to thrive.
- **Protect and enhance historic environment features:** leave open areas where historic features are present, incorporate views and reflect historic Great Park in woodland design.
- **Sequester atmospheric carbon:** help meet government net zero emissions goals by planting and managing woodland that will thrive in future climates and store carbon.
- **Public access for health and wellbeing:** provide low-key recreation opportunities by improving access to the countryside for local residents and visitors.

2.3 Consultation purpose

The aims of the consultation were to:

- Provide the public and our stakeholders with sufficient information about our proposals to allow them to give informed responses and suggestions
- Understand the reasons for any issues or concerns about our proposals
- Identify any issues we might not already be aware of
- Provide adequate time for people to respond
- Consider all responses carefully ahead of making any changes to our proposals

2.4 Early Engagement

Between 26 November 2024 and 17 December 2024, we sent letters to 589 addresses within a 1.5km boundary of the proposed new woodland at North

Carlton. We also wrote to ward members at Lincolnshire County Council and West Lindsey District Council, as well as North Carlton Parish Council and Scampton Parish Council advising them of the early engagement.

The letter included a map of the new woodland area and asked locals to share their thoughts through an online survey about what we should consider as we develop our woodland designs.

We received 74 responses from residents and Scampton Parish Council and an acknowledgement from North Carlton Parish Council.

We also engaged with the Environment Agency and Natural England early in our design process.

2.5 How our consultation designs were informed by feedback to early engagement

Feedback to our early engagement included general positive comments, as well as questions and concerns around the following themes:

- **Paths and access to the new woodland** - suggestions to create a well-connected, accessible network of wide, shared-use trails and footpaths—including fitness trails, bridleways, and wheelchair-accessible routes—while restricting vehicle access and preserving existing paths.
- **Traffic and parking** - concern about an increase in cars to the area and suggestions to include parking.
- **Woodland design** - suggestions focused on enhancing the woodland with natural elements like native trees, wildflowers, orchards, and open grassland, as well as quiet spaces such as a pond and seating with scenic views.
- **Communication and community involvement** - suggestions for community engagement, volunteering and community tree planting opportunities and collaboration with the Lincolnshire Wildlife Trust. The inclusion of educational and waymarked signage and on-site consultation, as well as the inclusion of educational signage and waymarked trails.
- **Tree species and planting** - suggestions emphasised planting a diverse mix of native and deciduous trees, with specific mentions of tree species such as oak, cedar, chestnut and copper beech. They also suggested incorporating fast-growing species, rare or at-risk trees and prioritising indigenous hardwoods.
- **Wildlife and birds** - suggestions included the reintroduction of beavers, providing habitats such as nesting boxes and controlled access of visitors to some areas of the woodland during breeding season.

- **Woodland amenities** - concern that the inclusion of woodland amenities would attract crowds to the new woodland, while others suggested the inclusion of amenities such as a children's play trail, a mobile food/drink van, wild camping and picnic tables.
- **Dogs** - concern about dog fouling and a suggestion for a fenced dog area.
- **Anti-social behaviour** - concern about litter and vandalism and anti-social behaviour around car parks.
- **Fencing and deer management** - questions about woodland and deer management.
- **Water and drainage** - questions about maintenance of the dykes and plans for drainage.
- **Use of agricultural land** - concern about the use of agricultural land for new woodland and the impact on food security.

Appendix A sets out how this, along with further design and survey work and engagement with other stakeholders, such as Natural England, Historic England and the Environment Agency, has helped to shape the design proposals we presented during the March 2025 consultation.

2.6 Public consultation - who we consulted

Our consultation was open to anyone who lived or worked in the local area or had an interest in our proposals. We focused our publicity on people living in the local area, as well as stakeholders from Lincolnshire County Council and West Lindsey District Council. We also told the statutory stakeholders we consult with when creating a new woodland. The list of stakeholders is included in **Appendix F**.

2.7 Dates and duration

The consultation was open for four weeks from 10th March to midnight on the 6th April 2025.

2.8 What we asked

The consultation survey included one open question inviting written feedback or questions about our proposed plans for the new woodland.

We also asked respondents to give their name and email address and, where applicable, supply details of the organisation on whose behalf they were responding.

The survey we published on the website is included in **Appendix C**.

2.9 Methods of responding

Respondents to the consultation were invited to give their views by:

- Completing the questionnaire included on our website at [New woodland at North Carlton | Forestry England](#)
- Giving comments by email to Woodland.creation@forestryengland.uk
- Leaving comments or suggestions at the public information event held on Wednesday 19th March 2025, between 4.00pm - 7.00pm at Riseholme College Showground Campus, Horncastle Lane, North Carlton, LN1 2ZR

Feedback received at the drop in event is summarised separately in section 3.5 of this report.

2.10 Consultation materials and publicity

2.10.1 Consultation Materials

We published consultation information about the new woodland on our website.

This included:

- An overview of the new woodland creation programme and government tree planting objectives
- A site appraisal of the existing site - with photographs and maps to give context
- An overview of the surveys undertaken, our objectives and principles, that have informed our design proposals for the new woodland
- An overview of species included in the proposals
- Visuals of how the new woodland might look soon after planting and, in the future
- Our response to feedback received to early engagement and how feedback was reflected in our designs
- Information on how to respond to the consultation.

2.10.2 Consultation activity

We publicised the consultation in the following ways:

- **Media release:** distributed to local news outlets
- **Dedicated web page:** on the Forestry England website [New woodland at North Carlton | Forestry England](#)
- **Citizen space consultation portal:** <https://consult.forestryengland.uk/forest-districts/northcarltonnw>
- **Emails:** to local residents
- **Letters/emails:** to stakeholders
- **Posters:** a poster publicising the consultation and drop in event was put up in several locations near the site. Posters were also shared with North Carlton and Scampton Parish Councils for inclusion on their noticeboards/websites.
- **Consultation drop in event:** we held a drop in event at the nearby Riseholme College Campus. The event showed the information already published on the website on large posters around the venue and Forestry

England staff were on hand to talk about the proposals, answer questions or queries, and listen to any concerns from those attending.

Attendees were also encouraged to leave immediate feedback on the comments board and to respond to the consultation formally via the online survey, by email, or by completing a hard copy of the consultation questionnaire. We also asked attendees to leave their contact details if they would like to be kept updated about the proposals.

2.10.3 Analysis of consultation responses

Responses received to the consultation by completing the online survey or by email were analysed by assigning (or coding) the points made by each respondent to one or more codes within a code frame. Codes were organised by theme and separated into positive, concerns/negative and questions or suggestions. Each code reflects a point raised by one or multiple individuals in a variety of ways. From this it was possible to count how many times the same or similar points had been raised by respondents.

3. About the responses

We received 51 responses to the consultation including 8 responses from stakeholders (listed in **Appendix E**). 42 of the responses were received via the online survey, 5 responses by email and 4 completed hard copy questionnaires.

3.1 Overview of consultation responses

The 51 consultation responses were coded into 104 comments and categorised as a concern, question or comment and suggestion:

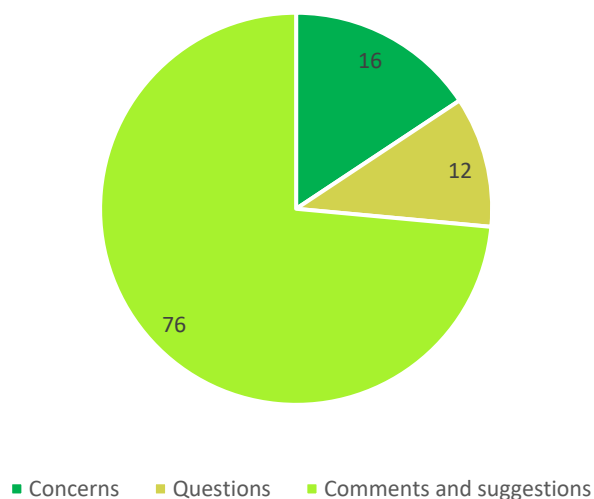


Figure 1: Overview of 51 responses by comment

3.2 Consultation responses by theme

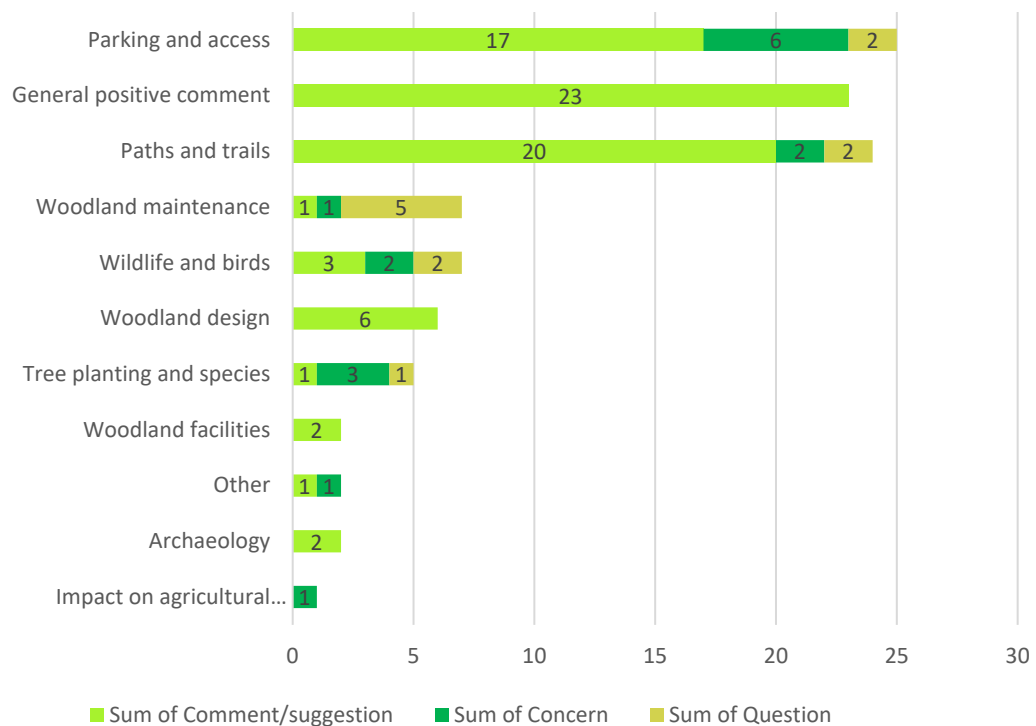


Figure 2: Responses by theme - 51 responses, 11 themes, 104 comments

3.3 Positive comments

We received 23 general positive/supportive comments such as ‘Support the proposals and think it’ll create a feature sorely missing from this immediate area’; ‘Sounds like a wonderful idea. We have few areas locally where we can walk in wooded areas and the benefits to wildlife will be immense’; ‘Fantastic idea, so little woodland locally, wildlife will definitely benefit, can’t wait to see how this develops over the years’.

3.4 Negative comments/concerns

We received 16 negative comments/concerns around the following themes:

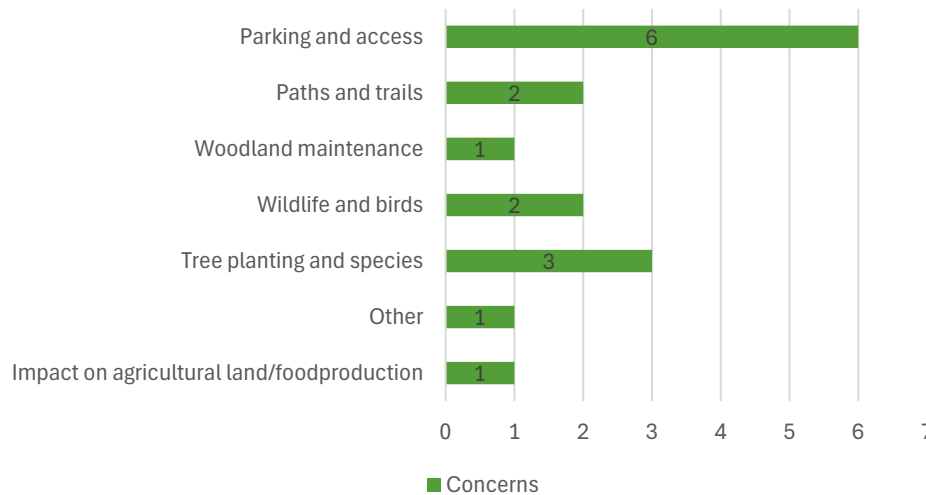


Figure 3: Negative/concerns - 16 comments

- 1. Parking and access:** People are concerned about parking on the narrow lanes at North Carlton, especially Church Lane, and the potential obstruction of property entrances and access for emergency and other service/delivery vehicles.
We also received a collective request submitted on behalf of Church Lane residents with 20 signatures - see section 3.6 for further information.
- 2. Paths and trails:** Concern that there is no safe cycling route to the new woodland and the designs don't include bridleways and horse-riding facilities.
- 3. Tree planting and species:** Concern about planting trees on the sloping ground (currently pasture) should there be any significant existing botanical interest; not enough broadleaved species have been included in the planting mix and the potential negative impact of planting trees in clumps.
- 4. Wildlife and birds:** Concern that the new woodland will affect birds like curlew, yellowhammer, skylark and barn Owls. There is also concern about the potential presence of important species in the grassland area next to North Carlton village and a request to undertake surveys.
- 5. Other concerns:** The impact on agriculture and food production, how fly tipping will be managed and the impact of sycamore seedlings on nearby horse grazing land.

3.5 Comments, suggestions and questions

In addition to the 23 general positive comments (see section 3.3), we received a further 12 questions and 53 comments and suggestions about the proposals.

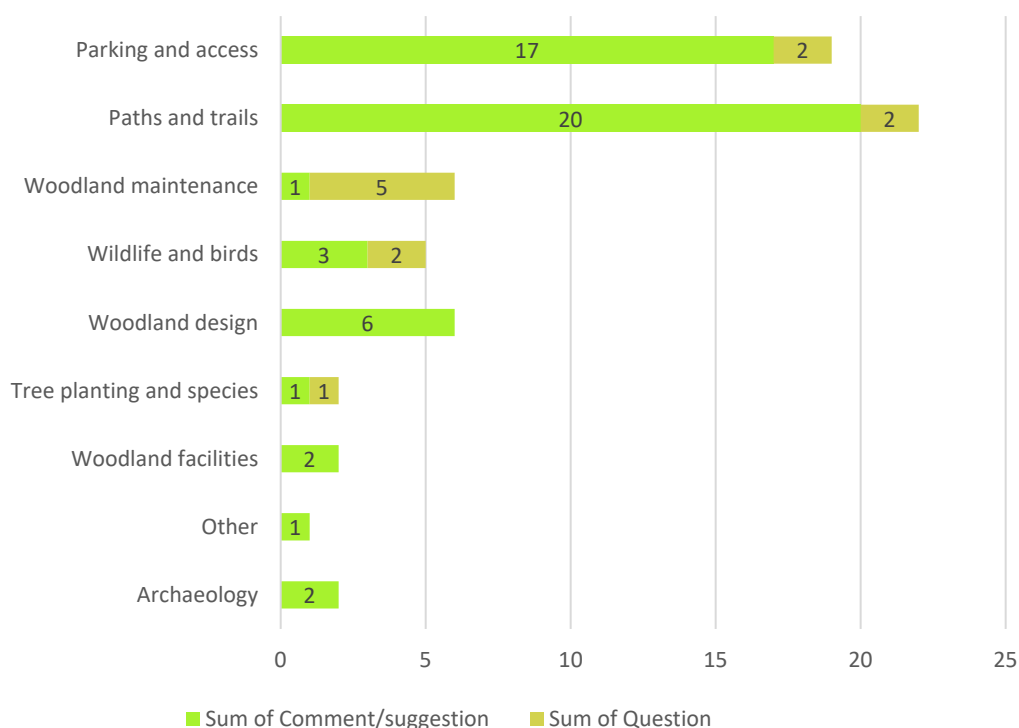


Figure 3: Comments, suggestions and questions - 53 comments

The top five themes and comments included:

1. **Paths and trails:** Comments and suggestions focused on requests to include off-road bike and mountain bike trails and bridleways and horse riding facilities. Feedback included specific questions and suggestions including:

Accessibility of Public Rights of Way (PROW):

- Measures to ensure the PROW will remain accessible during the creation of the new woodland.
- Link new paths within the woodland to existing PROW.

Upgrades and new links for walkers, cyclists and horse riders:

- Upgrade or provide permissive access along the public footpath North Carlton 194 for horse riders and cyclists.

- Provide links from the southern area to the bridleways from North Carlton and South Carlton and to the bridleway running west from North Carlton.
- Upgrade the footpath going north from North Carlton to bridleway status.

Cycling and mountain biking:

- Provide a set of off-road mountain bike trails in the northeast quadrant of the site.
- Include a fun cycle track in the northeast corner of the site.

2. Parking and access: Comments and suggestions focused on requests for the inclusion of parking in the design, with some specific questions and suggestions including:

- More information on how the impact of parking on Church Lane and the wider village will be monitored and addressed.
- Guarantees that Church Lane will not be used by Forestry England and their contractors to access the new woodland.
- Sign posting and casual parking provision.
- Suggestion that parking provision is unlikely to be an immediate issue, but should this change in the future, this should be located away from the village.

3. Woodland maintenance:

- Maintain open ground for safety during tree maintenance.
- More information about deer management.
- Forestry England's responsibilities for regular maintenance of the dykes.
- Include locked barriers to deter fly tipping.
- Include edge habitat on the external boundary to support nearby important bird species, such as grey partridge and corn bunting.

4. Wildlife and birds

- Undertake surveys to understand presence of important species in area of grassland adjacent to North Carlton village.
- Bird strike mitigation for existing powerlines.
- Presence of curlew, yellowhammer, skylark, barn owls - what measures will be taken to protect these?

5. Woodland design

- Leave the field between North Carlton village and Middle Street unplanted to preserve its ecological value.
- Include and maintain appropriate buffer zones along the edges of new and existing woodlands and observe recommended route protection area buffers for existing mature and veteran trees.
- Create and maintain open areas adjacent to watercourses.

- Clarify areas of permanent woodland
- Provide more information about what will be included in the parkland planting in historic Great Park.

The code frame summarising all the comments we received to the consultation are included in **Appendix E**.

3.6 Feedback from the consultation drop in event

Over 35 people attended the drop in consultation event. The event displayed the information already available to view on the website on large posters around the venue and Forestry England staff were on hand to talk about the proposals, answer questions or queries, and listen to any concerns from those attending. In addition, visitors to the event were invited to leave comments on feedback boards.

Feedback and discussion points broadly reflected comments already reflected in the consultation analysis in section 3.1 and included:

- Concerns about parking on Church Lane
- Ditch maintenance
- Views from neighbouring properties
- Ecology and presence of important species on the site
- Do not plant sycamore near fields with horses
- Use of existing buildings on the site
- Site security
- Timelines for planting the new woodland
- Include markers on powerlines for birds

We also received:

- Four hard copies of the questionnaire at the event (added to the consultation portal and included in the analysis in section 3.1).
- 1 sticky note posted on the feedback board asking for the inclusion of woodland areas for local schools to plant/adopt.
- 1 collective request (petition) submitted on behalf of Church Lane residents (signed by 20 signatories) - this set out concerns about parking and traffic in the village, particularly on Church Lane, and a request for Forestry England to commit to a range of measures to manage, monitor and mitigate these concerns.

3.7 Summary of stakeholder responses

We received consultation feedback from the following stakeholders. This feedback is reflected in the analysis and summarised below:

North Carlton Parish Council - broadly supportive of the proposals for the new woodland. Suggestion that parking should be kept under review, and should provision be required this should be located away from the village.

British Horse Society - concerned about the lack of provision for horse riding and suggestions for improvements/additional bridleway routes.

Lincolnshire Wildlife Trust - supportive of the maintenance of open corridors, particularly next to watercourses and the inclusion of appropriate buffer zones along the edge of the new and existing woodland. Concern about the area of grassland next to North Carlton village and request for surveys to identify the presence of any important species inhabiting this area.

Lincolnshire Access Forum - welcomes the proposals - suggests that paths should link to the existing PROW, specific footpath upgrades to bridleway status and the inclusion of bike trails and a car park.

West Lindsey District Council - (Planning - trees and landscaping) - no comments specific to North Carlton.

Upper Withiam Drainage Board - Advising that some of the water ways on the North Carlton site are within the Upper Withiam Drainage Board area and the applicable requirements for byelaw consents and maintenance strips. Additionally, advising on consent requirement for the watercourses on the site that are owned by Forestry England.

Historic England - Advises that the North Carlton woodland is unlikely to have any adverse impact to the landscape setting to the Scampton Villa. Suggestion for the design to address the section of Roman Road that may clip the corner of the woodland creation site as the road is also setting to the scheduled villa. Any roadside or pre-existing landmarks such as burial mounds would also be of interest in that setting context. Suggests that additional surveys may be beneficial.

Lincolnshire County Council Historic Places Team

Presence of archaeological remains and recommendations to factor this into the planting proposal designs to meet its objectives while avoiding any

negative impacts on the historic environment.

Natural England

Confirmed the proposal should have no significant impact on any nearby populations of non-woodland breeding waders; Asked for clarity on areas of permanent woodland; advised that the planting proposals should observe recommended root protection area buffers for existing mature and veteran trees and seek to maximise nature recovery opportunities; Suggested the inclusion of edge habitat on the external boundary to support nearby important bird species, such as grey partridge and corn bunting.

4. Our response to issues raised

We have considered the feedback we received to the consultation, and our responses to the key issues raised are set out in the following pages.

We have grouped the issues into broad themes for a more readily understood overview of the issues. Many respondents made positive comments about the proposals, all of which have been noted. For conciseness, the detail of these have not been included in our response.

Our designs presented during the consultation were shaped by best practice standards set in the [UK Woodland Assurance Standard](#) and the initial feedback received during early engagement, as well as by further survey work. As a result, they already incorporated several suggestions, including the provision of open space and grassland, the planting of fruiting trees and the inclusion of new or upgraded tracks and barriers to discourage unauthorised access and antisocial behaviour.

Following a careful review of the public consultation responses, we will:

- Ensure open spaces are retained around the Roman road and the setting of the Scampton villa.
- Monitor reports of inappropriate parking by visitors to the new woodland. Should this issue become more significant, we will reassess our current approach.
- We are reviewing the use of the barrier at the entrance to the new woodland off Church Lane to limit vehicle access to the site and give consideration for turning for Church Lane residents and refuse collection vehicles.
- Exclude sycamore trees from planting close to the horse paddocks.
- Designate specific vehicle routes and access points for Forestry England staff and contractors from local roads to minimise disturbance within the village.

North Carlton - our responses to issues raised

1.0 Archaeology

1.1 **Presence of archaeological remains and recommendation to factor this into our designs.**

We have incorporated expert advice and archaeological surveys into our designs and have included open spaces around the Roman road and the Scampton villa setting.

2.0 Parking and access

2.1 **Provide more information on how visitor parking on Church Lane and the wider village will be monitored and addressed; include signposts**

The new woodland will be open to the public and can be easily visited on foot on the existing public footpaths from North and South Carlton and the surrounding area. We have no plans to include visitor or other recreational facilities and therefore our proposal does not include public parking. We want to avoid a significant increase to car traffic on local roads.

We recognise the concerns some residents have about parking, particularly on Church Lane. We have made the Lincolnshire Highways department aware of the concerns raised. We will monitor reports of inappropriate parking and consider signs at woodland entrances to discourage inappropriate parking should this be necessary. Instances of inappropriate parking by visitors to the new woodland can be reported to central.district@forestryengland.uk.

We are reviewing the use of the barrier at the entrance to the new woodland off Church Lane to limit vehicle access to the site and give consideration for turning for Church Lane residents and refuse collection vehicles.

2.2 **Include signposts for vehicle parking, for example via the tarmac road leading to the grain silos at the bottom of the village.**

We have no plans to include parking. Due to the change of land use from agriculture to woodland management, there will likely be significantly fewer vehicles using the tarmac road, but access will be maintained for forestry purposes and the users of the site buildings.

2.3 **Guarantee that Church Lane will not be used as an access route by Forestry England vehicles and their contractors.**

Although Forestry England has a legal right of access onto the site via Church Lane, we do not intend to use this as a main access point and will actively dissuade contractors from using it.

2.4 How will the maintenance of the local road be managed given the increase in traffic and use by large vehicles carrying materials and personnel?

At the start of creating the new woodland, we'll need to bring in vehicles to deliver equipment and materials like fencing and tree saplings, and materials for creating tracks. This will mostly happen over the first one to two years. After that, vehicle visits will be much less frequent.

To reduce disruption to the village, we'll ask staff to use routes and entry points from specific directions. We're also applying for planning permission to build a new access road from the A1500 to the north of the site, which would be better suited for larger vehicles in the long term.

2.5 Negotiate with local transport planners/ provider to re-introduce a bus service to minimise traffic and provide access to the woodland for a more diverse population

We expect most visitors will walk to the new woodland which has been designed to be a quiet, natural space without recreational facilities or visitor attractions. Therefore, we don't expect a high demand for a new bus route to the new woodland.

2.6 Include space for 'casual parking' at the A15/Tillbridge Lane access

The new woodland has been designed as a quiet area for everyone to enjoy, especially local residents. While there won't be a designated parking area, the woodland can be reached using the existing public footpaths. The Tillbridge Lane access is subject to planning permission.

2.7 Consider parking provision away from the village should visitor parking become an issue once the woodland is established

We will monitor reports of inappropriate parking by visitors to the new woodland. Should this become a significant concern, we will reassess our current position on the matter. Instances of inappropriate parking by visitors to the new woodland can be reported to central.district@forestryengland.uk.

3.0 Paths and trails

3.1 **Include bridleways and facilities for horse riding, off-road cycling and mountain bike trails**

Horse riders and cyclists are welcome to use the existing bridleway through the site, but there is no plan to provide additional infrastructure within the new woodland for horse riders and cyclists.

In light of feedback, we are reviewing whether surfaced forestry tracks in our new woodland could also be used to extend access for cyclists and horse riders in the future where appropriate.

Upgrade or provide permissive access along the Public Footpath North Carlton 194 for horse riders and cyclists.

Provide links from the southern area to the bridleways from North Carlton and South Carlton and to the bridleway running west from North Carlton.

Upgrade the footpath going north from North Carlton to bridleway status.

Forestry England do not own or manage adjacent land and improving access in the wider area is not within the project's scope or funding. Lincolnshire County Council is primarily responsible for public rights of way, including bridleways and public footpaths and we have contacted them as part of this consultation.

3.2 **Address the lack of a safe cycling route to access the woodland.**

This falls outside the scope and remit of the project. The current funding does not cover the provision of cycling infrastructure

3.3 **Link new paths within the new woodland to existing public rights of way**

We have included a circular grass route in the eastern part of the site that connects to two of the public footpaths.

3.4 **How will the Public Right of Way (PROW) remain accessible during the creation of the woodland**

We will carefully plan and co-ordinate the creation of the new woodland to minimise any impact on existing public rights of way. In the unlikely event that planting temporarily obstructs the right of way, this would be clearly marked and signage will inform users about the tree planting activities and any temporary changes to the pathway. We will comply

with local regulations and guidelines regarding public rights of way and tree planting.

4.0 Tree planting and species

4.1 **Concern about the potential negative impact of planting small clumps of similar species. Is this just the majority species in each plot or will it be specific species to each plot?**

At North Carlton we plan to plant 31 different species across the site. Our expert foresters have carefully considered the ecological resilience and landscape impact of each species and mix in the design process. We will plant trees in a range of formats to help create a more natural and diverse woodland structure, to facilitate ongoing management and to promote better growth and health for the trees. Use of a range of formats and planting densities will support future timber production, improve the aesthetic appeal of key areas and provide varied habitats for wildlife, supporting richer biodiversity.

4.2 **Concern if tree planting is proposed on the sloping ground (currently pasture) should there be any significant existing botanical interest**

Our designs for the new woodland do not include tree planting on the sloping ground on Lincoln Cliff.

4.3 **Include some non-commercial trees dotted about to attract bees and over wintering birds - such as crab apple, and other native fruit trees**

We plan to plant around 12 hectares of native shrubs like hawthorn, blackthorn, and spindle, along with rowan and wild cherry. There will also be areas of wood pasture and open spaces that will benefit birds and insects during the winter.

4.4 **Include more broadleaved trees in the planting mix**

Our planting mix includes 22 species of broadleaf trees, with approximately 40% of the woodland planting being broadleaf. This selection will offer seasonal interest and ensure a sustainable timber supply for the future.

5.0 Wildlife and birds

5.1 **Undertake surveys to understand the presence of important species in the areas of grassland adjacent to North Carlton Village**

We have conducted a preliminary ecological appraisal to gain a better understanding of the site's existing ecology and species. The design

includes areas of grassland and shrub planting to support a range of biodiversity in addition to the woodland itself.

5.3 Presence of curlew, yellowhammer, skylark, barn owls - what measures will be taken to protect these?

The presence of woodland in a predominantly arable landscape will create additional habitats for various bird species. Through the Local Environmental Records Centre and consultation feedback, we have identified the bird species present on the site. The woodland has been designed to include a variety of habitats, such as woodland edges and open grassland.

5.4 Include bird strike mitigation on existing powerlines

At North Carlton, the likelihood of birds striking powerlines is likely to decrease as the trees grow taller. In England and Wales, National Grid is responsible for owning, constructing, and maintaining pylons, overhead lines, and underground cables. They also take responsibility for implementing measures to protect birds and wildlife around the transmission network.

5.5 Include edge habitat on the external boundary to support nearby important bird species, such as grey partridge and corn bunting

Our design for the new woodland includes extensive shrub and edge planting around most planting areas to cater for the possible presence of these species on site. Some areas will also be retained near the village of North Carlton, and managed as wide spaced trees and wood pasture, to retain additional open areas.

5.5 Maximise nature recovery opportunities

The site has several objectives, including boosting biodiversity, capturing carbon from the atmosphere, and providing public access to nature to support health and wellbeing. The design includes natural colonisation, a diverse woodland structure, open space and a mixture of tree and plant species.

6.0 Woodland design

6.1 Leave the field between North Carlton village and Middle Street unplanted to preserve its ecological value.

This area of the site will predominantly be managed as open space with scattered/widely spaced parkland tree planting.

- 6.2 Include and maintain appropriate buffer zones along the edges of new and existing woodlands and open areas adjacent to watercourses**
Our woodland design includes appropriate buffer zones along the watercourses present on the site.
- 6.4 Provide more information about what will be included in the parkland planting in historic Great Park.**
Our planting in this area includes scattered/ widely spaced sweet chestnut, oak, rowan and black walnut.
- 6.5 Clarify areas of permanent woodland**
Broadleaf and mixed woodland corridors have been designed into the proposals, which together with coniferous woodland areas will connect surrounding woodland habitats. This will be a working woodland, as such cyclical felling will take place at a range of scales, providing a sustainable source of renewable materials while retaining functional links across the woodland. We have no plans to clear fell woodland corridors in their entirety.
- 6.6 Observe recommended root protection area buffers for existing mature and veteran trees**
The existing mature and veteran trees have been identified as Trees of Special Interest and will include a buffer zone of at least 5 meters beyond the drip line of the tree.

7.0 Woodland facilities

- 7.1 Include litter bins and toilets**
The new woodland has been designed as a quiet area for local people, and we have no plans to add visitor facilities or litter bins to the new woodland. Visitors to all our woodlands are encouraged to adhere to the [Forest Code](#) and take their litter home to minimise the risk of damage to the landscape and wildlife.

8.0 Woodland maintenance

- 8.1 Provide more specifics about information about protecting the woodland from deer**
We have conducted a deer impact assessment to evaluate the potential effects of deer at North Carlton on the environment, particularly focusing on vegetation and ecosystems. We plan to include deer fencing

around the main planting areas of the new woodland and tree shelters in small pockets of woodland.

8.2 Maintenance of open ground to ensure tree safety issues next to the road on the northern boundary at North Carlton?

The woodland design includes a wide buffer zone in this area to allow for safe maintenance of the woodland as well as creating an attractive woodland edge.

8.3 What are Forestry England's responsibilities for the regular maintenance of the dykes.

We have engaged with the relevant authorities to understand the details of the streams and ditches within the woodland.

We have liaised with the local authority (about private water supplies), the Environment Agency and the Witham Third District Drainage Board and have the details of the watercourses and ditches within the new woodland site. We will include buffer zones between the existing ditches and the woodland planting. Forestry England will conduct periodic ditch inspections and assess any maintenance needs on the ditches we are responsible for to maintain suitable conditions for tree growth, subject to any local constraints and management requirements and liaise with the Witham 3rd IDB to allow access for their general maintenance. Forestry England will conduct periodic ditch inspections and assess any maintenance needs on the ditches we are responsible for to maintain suitable conditions for tree growth, subject to any local constraints and management requirements and liaise with the Witham 3rd IDB to allow access for their general maintenance.

8.4 How will fly tipping be addressed? Include locked barriers to deter fly tipping/trespassing

We will review any reports of anti-social behaviour and assess any actions that Forestry England may need to take. We understand the importance of maintaining a safe and welcoming environment in our new woods. We plan to include barriers at key access points to discourage unauthorised access and antisocial behaviour.

8.5 What responsibilities do you have for the strip of land that adjoins Havelock House and what is your management plan?

We are in touch with the individual concerned to clarify responsibilities.

9.0 Other

9.1 Volunteering, woodland school

Forestry England works with many 'friends of' societies and community groups that help manage our woodlands. Whilst we have limited resource to support long term volunteering opportunities on the site, we will monitor use and interest at our new woodland sites in the area as part of our wider engagement plans across the district.

9.2 Concern about sycamore seeds in the wind and impact on neighbouring equine grazing land

Our planting will not include sycamore close to the horse paddocks.

Appendix A: A new woodland at North Carlton - our response to key themes from early engagement

(Also included in the consultation information presented on the website and at the public drop in events)

We invited local people to share their initial views about our plans to create a new woodland on land close to the village of North Carlton. Here are our responses to the key themes and questions people raised.

Users of the new woodland and public access

The new woodland at North Carlton will be open to the public and provide a quiet space for local people to enjoy. Once the new woodland is established, we will dedicate it under the Countryside and Rights of Way Act so people can explore the site.

Pedestrians will be able to visit the new woodland via the network of existing public rights of way into the site. These, and a network of new unsurfaced grass routes will give access for woodland maintenance and for people to explore the new woodland. There are no plans to include new surfaced trails, cycling or horse-riding specific infrastructure.

Visitors will be welcome to walk their dogs in the new woodland, but we have no plans to fence around the whole woodland. We expect all dog owners to be responsible and to keep their pets under control in all the forests and woodland we care for, following signs and our Forest Dog Code.

Parking and traffic

The woodland will be open to the public and can be easily visited on foot on the existing public footpaths from North and South Carlton and the surrounding area. We have no plans to include visitor or other recreational facilities and therefore our proposal does not include public parking. We want to avoid a significant increase to car traffic on local roads.

To manage the woodland, we need road access for our forestry vehicles. We plan to use existing entrances on Carlton Lane and, subject to planning permission, an entrance on the northern boundary off Tillbridge Lane. At some of these entrances we plan to include new or upgraded tracks and barriers to discourage unauthorised access and antisocial behaviour. We won't use Church Lane for our woodland vehicles.

Design, landscape and views

The new mixed woodland will enrich the landscape by boosting biodiversity and enhancing the natural environment. We have done surveys to tell us more about the plants, wildlife, and archaeology at North Carlton. These surveys, along with a landscape and visual appraisal have guided our draft designs.

Our designs carefully consider the view west from Lincoln Cliff, particularly from the existing public rights of way. The eastern edge of the woodland includes open space, wider spaced tree planting, shrubs and broadleaf trees to create an attractive and natural looking edge to the woodland. We have left open spaces where there are heritage features below ground, like the Roman road, as recommended by heritage experts. The design includes new grass routes and open spaces. Existing hedgerows will be kept creating diverse habitats for wildlife and connectivity beyond the woodland and to benefit biodiversity such as butterflies and birds.

We have carefully considered how close the new woodland will be to our new neighbours, and we will plant groups of shrubs at the edges of the woodland near neighbouring properties and close to North Carlton. Planting native broadleaf trees on the edges and an area of wood pasture, will support a wide range of wildlife including varied species of birds, mammals, insects and fungi all of which thrive in the diverse environment created by these trees.

The woodland has been designed sensitively along existing footpaths and retains views to St Luke's church at North Carlton. New wide grass routes will provide access to maintain the new woodland and improve the landscape for visitors. Areas near powerlines and underground services, will also be kept as open spaces, opening up views. These areas will have a natural shape, often with groups of shrubs along their edges to blend in with the surroundings.

The trees we will plant

We are using years of experience and the latest scientific evidence to plan in detail for the trees we will plant for the new woodland. Our surveys help us to choose the trees most suitable for the site now and as the climate changes. Our professional foresters carefully choose what trees to plant and where to plant them. They understand the local soil, how quickly the trees will grow, and the important habitats, species and geographical features nearby. We also consider tree pests and diseases and future climate conditions to keep woods as healthy as possible.

The species will be a mix of broadleaf and conifer, often planted together in mixtures, with groups of shrub species along edges to increase the variety and provide seasonal colour and texture. Species have been chosen to produce a future source of sustainable timber. This supply of homegrown wood products will

support the wider British timber and forestry industry, helping to reduce the demand for imports from other countries.

Species at North Carlton might include Scots, Macedonian and loblolly pine, black poplar, oak chestnut, silver and downy birch and common alder. Shrubs could include alder buckthorn, spindle, dogwood and blackthorn, guelder rose, and rowan.

Establishing and managing the new woodland

We aim to plant the new woodland in winter 25/26. Maintenance during the first five years is especially important to ensure the woodland's long-term success. The woodland will be managed by the Forestry England team and our contractors. Forestry England will develop a Forest Plan to make sure that future timber production is sustainable. As part of our ongoing management of the woodland, we will begin to remove some trees after about 20-25 years - this will provide a sustainable supply of timber and help the woodland to thrive for many years to come.

Protecting the new woodland from deer

The UK is home to six species of deer. As their natural predators (bears, lynx and wolves) are no longer present in the UK, our wildlife management team have to manage the deer populations. Without predators or management, deer populations become unnaturally large, and their browsing can damage or kill young trees and wildlife habitats, reducing the resilience of the new woodland to the effects of climate change and lowering the carbon captured from the atmosphere.

We will use deer fencing to protect larger blocks of new planting and tree tubes in smaller areas. Rabbit and deer fencing will protect young trees from browsing, while tree tubes will safeguard smaller, widely spaced areas. After the woodland has become established, deer fencing and tree tubes will be removed and recycled where possible. This usually happens after approximately 10 years.

Forestry England is part of the [Deer Initiative](#)¹, a partnership that promotes sustainable deer management in England and Wales. Our highly skilled wildlife management team will replace the role of Britain's missing predators by safely and humanely controlling deer populations in our woodlands, working to the highest standards. More information about how Forestry England manage deer can be found on our [website](#)².

Why are you planting agricultural land?

Lincolnshire is currently the least wooded county in the East Midlands. The new woodlands will capture carbon, restore and connect habitats, enhance biodiversity, supply sustainable homegrown timber and wonderful places for people to enjoy.

The site has been individually and carefully assessed so it is suitable for woodland creation and sensitive to the local landscape. Forestry England understands concerns around food security and keeping the best land in agricultural production. Our woodland creation programme seeks to avoid the most productive land (grades 1 & 2). The land at North Carlton is graded at 3. Forestry England's role is to manage and expand the nation's forests to ensure they are healthy and sustainable and benefit wildlife, people and the economy.

Timber is a crucial material for the UK's green economy helping a move away from higher-emission materials like steel, concrete, aluminium and bricks. It is renewable, sustainable, and has a lower carbon footprint, making it essential for environmentally friendly construction and manufacturing practices. Currently the UK imports over 80% of its timber.

¹ <http://www.thedeerinitiative.co.uk/>

² <https://www.forestryengland.uk/article/managing-deer-the-nations-forests>

Appendix B: Consultation information

Exhibition boards - can be viewed below or on our website by [clicking here](#)



Forestry England are planting new woodlands to expand the nation's forests

We are working on designs for a new woodland at North Carlton, Lincolnshire, approximately 3.5km north of Lincoln. We would like your comments on our initial proposals. Your feedback will inform our final designs for the woodland.

Working with public and private landowners, we're choosing the right places for woodlands to grow and flourish, carefully planting a mix of tree species to be resilient in our changing climate.

Every new woodland will have public access so you can explore and enjoy them to support your health and wellbeing.

They will be valuable places for wildlife, often linking other woods and hedges to provide green corridors for wildlife to move and thrive across the landscape.

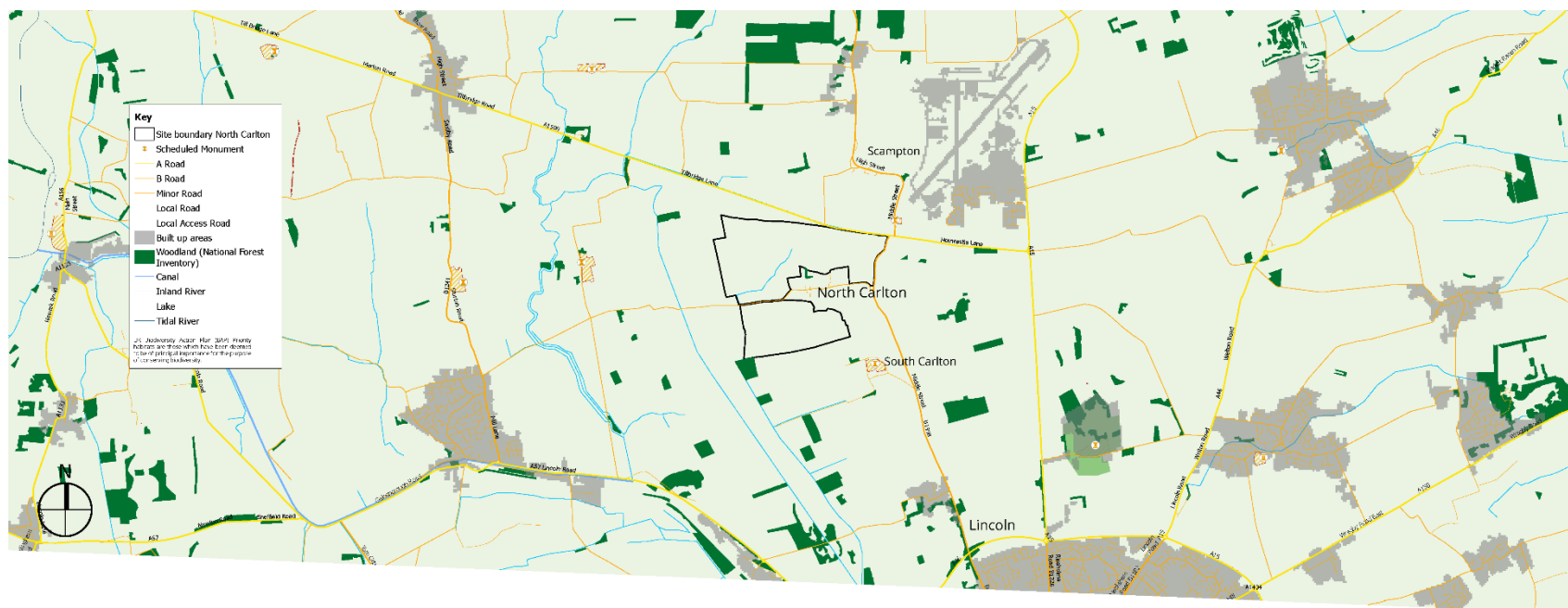
In time, each new woodland will provide sustainable timber, contributing to the rural economy. And they'll have wider environmental benefits including absorbing carbon, improving soil health and air quality, and water management.

Forestry England is creating these woodlands through the Department for Environment, Food & Rural Affairs (DEFRA) Nature for Climate Fund.

Scan the QR code to find out more:

forestryengland.uk



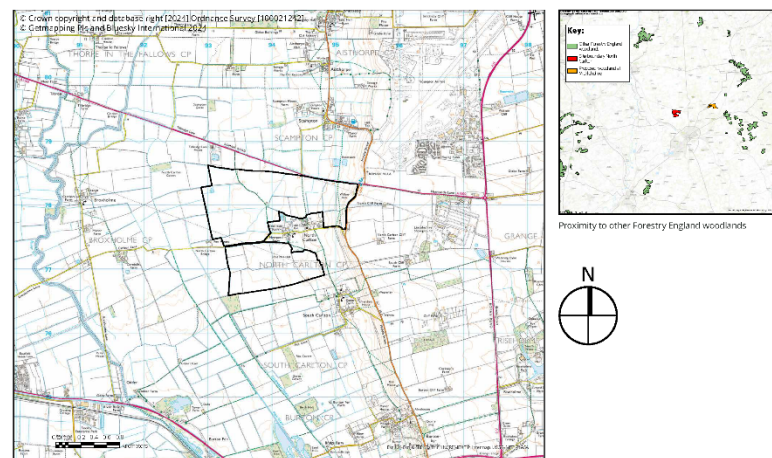


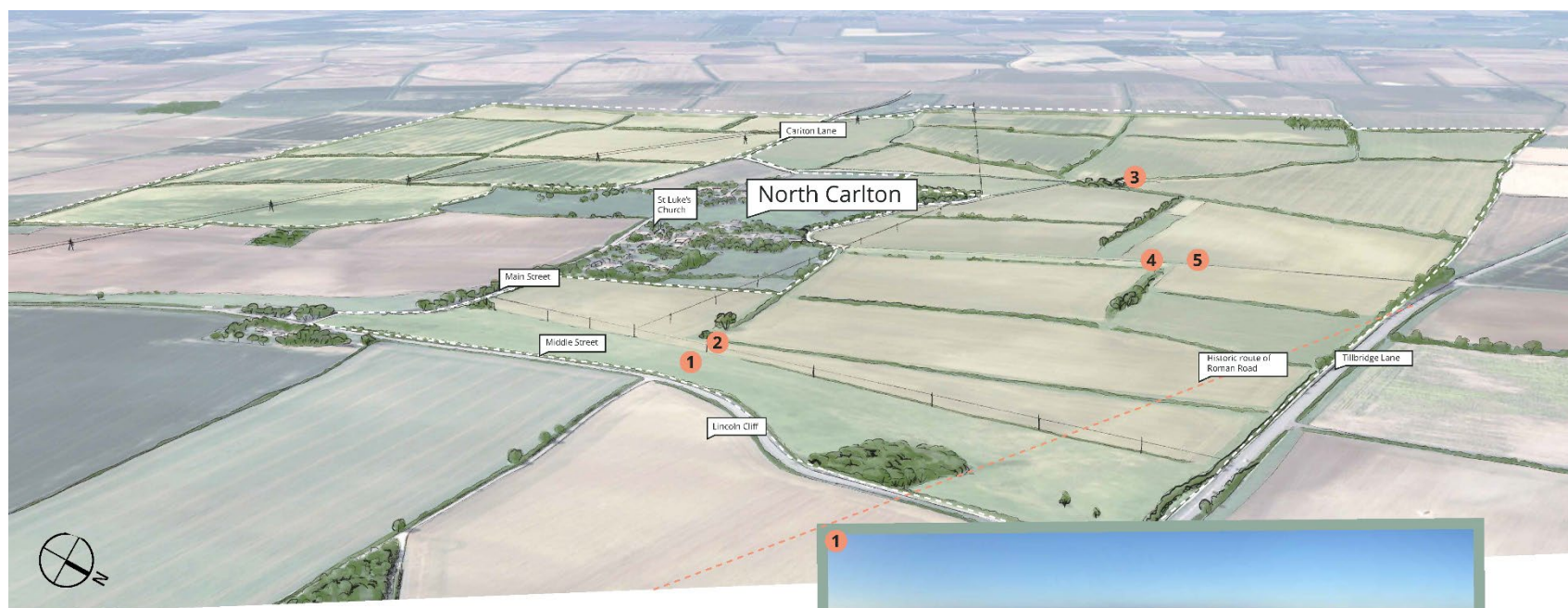
Site location & context

The proposed new woodland is next to the village of North Carlton and about 300m north of South Carlton, within the Lower Lincolnshire plain and just west of the Lincoln Cliff escarpment.

The site for the new woodland lies within Natural England's National Character Areas '45 Northern Lincolnshire Edge with Coversands' and '48 Trent and Belvoir Vales'. These areas have low levels of woodland cover (6.7% and 5.6% respectively).

Agriculture is the main land use in the area. While most pasture has been converted to arable use over the years, some areas are still grazed. The landscape features a pattern of medium to large fields enclosed by hawthorn hedges and a network of rivers, dykes and ditches. There are small blocks of mixed woodland and areas of trees and shrubs planted for wind protection. To the east, the land is elevated with the distinctive limestone cliff running north-south, offering extensive views to the west. Villages with historic character, such as North Carlton and South Carlton, lie at the foot of the escarpment along with historic halls and parkland landscapes.





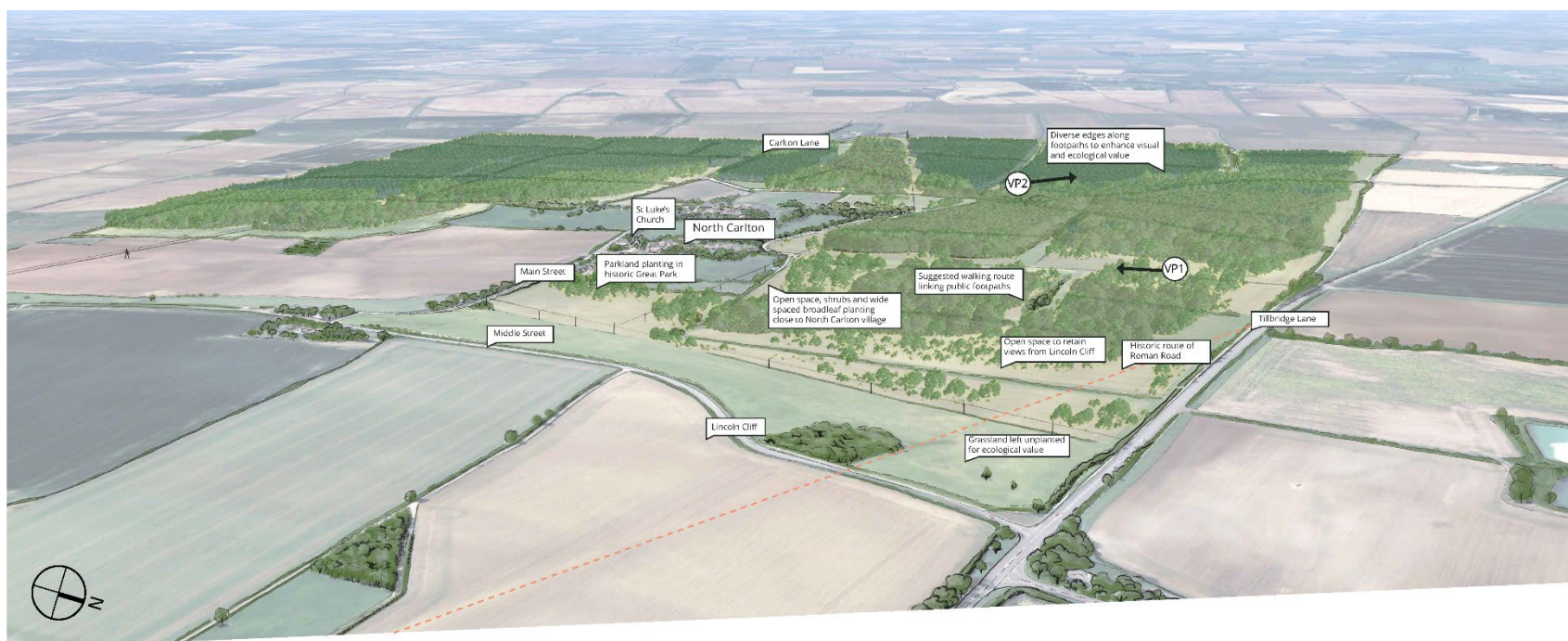
The existing site

The 290ha site is mostly former arable farmland with medium to large fields. There are many ditches along the field boundaries, a stream, and hedgerows of varying quality. In the northwest corner of the site there is a small copse of woodland around a pond and areas of grassland and scrub at the edges of the fields and to the east, leading up to Lincoln Cliff. From here there are extensive views across the site from two public rights of way on the cliff.

The landscape around North Carlton changes from the broad open fields to the west and south to a more intimate setting with hedge-lined lanes. The area around North Carlton village has strong historic character including Scheduled Monuments, such as South Carlton shrunken village, Roman roads and listed buildings including St. Luke's church and North Carlton Hall. Approaching the cliff, the landscape becomes richer in diversity, and offers a more varied visitor experience.

Photos: 1. View west from footpath near Lincoln Cliff. 2. View south from footpath towards North Carlton. 3. View within the northern part of the site. 4. View west from track in the east of the site. 5. View north along bridleway within the site.



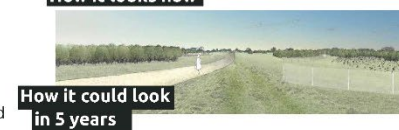
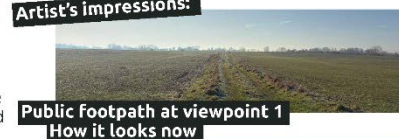


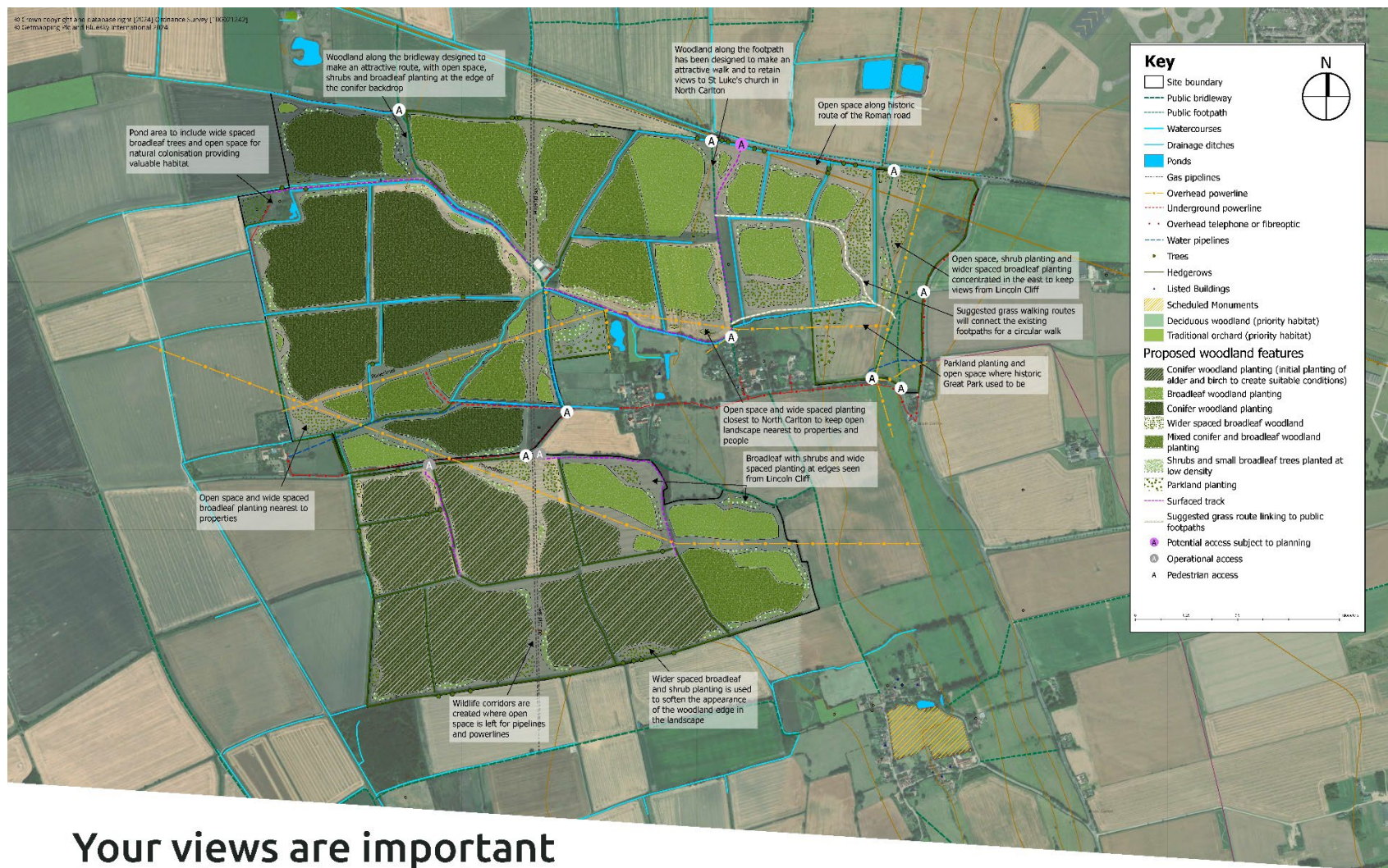
How the new woodland could look

Our initial designs include proposals to:

- Add visual diversity in the landscape by planting a mix of conifer, broadleaf and conifer/broadleaf mixes as well as native trees and shrub mixes.
- Reflect the importance of the view from Lincoln Cliff in the woodland design by leaving open space and planting shrubs with low density broadleaf trees in the eastern part of the site.
- Keep the view towards St Luke's church along the footpath from the north of the site by leaving open space and clear sight lines.
- Leave open space where heritage features have been identified and include some widely spaced trees where the historic Great Park once was.
- Plant shrubs and broadleaf trees at lower densities close to North Carlton and in areas where properties overlook the site.
- Create open corridors by leaving buffers around hedgerows, streams, ditches, powerlines and pipelines. Along these open spaces plant shrubs in key locations at the edges of the woodland which also will benefit wildlife.

Artist's impressions:





Your views are important to us - let us know what you think



Forestry England

Your views are important to us - let us know what you think

Responding to this consultation

We encourage you to submit your response online. You can view our plans and submit your views by completing the online feedback form at:

- <https://consult.forestryengland.uk/forest-districts/northcarltonnw>

- If you are unable to do this, you can respond via email at woodland.creation@forestryengland.uk

All views should be received by midnight on Sunday 6th April

What's next ?

- Review of consultation feedback and additional surveys
- Further design work to refine our proposals
- Application to the Forestry Commission for permission to create the new woodland
- Initial planting (Winter 2025/26)

**Scan the QR code
to find out more:**

forestryengland.uk





Forestry England

New Woodland at NorthCarlton

Public consultation event on our proposed design

19th March 4-7pm - Riseholme College,
Showground Campus, Horncastle Lane, LN12ZR

Please drop in at any time during this period, to view the
proposed design and speak to a member of our team.

For more information and to respond to the consultation
visit: bit.ly/consultNCW



The consultation closes at midnight Friday 4th April 2025


You can also contact us at:
woodland.creation@forestryengland.uk

forestryengland.uk

Event poster


Forestry England Website

<https://www.forestryengland.uk/article/new-woodland-north-carlton>



Visit – Things to do – Forestry and wildlife – Support us – Membership – About us – [Donate](#)

New woodland at North Carlton



At Forestry England, we're expertly creating a new woodland on land at North Carlton in Lincolnshire.

The new 195 hectare woodland will become a new green space for you to explore and enjoy, whilst also being a valuable habitat for wildlife and producing sustainable timber for a greener economy.

We'll carefully choose tree species that will both thrive at this new site now, and be resilient to future climate conditions as they grow and mature. The land will be planted with a mixture of broadleaf and conifer species, chosen to match local soil types. The landscape design will also incorporate open space for conservation and visual diversity.

North Carlton public consultation

The draft design proposals for the new woodland are now complete and we invite your comments on them. You can comment online until Sunday 6 April via the button below.

We'll also be holding a public drop-in event in March - details can be found on the consultation page too.

[View the plans](#)

New woodlands in Lincolnshire

This new woodland is one of the many we're creating to grow the nation's forests, with support from the Nature for Climate Fund. In Lincolnshire alone, we're creating 854 hectares of new woodland at four sites across the county. Lincolnshire is currently the least wooded county in the East Midlands.

The other new woodlands we are creating in Lincolnshire are [Cadzoy](#), [Middleholme](#), and [Newball](#).

Frequently asked questions about the new woodland at North Carlton

We'll carefully plan in detail the trees that will be planted in the new woodland. Using a mix of tree and shrub species will help make the wood resilient to climate change and tree diseases, whilst also supporting a wider range of wildlife.

Some areas will be planted with a mix of trees, including broadleaved trees and conifers. This will complement the local landscape, provide seasonal colour and increase resilience.

When will works start and finish?

We're in the early stages of creating our designs for the new woodland. Public feedback and surveys will inform our detailed plans for the new woodland. Our aim is to create the new woodland over the next couple of years with initial planting beginning in winter 2025/26.

How do I stay in touch about the project?

We will post key updates on this webpage as the project progresses.



Consultation event images

Appendix C: Consultation questionnaire



A proposed new woodland at North Carlton

Overview

Forestry England would like to share with you our proposed plans for the new woodland near North Carlton

Why your views matter

Your feedback, as well as site surveys, has helped shape proposals showing how the new woodland could look. Forestry England value your comments and feedback on the proposal and welcome you to our consultation event.

Introduction

Thank you for taking part in this consultation on the design proposals for a new woodland at North Carlton.

You can submit information without completing the name and email details, but if you choose to do so they will be held by Forestry England as per our privacy policy [Privacy Policy | Forestry England](https://www.forestryengland.uk/privacy) (<https://www.forestryengland.uk/privacy>)

1. What is your name?

2. What is your address?

3. What is your postcode?

4. Are you responding as:

- ☐ A local resident
☐ A local business
☐ A elected official
☐ Other stakeholder: Please name below

5. If you're responding on behalf of an organisation, what is the name of your organisation?

6. What is your e-mail address?

7. Would you like to be notified about future consultation on these new woodland proposals?

- ☐ Yes (please make sure you have provided your e-mail address above)
- ☐ No

Feedback

8. Please use this space to add feedback or questions on the proposed plans

Appendix D: Emails/letters announcing the launch of consultation

email to neighbours

Dear neighbour

Public consultation on draft design proposals for a new woodland at North Carlton

Thank you for your response to our early engagement survey about our new woodland at North Carlton.

I am now contacting you about the launch of a public consultation on our draft design proposals for the new woodland.

These are available to view and comment upon until midnight on Sunday the 6 April at: <https://consult.forestryengland.uk/forest-districts/northcarltonnw>

While we continue with our detailed planning for the woodland, (survey and maintenance work is currently underway at the site), we are keen to hear your views on our initial design proposals. These have been informed by site surveys as well as the valuable insights gained from you and other local people late last year.

The new woodland will be a valuable place for timber production, wildlife, and people. It will have public access so you will be able to explore and enjoy it to support your health and wellbeing.

Public drop-in events

As part of the consultation, we will also be holding a drop-in event where you can view our proposed designs and talk to members of the Woodland Creation project team:

Date: Wednesday 19th March 2025 **Time:** 4.00pm - 7.00pm **Location:** Riseholme College Showground Campus, Horncastle Lane, North Carlton, LN1 2ZR

The new woodland at North Carlton will be one of many that Forestry England is planting and will form part of wider plans to increase tree planting across the UK.

Please feel free to share this email with any friends or neighbours who may also be interested in our plans.

Kind regards

The Woodland Creation Team

Responding to the consultation

The consultation will be open from Monday 10th March to Sunday 6th April.

Online: We encourage you submit your response online. You can view our plans and submit your views here: <https://consult.forestryengland.uk/forest-districts/northcarltonnw> ; or here: bit.ly/consultNCW

If you are unable to do this, you can respond via email, typing 'North Carlton consultation response' in the header of your email and including your name, address, and postcode in your response.

Next steps

The consultation will close on Sunday 6th April. All responses will be summarised and included in a consultation report along with our response to the key issues raised and published on our website. Consultation feedback and further surveys will help shape the final design proposal we will submit to the Forestry Commission for regulatory review ahead of planting the new woodland.

The Woodland Creation Team
Forestry England

Email: woodland.creation@forestryengland.uk
www.forestryengland.uk



Letter or email to Parish councils

Public consultation on draft design proposals for a new woodland at North Carlton

Dear Scampton Parish Council

Thank you for your response to our early engagement survey about our new woodland at North Carlton.

I am now writing to let you know about the launch of a public consultation on our draft design proposals for the new woodland. These are available to view and comment upon [here](#) until midnight on Sunday 6th April.

While we continue with our detailed planning for the woodland, (survey and maintenance work is currently underway at the site), we are keen to hear views on our initial design proposals.

Public drop-in event

As part of the consultation, we will also be holding a drop-in event where you can view our proposed designs and talk to members of the Woodland Creation project team:

Date: Wednesday 19th March 2025 **Time:** 4.00pm - 7.00pm **Location:** Riseholme College Showground Campus, Horncastle Lane, North Carlton, LN1 2ZR

I attach a PDF copy of a poster promoting the consultation and drop-in events and would be grateful if you could include this on your website or notice boards where available. I also attach a copy of the email we have sent to all those that responded to our early engagement and indicated that they would like to receive updates as we progress with our plans for the new woodland.

Whilst we are encouraging all responses to be submitted online (please see below), should any of your parishioners be unable to access a computer, or attend the event, responses can also be submitted by post at the address below:

Woodland Creation team - Forestry England
620 Bristol Business Park
Coldharbour Lane
Bristol
BS16 1EJ

Kind regards

Brigid

Woodland Creation
Forestry England
www.forestryengland.uk/woodland-creation

Responding to the consultation

The consultation will be open from Monday 10th March to Sunday 6th April.

Online: We encourage you submit your response online. You can view our plans and submit your views here: <https://consult.forestryengland.uk/forest-districts/northcarltonnw> or bit.ly/consultNCW

If you are unable to do this, you can respond via email, typing 'North Carlton consultation response' in the header of your email and including your name, address, and postcode in your response.

Next steps

The consultation will close on 6th April. All responses will be summarised and included in a consultation report along with our response to the key issues raised and published on our website. Consultation feedback and further surveys will help shape the final design proposal we will submit to the Forestry Commission for regulatory review ahead of planting the new woodland.



Appendix E: Code frame (consultation responses)

Theme	Mentions
Archaeology	2
Address in the design the section of Roman Road that may clip the corner of the woodland creation site as the road is also setting to the scheduled Scampton Villa. Any roadside or pre-existing landmarks such as burial mounds would also be of interest in that setting context.	1
Presence of archaeological remains and recommendation to factor this into the design	1
General positive comment	23
General Positive	23
Impact on agricultural land/food production	1
Impact on agricultural land/food production	1
Other	2
Concern about sycamore seedlings in the wind and impact on neighbouring equine grazing land	1
Interested in volunteering/tree planting	1
Parking and access	25
Consider parking provision away from the village should parking in the village become an issue	1
Do not consider access to be an immediate issue	1
Guarantee that Church Lane will not be used for access by Forestry England vehicles and their contractors	2
Impact of parking on Church Lane. Narrow road, obstruction of property entrances, and access for emergency and other service/delivery vehicles	6
Include parking	8
Include space for 'casual parking' at the A15/Tillbridge Lane access	1
Negotiate with local transport planners to reintroduce bus service	1
Provide more information on how parking on Church Lane and the wider village will be monitored and addressed	3
Signpost vehicles via the tarmac road that leads to the grain silos at the bottom of the village	2
Paths and trails	22
Create low hillocks for children to play on	1
How will the PROW be kept accessible during the creation of the woodland?	1
Include a fun cycle track at the in the northeast corner of the site	1
Include bridleways / horse-riding facilities	3
Include off road cycle trails	11
Link new paths within the woodland boundary to existing PROWs	1

No safe cycling route to access the woodland	1
Provide a link from the southern area to the bridleway from North Carlton and South Carlton	1
Provide a link from the southern area to the bridleway running west from South Carlton	1
Provide a set of off-road mountain bike trails in the northeast quadrant of the site (between North Carlton, the B1398, the A1500 and the footpath running north out of North Carlton)	1
Upgrade footpath going north from North Carlton to bridleway status	1
Upgrade or at least provide permissive access along public footpath North Carlton 194 for horse riders and cyclists.	1
Tree planting and species	5
Concern if tree planting is proposed on the sloping ground (currently pasture) should there be any significant existing botanical interest	1
Ensure mixed species	0
Include more broadleaved species	1
Include some non-commercial trees - crab apples, native fruit trees	1
Planting in clumps	1
When will the first trees be planted	1
Wildlife and birds	7
Bird strike mitigation for existing powerline cups?	1
Include edge habitat on the external boundary to support nearby important bird species, such as grey partridge and corn bunting	1
Maximise nature recovery opportunities	1
Presence of curlew, yellowhammer, skylark, barn owls - what measures will be taken to protect these?	2
Undertake surveys to understand presence of important species in area of grassland adjacent to North Carlton village	2
Woodland design	5
Clarify areas of permanent woodland	1
Create and maintain appropriate open areas adjacent to watercourses	1
Include and maintain appropriate buffer zones along the edge of new and existing woodlands	1
Leave the field between North Carlton village and Middle Street unplanted for ecological value instead of for grassland	1
Observe recommended route protection area buffers for existing mature and veteran trees	1
Woodland design	1
Provide more information about what will be included in the parkland planting in historic Great Park	1
Woodland facilities	2
Include litterbins	1
Include toilets	1

Woodland maintenance	7
Forestry England responsibilities for regular dyke maintenance	1
Forestry England responsibilities for the strip of land that adjoins Havelock House?	1
How will fly tipping be addressed?	2
Maintenance of open ground to ensure tree safety issues next to the road on the northern boundary at North Carlton	1
Provide more specific information about protecting the woodland from Deer	1
Include locked barriers to deter fly tipping/trespassing	1

Appendix F: Stakeholders

We contacted the following stakeholders to advise them of the public consultation.

Elected representatives
Parliamentary MP for Gainsborough
Lincolnshire County Ward Councillors - Nettleham and Saxilby; Bardney & Cherry Willingham
West Lindsey District Ward Councillors - Saxilby and Ingleby
Lincolnshire County Council
Lead local flood authority
Lincolnshire Historic Environment Department
Historic Places Team
Lincolnshire County Archaeologist
Lincolnshire Public Rights of Way
Lincolnshire Highways
Parish Council
Langworth Group Parish Council
North Carlton Parish Council
Scampton Parish Council
Statutory body
Environment Agency
Historic England
Lincolnshire CPRE
Natural England
Utilities
National Grid
Open Reach
Upper Witham Internal Drainage Board
Witham Third District Drainage Board
West Lindsey Local Authority
Planning
Wildlife and special interest groups
Ashing Nature Reserve
Butterfly Conservation
East Mercia Rivers Trust
Greater Lincolnshire Nature Partnership
Lincolnshire Bat Group
Lincolnshire Deer Group
Lincolnshire Naturalist Union

Lincolnshire Wildlife Trust
National Bats Group
National Farmers Union
RSPB
Woodland Trust