

A new woodland at Mickleholme

Consultation report and our response to key issues raised

June 2025



Table of Contents

1. Executive summary	4
2. About the Consultation.....	4
2.1 Introduction	4
2.2 Objectives of the new woodland	5
2.3 Consultation purpose	5
2.4 Early engagement	5
2.5 Feedback to early engagement	6
2.6 Who we consulted.....	7
2.7 Dates and duration.....	7
2.8 What we asked	7
2.9 Methods of responding	7
2.9 Consultation materials and publicity	8
2.9.1 Consultation materials	8
2.9.2 Consultation activity.....	8
2.9.3 Analysis of consultation responses	8
3. About the responses	10
3.1 Overview of consultation responses.....	10
3.2 Consultation response by theme.....	10
3.3 Positive comments	11
3.4 Negative comments/concerns	11
3.5 Questions, comments and suggestions.....	12
3.6 Feedback from the consultation drop in event	13
4. Summary of consultation stakeholder responses.....	14
5. Our response to issues raised	16
Mickleholme - responses to issues raised.....	16
1. Communications and engagement	16
2. Parking and access	16
3. Woodland design.....	17
4. Paths and bridleways	18
5. Tree species and planting	19
6. Wildlife and birds.....	19
7. Woodland Maintenance	20
8. Other	20
Appendices	22

Appendix A: Our response to frequently asked questions - new woodlands at Mickleholme and Newball	22
1. Public access	22
2. Traffic and parking	22
3. Design, landscape and views.....	23
4. The trees we will plant	23
5. Establishing and managing the woodland	24
6. Protecting the new woodland from deer	24
7. Why are you planting agricultural land?.....	24
Appendix B: Consultation information	26
Appendix C: Consultation questionnaire	37
Appendix D: Letters/emails announcing the launch of the consultation (Mickleholme and Newball)	39
Appendix E: Code frame	43
Appendix F: Stakeholders contacted	45

1. Executive summary

Between 10th March and 6th April 2025, we held a consultation on proposals for the design of two new woodlands at Mickleholme, near Dunholme, and at Newball, next to the village of Langworth, in Lincolnshire. This report focuses on feedback we received and our response to issues raised for the new woodland at Mickleholme.

We received 26 responses to the consultation. Whilst we received many broadly supportive comments, some were negative, and others raised questions and made suggestions.

Our designs presented during the consultation were shaped by the initial feedback received during early engagement, as well as by further survey work.

After carefully considering the responses and further design work and in response to consultation feedback we will:

- Include an area of natural regeneration in our plans
- Engage with East Mercia Rivers Trust to scope options for including a wet woodland
- Undertake a walkover fungi survey

We are now finalising our designs and will shortly submit them to the Forestry Commission for regulatory review ahead of planting the new woodland.

This report outlines our approach to the consultation, a summary of the key issues and questions raised, and our response.

2. About the Consultation

2.1 Introduction

Forestry England is creating a new 196 hectare woodland on land we have bought at Mickleholme, near Dunholme in Lincolnshire. The land, which is former agricultural land, has been bought by Forestry England to provide a thriving woodland which will be planted with mixed conifer and broadleaf trees, specially selected to be resilient to future climate conditions.

The new woodland will be open to the public for people to explore and enjoy, whilst also being a valuable place for wildlife and producing sustainable timber for a greener economy.

The consultation invited views from the public and stakeholders on our proposals for the planting and design of the new woodland.

Feedback will help shape and inform our final designs which will be submitted to the Forestry Commission for regulatory review ahead of planting the new woodland.

2.2 Objectives of the new woodland

Our objectives for the new woodland are:

1. **Future forest resources and resilience:** plant a mix of trees for a lasting supply of sustainable timber
2. **Thriving habitats for wildlife:** increase connectivity by creating riparian woodland along Dunholme Beck and buffer and extend wildlife habitats to the east of Ashing Lane Nature Reserve
3. **Incorporate new seed production areas:** to help secure a future seed supply of climate resilient species
4. **Benefits for the wider landscape:** capture carbon, supporting net zero emissions targets
5. **Public access for health and wellbeing:** provide low-key recreation opportunities by improving access to the countryside for local residents and visitors and retain the existing public connection to Ashing Lane Nature Reserve

2.3 Consultation purpose

The aims of the consultation were to:

- Provide the public and our stakeholders with sufficient information about our proposals to allow them to give informed responses and suggestions
- Understand the reasons for any issues or concerns about our proposals
- Identify any issues we might not already be aware of
- Provide adequate time for people to respond
- Consider all responses carefully ahead of making any changes to our proposals.

2.4 Early engagement

Between 26 November 2024 and 17 December 2024, we sent letters to over 2000 addresses within a 1500 metre boundary of the proposed new woodland at Mickleholme. We also wrote to local elected representatives, including the local MP, ward members at Lincolnshire County Council and West Lindsey District Council, as well as the local Parish Councils advising them of the early engagement.

The letters included a map of the new woodland area and asked people to share their thoughts through an online survey about what we should consider as we develop our woodland designs.

We received 132 responses, including responses from Ashing Nature Reserve (Nettleham Woodland Trust), the Co Op, Lincolnshire Wildlife Trust, Butterfly Conservation (member), Lincolnshire Dormouse Group (volunteer), Ashing Lane Nature Reserve (volunteer) and the Environment Agency.

In addition to the feedback from the online survey, we held meetings with local landowners, including representatives from the Nettleham Woodland Trust, Lincolnshire Wildlife Trust, Lincolnshire Co-op and a nearby neighbour.

We also met with Natural England and the Environment Agency.

These meetings allowed us to share ideas and address potential concerns, helping us shape our design proposals and mitigate issues where possible.

2.5 Feedback to early engagement

Feedback to our early engagement included general positive comments as well as questions and concerns around the following themes:

- **Paths and access to the new woodland** - suggestions for wheelchair and pram friendly paths accessible all year round and suitable for walking, running and cycling, as well as the inclusion of additional paths and bridleways
- **Recreation and woodland facilities** - suggestions for woodland amenities such as picnic areas, seating and children's play areas
- **Wildlife, diversity and habitat** - suggestions for the inclusion of bird boxes, wildflowers and habitat for specific wildlife such as dormice
- **Traffic and parking** - suggestions for the inclusion of parking, with specific locations suggested, concern about potential increase in traffic on Ashing and safe access to the woodland onto the A46
- **Woodland design** - suggestions to include ponds, create a seasonal wetland, designate quiet areas for contemplation, provide dog friendly areas and rubbish bins
- **Community, education opportunities** - provide information signs, include an educational facility and engage with schools and universities, encourage volunteering
- **Tree species and planting** - recommendations for mixed woodland with a variety of trees and suggestions for the inclusion of specific tree species such as oak, lime, willow, hazel and fruit and nut trees
- **Water management and drainage** - suggestion that the adequate drainage is provided in the designs to allow for year round footpath navigation, concern about the maintenance of the dykes once the woodland is established
- **Fencing** - suggestions for the inclusion of deer fencing and fencing around the woodland to protect animals and children from the road
- **Other** - impact on mobile phone reception, woodland maintenance budget and concern about the impact on agricultural land and food security

Appendix A Sets out our response to the key themes and comments raised and how this feedback, together with further design and survey work and ongoing engagement with other stakeholders such as Natural England and the Environment

Agency, helped shape the design proposals we presented for public consultation in March 2025.

2.6 Who we consulted

Our consultation was open to anyone who lived or worked in the local area or had an interest in our proposals.

We focused our publicity on people living in the local area, as well as stakeholders from Lincolnshire County Council, West Lindsey District Council and Dunholme, Scothern and Bardney and Cherry Willingham Parish Councils. We also told the statutory stakeholders we consult with when creating a new woodland, including Natural England and the Environment Agency.

The list of stakeholders is included in **Appendix F**.

2.7 Dates and duration

The consultation was open for four weeks from 10th March to midnight on the 6th April 2025.

2.8 What we asked

The consultation survey, included an open question, inviting written feedback or questions about our proposed plans for the new woodland.

We also asked respondents to give their name and email address and, where applicable, supply details of the organisation on whose behalf they were responding.

The survey we published on the website, is included in **Appendix C**.

2.9 Methods of responding

Respondents to the consultation were invited to give their views between Monday 10th March to Sunday 6th April by:

- Completing the questionnaire included on our website at : <https://consult.forestryengland.uk/forest-districts/mickleholme-newball-grange>
- Giving comments by email to woodland.creation@forestryengland.uk
- Leaving comments at the public consultation drop in event on Thursday 20th March, 4.00 pm – 7.00pm; Dunholme Old School Community Centre, 8 Market Rasen Road, Dunholme.
- Feedback received at the drop in event is summarised separately in section 3.5 of this report.

2.9 Consultation materials and publicity

2.9.1 Consultation materials

We published consultation information about the new woodland on our website. This included:

- An overview of the new woodland creation programme and tree planting objectives
- A site appraisal of the existing site - with photographs and maps to give context
- An overview of the surveys undertaken, our objectives and principles, which have informed our design proposals for the new woodland
- An overview of planting types included in the proposals
- Visuals of how the new woodland might look soon after planting and, in the future
- Information on how to respond to the consultation.

2.9.2 Consultation activity

We publicised the consultation in the following ways:

- **Media release:** Distributed to local news outlets
- **Dedicated web page:** on the Forestry England website [New woodland at Mickleholme | Forestry England](#)
- **Citizen space consultation portal:** [New Woodlands - Mickleholme & Newball - Forestry Commission - Citizen Space](#)
- **Emails:** to local residents who previously responded to early engagement or asked to be notified of the consultation
- **Letters/emails** to immediate neighbours to raise awareness of the consultation and an offer of a meeting
- **Posters:** A poster publicising the consultation and drop in event was put up in several locations near the site. Posters were also shared with the local parish councils for inclusion on their noticeboards/websites
- **Consultation drop in event:** We held a drop in event at the Dunholme Old School Community Hall. The event showed the information already published on the website on large posters around the venue and Forestry England staff were on hand to talk about the proposals, answer questions or queries, and listen to any concerns from those attending.

Attendees were also encouraged to leave immediate feedback on the comments board and to respond to the consultation formally via the online survey, by email, or by completing a hard copy of the consultation questionnaire. We also asked attendees to leave their contact details if they would like to be kept updated about the proposals.

2.9.3 Analysis of consultation responses

Responses received to the consultation were analysed by assigning (or coding) the points made by each respondent to one or more codes within a code frame. Codes were organised by theme and separated into positive, negative and questions or suggestions. Each code reflects a point raised by multiple individuals in a variety

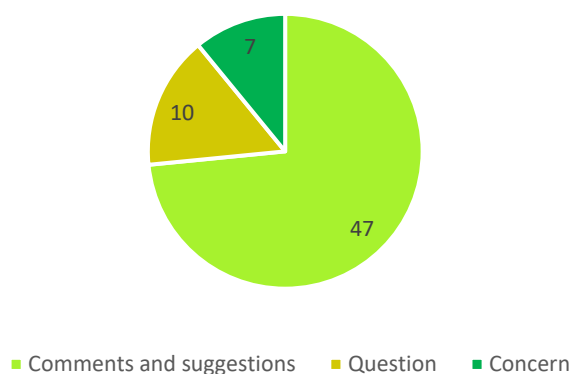
of ways. From this it was possible to count how many times the same or similar points had been raised by respondents.

3. About the responses

We received a total of 26 individual responses to the Mickleholme consultation including 9 from stakeholders (listed in **Appendix F**).

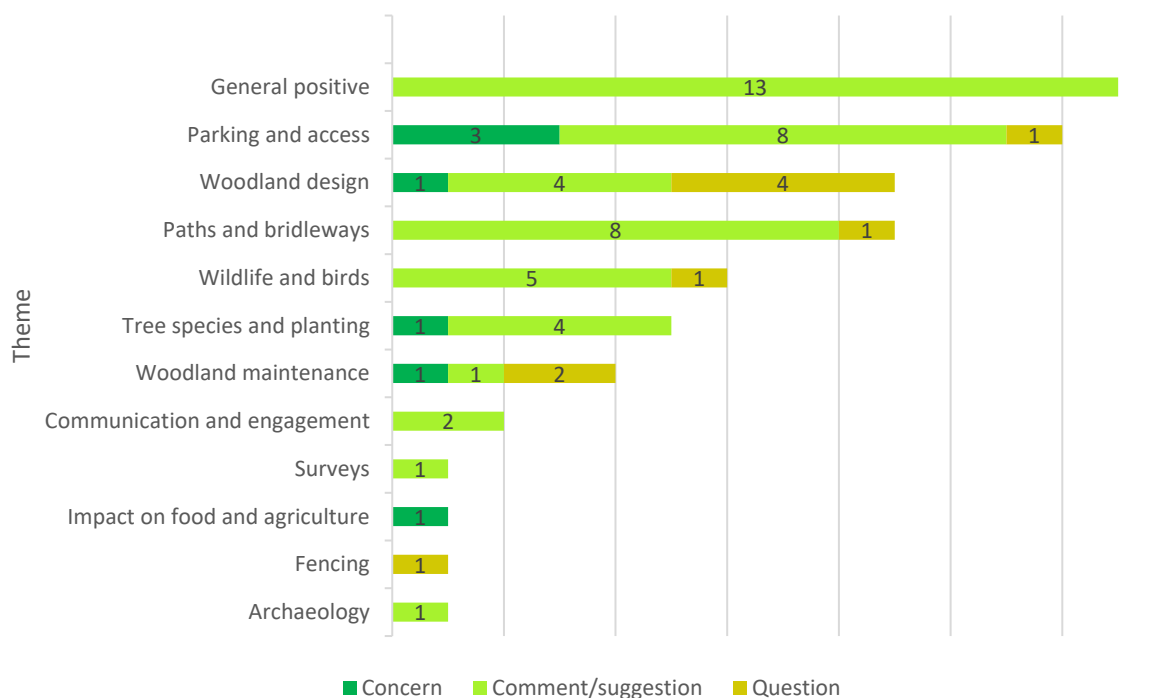
3.1 Overview of consultation responses

The responses were coded into 64 comments/suggestions, questions and concerns.



3.2 Consultation response by theme

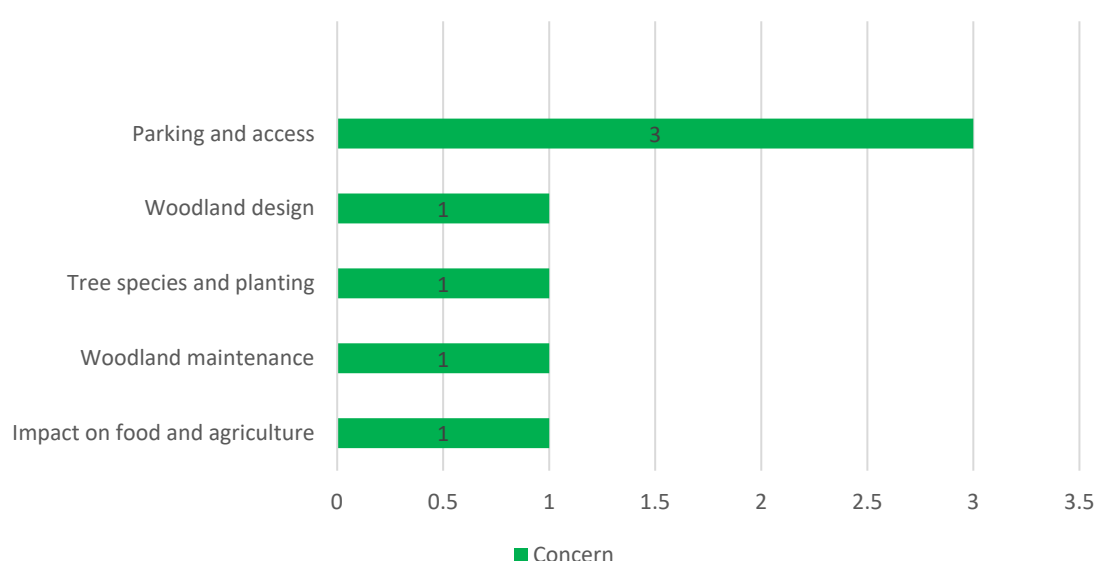
26 responses categorised into 64 comments by theme, concern, comment/suggestion question



3.3 Positive comments

We received 13 general supportive comments. These were general overarching positive comments such as 'I fully endorse the creation of any new woodland, particularly in this area of much arable farmland'; 'This seems an exceptionally good proposal'; 'Very informative, a really good project'; 'I welcome access to the new woodland with the new circular walks off the existing Public Rights Of Way'; 'Really excited and pleased about this proposal for a new woodland at Mickleholme'.

3.4 Negative comments/concerns



We received 7 negative comments/concerns, including:

Parking and access: People are concerned about the lack of parking, and the fast road that needs to be crossed to reach the woodland from Dunholme.

Woodland design: Concern about the loss of views across the Wolds, especially from along Dunholme Beck.

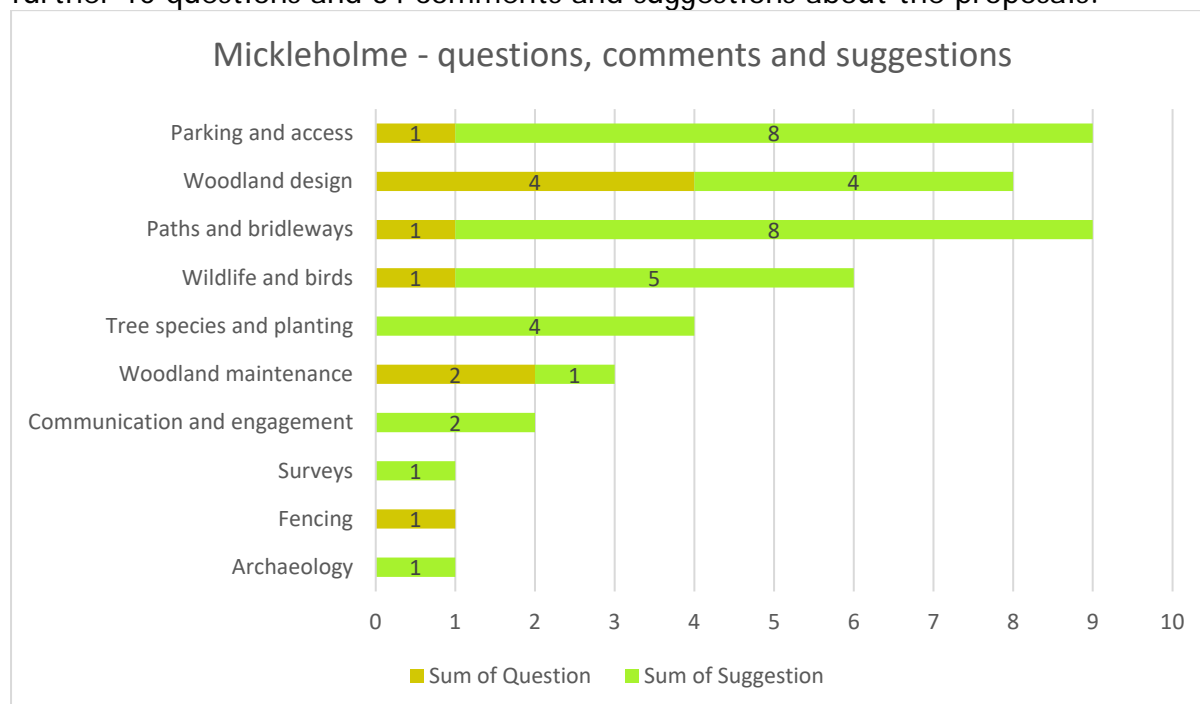
Tree species and planting: Concern about excessive riparian planting along the Dunholme Beck and the need to maintain the Beck's natural state and important corridors for wildlife along the watercourse.

Woodland maintenance: Concern about the maintenance of the drainage ditches and the risk of flooding on the A41

Impact on food and agriculture: Concern about the use of arable land for woodland and the impact on food security and agriculture.

3.5 Questions, comments and suggestions

In addition to the 13 general positive comments (see section 3.3), we received a further 10 questions and 34 comments and suggestions about the proposals.



Key questions, comments and suggestions included:

Parking and access: Include all weather parking for those unable to walk to the site; refurbish Ashing Lane and use the Ashing Lane Nature Reserve car park; provide informal parking for a few cars at access points.

Woodland design: Manage the planting to allow views of the Wolds view from Dunholme Beck; leave an area for regeneration; include a 10 metre buffer zone for existing mature trees; engage with the Environment Agency if planting is planned within 10 meters of the main rivers on the site (Barlings Eau or Dunholme Beck); will fire breaks and attenuation ponds be included in the woodland?

Paths and trails: Surface some of the paths to provide all season access; upgrade the footpath by Dunholme; upgrade or provide permissive access to Public Footpath Dunholme 171 and 1555 for horse riders and cyclists; improve the surface of Ashing Lane bridleway to the east and south of the woodland.

Wildlife and birds: Suggestions for the inclusion of planting species for specific butterfly (Brown Hairstreak, Purple Emperor, White Letter Hairstreak, and bird species (Yellowhammer).

Tree species and planting: Avoid excessive riparian planting alongside Dunholme Beck to maintain the Beck's natural state; maintain important corridors for wildlife along the water course; minimise land disturbance during planting near the rivers

that would create either sediment run-off or bare ground; Put greater emphasis on native species and use willows and alders in the planting.

The code frames summarising the comments received to the consultation are included in **Appendix E**. Our response to the key comments and questions raised is included in Section 5 of this report.

3.6 Feedback from the consultation drop in event

The drop in event held on 20th March at Dunholme Old School Community Centre exhibited the proposals for the new woodlands at both Mickleholme and at Newball. Consultation feedback specific to our proposals at Newball will be documented in a separate consultation report.

Over 45 people attended the event which showed the information already published on the website on large posters around the venue. Forestry England staff were on hand to talk about the proposals, answer questions or queries, and listen to any concerns from those attending.

Attendees were also encouraged to leave immediate feedback on the comments board. 24 sticky notes were left on the comments board - see summary of those comments specific to Mickleholme below. Attendees were also able to respond to the consultation formally by completing a paper copy of the survey, via the online survey or by email. We received 6 hard copy responses at the event.

We also asked attendees to leave their contact details if they would like to be kept updated about the proposals.

Comments on the boards reflect many of the comments received in formal consultation responses and included:

- Concern about planting land that could be used for agriculture
- Consider "slow the flow" on Dunholme Beck, Mickleholme
- Give more consideration to horse riders
- Allow horse riding around the perimeter of the woodland (no special surface is required - just somewhere safe to ride, away from traffic)
- Include a seasonal wetland adjoining Ashing Lane Nature Reserve south of barn owl tower
- Woodland planting would be better targeted in areas that flood
- Include access from PROW to south southwest of Mickleholme along the field edge to cut out tarmac to NR.

4. Summary of consultation stakeholder responses

We received formal consultation responses from the following stakeholders:

Organisation
British Horse Society
Butterfly Conservation (Lincolnshire Branch)
Lincolnshire Access Forum
Lincolnshire County Council - Historic Planning
Lincolnshire Wildlife Trust
Natural England
West Lindsey District Council -
Witham and Humber Drainage Board
Lincolnshire Trust for Nature Conservation

Stakeholder comments are reflected in the analysis and summarised below:

Butterfly Conservation (Lincolnshire Branch) - Suggestions for specific planting species including blackthorn for Brown Hairstreak; Sallows for Purple Emperor and Wych Elm for the White-letter Hairstreak

The British Horse Society - Concern about the lack of provision for horse riding and suggestion that new paths in the woodland should be shared with all user groups including horse riders. Specific suggestion for the upgrade or at least permissive access along public footpath Dunholme 171 and 155 for horse riders and cyclists to provide a circular route.

Lincolnshire County Council, Historic Places - Found no evidence of significant archaeological features and confirmed it is unlikely that the proposed tree planting/habitat creation will have a significant impact on any previously unknown archaeological features within the planting area.

West Lindsey District Council, Planning - Trees and Landscaping - No response specific to Mickleholme.

Lincolnshire Wildlife Trust - Supportive of the location of the woodland at Mickleholme as it is adjacent to the Ashing Lane nature reserve which will improve ecological networks by connecting different habitats. Concern about excessive riparian planting along the Dunholme Beck and suggestion not to include excessive planting in this location to maintain the Beck's natural state and keep important corridors for wildlife along the watercourse.

Lincolnshire Access Forum - Welcomes the creation of the new woodland. Suggestions for paths to ideally link to the existing PROWs, improvements to the surface of Ashing Lane, the bridleway surface along the southern edge of the woodland boundary, and all season surfacing for paths.

Natural England - Confirms the proposals should have no negative impact on any populations of non-woodland breeding wading birds and recommends that the project should maximise opportunities for nature recovery. Asks for clarity on the area of permanent woodland planting within the scheme and makes recommendations for buffers around existing mature and veteran trees. Includes recommendations for native species such as willows and alders in the planting, and that we should consult with the Environment Agency if planting is close to main rivers. To protect water quality, land disturbance near rivers should be minimised to prevent sediment run-off or bare ground. Suggestions for a walkover fungi survey, the retention of dense and willow scrub to support Yellowhammer populations, and consulting with the Lincolnshire Wildlife Trust.

Lincolnshire Trust for Nature Conservation - Reservations about plans for deer management, and questions about the inclusion of firebreaks and attenuation ponds in the woodland design.

Witham and Humber Drainage Board - Confirms the woodland site is within the Witham 3rd IDB boundary and set out the applicable requirements for Byelaw consents and maintenance strips for the Claybridge/Torrington Beck that cuts through the site. Also advised of the consent requirements for the watercourses on the site owned by Forestry England.

5. Our response to issues raised

We have considered all the feedback we received to the consultation, and our responses to the key issues raised are set out on the following pages.

We have grouped the issues into broad themes for a more readily understood overview of the issues. Many respondents made positive comments about the proposals, all of which have been noted. For conciseness, these have not been included.

Following further design work and in response to consultation feedback, we will:

- Include an area of natural regeneration in our plans
- Engage with East Mercia Rivers Trust to scope options for including a wet woodland
- Undertake a walkover fungi survey

Mickleholme - responses to issues raised.

1. Communications and engagement

1.1 Consult with Lincolnshire Wildlife trust

Lincolnshire Wildlife Trust were contacted as part of this consultation and have provided feedback

1.2 Will there be opportunities for volunteering

Forestry England works with many 'friends of' societies and community groups that help manage our woodlands. Whilst we currently have no dedicated resources to support regular volunteering opportunities on the site, we will monitor use and interest at our new woodland sites in the area as part of our wider engagement plans across the district. We will also liaise with local groups such as the Ashing Nature Reserve and the CoOp should opportunities arise.

2. Parking and access

2.1 Provide all weather parking for those unable to walk to the site and informal parking at access points for a few cars

The new woodland has been designed as a quiet area for people to enjoy, especially local residents. While there won't be a designated parking area, the woodland can be reached using the existing public footpaths. We expect most visitors to the woodland will visit on foot using the existing rights of way and public footpaths.

2.2 Refurbish and use Ashing Lane car park

Forestry England do not own Ashing Lane car park. We have no plans or funding to add visitor facilities or enhance parking at the new woodland. Local people can explore and enjoy the wood using various public paths, including one through the nature reserve. We don't expect visitors to come by car from far away and have no plans to add extra parking.

3. Woodland design

3.1 Manage the planting to allow views to the Wolds from Dunholme Beck

We have done a landscape and visual appraisal to guide our designs for the new woodland. The woodland views along the Beck will open to a wider vista beyond the woodland's edge.

3.2 Leave an area for nature regeneration

In response to feedback, we have left an area within the woodlands for natural colonisation - this area has now been marked on the designs.

3.3 Leave a 10 meter buffer for existing mature and veteran trees and engage with the Environment Agency if planting is planned within 10 meters of the main rivers on the site (Barlings Eau or Dunholme Beck)

These buffers have been included in the designs, and we have engaged with the Environment Agency early in the development of the project.

3.4 Will there be a dog exercise area?

Visitors will be welcome to walk their dogs in the new woodlands, but we won't include a specific area for dogs. Dog owners must be responsible and keep their pets under control in all the forests and woodland we care for, following signs and our Forest Dog Code.

3.5 Will fire breaks and attenuation ponds be included in the woodland?

Our proposed designs for the new woodland feature natural fire breaks such as dykes, riparian planting and wide grass tracks. Planting broadleaved trees and shrubs will also reduce the risk of fire.

3.6 Clarify the location of planned permanent areas for the scheme?

Broadleaf and mixed woodland corridors have been designed into the proposals, which together with coniferous woodland areas will connect surrounding woodland habitats. This will be a working woodland, as such cyclical felling will take place at a range of scales, providing a sustainable source of renewable materials while retaining functional links across the woodland. We have no plans to clear fell woodland corridors in their entirety.

3.7 Consider slow the flow for the Dunholme Beck

We anticipate that tree planting will slow the flow into the beck and will discuss options with the East Mercia Rivers Trust and other stakeholders as our plans for the riverside riparian areas take shape.

4. Paths and bridleways

4.1 Horse riding and cyclists: Suggestions for surfaced paths and requests to upgrade or provide permissive access to bridleway status for horse riders and cyclists.

We have no plans or resources to create new surfaced paths, public rights of way or bridleways.

Horse riders and cyclists are welcome to use the existing bridleway, but there is no plan to provide additional infrastructure within the new woodland for horse riders and cyclists.

In light of feedback, we are reviewing whether surfaced forestry tracks in our new woodland could also be used to extend access for cyclists and horse riders in the future where appropriate.

4.2 Improve surface of Ashing Lane Bridleway to the east and south of the development for horse riders and cyclists

Forestry England do not own or manage adjacent land and improving access in the wider area is not within the project's scope or funding. Lincolnshire County Council is primarily responsible for public rights of way, including bridleways and public footpaths and they were contacted as part of this consultation.

4.3 Include access from PROW to south southwest of Mickleholme along the field edge to cut out tarmac to the nature reserve.

We have no plans to include a formal access point at this location. However, once the new trees in the woodland are established, the land will be dedicated as open access for people to explore and enjoy on foot.

4.4 How will the PROW be kept available for users during the woodland planting?

We will carefully plan and co-ordinate the creation of the new woodland to minimise any impact on existing public rights of way. If the planting should temporarily obstruct the right of way, this would be clearly marked, and signage will inform users about the tree planting activities and any temporary changes to the pathway. We will comply with local regulations and guidelines regarding public rights of way and tree planting.

5. Tree species and planting

- 5.1 Avoid excessive riparian planting alongside Dunholme Beck to maintain the Beck's natural state and important corridors for wildlife along the watercourse**

A suitable buffer zone will be retained on the edges of Dunholme Beck. Any planting in close proximity to the main river will be lower density planting of native riparian species.

- 5.2 Minimise land disturbance during planting near the rivers that would create either sediment run-off or bare ground;**

All operations in riparian zones will follow UK Forestry Standard guidance on protecting the water environment. Tree planting will involve minimal ground disturbance and further reduce any risk of the release of sediment and chemical residues into these rivers.

- 5.3 Put a greater emphasis on native and deciduous trees and use native willows and alders in the planting**

Our design includes stands of native trees and areas of native riparian planting. The area is too large to exclude future potential for broadleaved timber production and as a result, red alder and Italian alder have also been included as future potential timber trees. The native species (aspen, black poplar and downy birch) will be concentrated closer to the riparian zone and nature reserve.

- 5.4 Include a seasonal wetland**

An area of seasonal wetland is included in the designs in the part of the site that is closest to the pond in Ashing Lane nature reserve. This area is naturally wet and will help expand the existing wetland habitat in the nature reserve.

6. Wildlife and birds

- 6.1 Include planting for specific species of butterflies (Brown Hairstreak; Whiteletter Hairstreak; and birds (Yellowhammer);**

Our objectives for this new woodland include creating diverse and resilient ecosystems that will benefit a broad spectrum of wildlife.

We plan to include a wide range of native trees and shrubs including broadleaved trees such as oak, alder, hornbeam and aspen which will benefit a wide variety of animals and vertebrates, including butterflies.

We will discuss potential options with the neighbouring Ashing nature reserve for buffering and extending wildlife habitats to the east of the nature reserve and along the brook.

6.2 Maximise nature recovery opportunities;

The site has several objectives, including creating more wildlife-friendly areas and improving and connecting them together in and around the new woodland. This includes letting nature take its course (natural colonisation), planting along streams (riparian planting), and includes a diverse mix of trees and plants, creating seasonal wetlands, and leaving open spaces.

7. Woodland Maintenance

7.1 Concern about the maintenance of the drainage ditches (risk of flooding) and hedges on the A41 and request to see the ditch and maintenance plan

Drainage on the public highway is the responsibility of the council highways department. We are already in discussions with them about our plans.

We will include buffer zones between the existing ditches and the woodland planting. Forestry England will conduct periodic ditch maintenance to maintain suitable conditions for tree growth and we will liaise with the Witham Third Internal Drainage Board to allow access for their general maintenance.

Ongoing maintenance of existing and new ditches will be included in our maintenance plan and woodland management will follow national guidance on protecting the water environment.

8. Other

8.1 Fencing: Will there be a fence along the boundary by the Beck

We have no plans to install continuous fencing along the Beck.

8.2 Impact on food and agriculture: Concern about loss of arable farming and impact on food security

Lincolnshire is currently the least wooded county in the East Midlands. The new woodlands will capture carbon, restore and connect habitats, enhance biodiversity, supply sustainable, homegrown timber and be wonderful places for people to enjoy.

The sites have been individually and carefully assessed so they are suitable for woodland creation and sensitive to the local landscape. Forestry England understands concerns around food security and keeping the best land in agricultural production. Our woodland creation programme seeks to avoid the most productive land ([grades 1 & 2](#)). The land at Mickleholme is graded at 3.

Forestry England's role is to manage and expand the nation's forests to ensure they are healthy and sustainable and benefit wildlife, people and

the economy. Timber is a crucial material for the UK's green economy helping a move away from higher-emission materials like steel, concrete, aluminium and bricks. It is renewable, sustainable, and has a lower carbon footprint, making it essential for environmentally friendly construction and manufacturing practices. Currently the UK imports over [80%](#) of its timber.

8.3 Surveys: Undertake a walkover fungi survey

No risk to fungi was identified in the preliminary ecological appraisal survey. We will undertake a walkover survey during the fungi season to determine whether there are any notable species present.

Appendices

Appendix A: Our response to frequently asked questions - new woodlands at Mickleholme and Newball

(included in the consultation information online and at the drop in events)

The questions and answers below, are responses to some of the themes we are frequently asked about when creating new woodlands:

1. Public access

The new woodlands will be open to the public. Once the woodlands are established, we will dedicate them under the Countryside and Rights of Way Act so people can explore the sites.

At Mickleholme, an existing public footpath runs west to east across Dunholme Beck and through the site, connecting the new woodland to Dunholme. A bridleway also runs west to east from the village, entering the southeastern part of the site. At Newball, we propose to include a new entrance off Bardney Road to the southwest to connect the existing bridleway from Hardy Gang Wood to the new woodland.

These public footpaths will give access for walkers to enjoy the new woodlands. A network of new unsurfaced grass routes will allow access for woodland maintenance and for people to enjoy the new woodland, connecting to existing woodlands, nature reserves and the wider countryside. There are no plans to create new surfaced trails or provide specific infrastructure for horse-riding or cycling.

Our draft designs include open spaces perfect for peaceful picnics and quiet areas for people to enjoy wildlife and nature. The woodlands are being designed as quiet areas and we have no plans to include new amenity or recreational facilities. Visitors will be welcome to walk their dogs in the new woodlands, but we won't put a fence around the whole woodland. Dog owners must be responsible and keep their pets under control in all the forests and woodland we care for, following signs and our Forest Dog Code.

2. Traffic and parking

The new woodlands have been designed for local people to enjoy; the woodlands can be accessed on foot, using the existing paths or the new routes we will create into the new woodlands and our proposals do not include car parking. We will consider signs to discourage inappropriate parking if necessary.

To manage the new woodlands, we need road access for our forestry vehicles. We plan to use the existing entrance off Market Rasen Road into the woodland at Mickleholme. At Newball, we will use the existing entrance and track off the A158 and are considering a second access off Bardney Road. We will add barriers close to these entrances to stop unauthorised access and antisocial behaviour.

3. Design, landscape and views

The new mixed woodland will enrich the landscape by boosting biodiversity and enhancing the natural environment. We have done surveys at each of the new woodland sites to tell us more about the plants, wildlife, archaeology and ecosystems.

These surveys, along with landscape and visual appraisals have guided our draft designs. For both woodlands, we will keep existing hedgerows to create diverse habitats for wildlife and connectivity beyond the woodland and to benefit biodiversity such as butterflies and birds.

By planting a range of trees and shrubs and creating open spaces with grass routes, the woodlands will connect to nearby woodlands, creating a tapestry of new natural quiet spaces for people to enjoy. Mickleholme will seamlessly link to Ashing Lane nature reserve. At Mickleholme we will also plant riparian (riverside) woodland along Dunholme Beck to create a habitat corridor along the watercourse and plant a seed stand to ensure a future supply of healthy tree seeds for our woodlands. Newball will connect to Newball Wood and Hardy Gang wood. The design for the new woodland will reflect the planting of these woods, helping to increase the habitat for the important butterflies already found here.

Our designs sensitively consider how close the new woodlands will be to our new neighbours. Where properties are close to our boundaries, we will include open space with wide-spaced shrub and broadleaved tree species to soften the views of the woodland edge and add colour and texture.

4. The trees we will plant

Our professional foresters carefully choose which trees to plant and where to plant them. They understand the local soils, how quickly the trees will grow, and the important habitats, species, and geographical features nearby. They also consider tree pests and diseases and future climate conditions to ensure our new woods are as healthy as possible. Creating diverse, resilient woods is important for timber, biodiversity and capturing carbon.

We propose to plant a range of species at the new woodlands. This would include mixtures of conifer and broadleaf trees at both sites. These might include Macedonian pine, Scots pine, Corsican pine, European larch, pedunculate oak, red oak, small leaved lime, rowan, and wild cherry. We will also plant a range of shrub species such as hawthorn, spindle, blackthorn and guelder rose

5. Establishing and managing the woodland

We aim to plant the new woodland in winter 25/26. Maintenance during the first five years is especially important to ensure the woodland's long-term success. The woodland will be managed by the Forestry England team and our contractors. Forestry England will develop a Forest Plan to make sure that future timber production is sustainable. As part of our ongoing management of the woodlands, we will begin to remove some trees after about 20-25 years - this will provide a sustainable supply of UK grown timber and help the woodlands thrive for many years to come.

6. Protecting the new woodland from deer

The UK is home to six species of deer. As their natural predators (bears, lynx and wolves) are no longer present in the UK, our wildlife management team have to manage the deer populations. Without predators or management, deer populations become unnaturally large, and their browsing can damage or kill young trees and wildlife habitats, reducing the resilience of the new woodland to the effects of climate change and lowering the carbon captured from the atmosphere.

We will use deer fencing to protect larger blocks of new planting and tree tubes in smaller areas. Rabbit and deer fencing will protect young trees from browsing, while tree tubes will safeguard smaller, widely spaced areas. After the woodland has become established, deer fencing and tree tubes will be removed and recycled where possible. This usually happens after approximately 10 years.

Forestry England is part of the [Deer Initiative](#), a partnership that promotes sustainable deer management in England and Wales. Our highly skilled wildlife management team will replace the role of Britain's missing predators by safely and humanely controlling deer populations in our woodlands, working to the highest standards. More information about how Forestry England manage deer can be found on our [website](#).

7. Why are you planting agricultural land?

Lincolnshire is currently the least wooded county in the East Midlands. The new woodlands will capture carbon, restore and connect habitats, enhance biodiversity, supply sustainable, homegrown timber and be wonderful places for people to enjoy.

The sites have been individually and carefully assessed so they are suitable for woodland creation and sensitive to the local landscape. Forestry England understands concerns around food security and keeping the best land in agricultural production. Our woodland creation programme seeks to avoid the most productive land ([grades 1 & 2](#)). The land at Mickleholme and Newball is graded at 3. Forestry England's role is to manage and expand the nation's forests to ensure they are healthy and sustainable and benefit wildlife, people and the economy.

Timber is a crucial material for the UK's green economy helping a move away from higher-emission materials like steel, concrete, aluminium and bricks. It is renewable, sustainable, and has a lower carbon footprint, making it essential for environmentally friendly construction and manufacturing practices. Currently the UK imports over [80%](#) of its timber.

Appendix B: Consultation information - Exhibition Boards

-to view online go to bit.ly/panelsmn



 **Forestry England**

Growing the nation's forests

Proposed new woodlands near Dunholme and Langworth in Lincolnshire

Forestry England are planting new woodlands to expand the nation's forests

We are planning new woodlands at Mickleholme near Dunholme and at Newball near Langworth, in Lincolnshire. We would like your comments on our initial ideas. Your input will help shape our final designs.

Working with public and private landowners, we're choosing the right places for woodlands to grow and flourish, carefully planting a mix of tree species to be resilient in our changing climate.

Every new woodland will have public access so you can explore and enjoy them to support your health and wellbeing.

They will be valuable places for wildlife, often linking other woods to provide green corridors for wildlife to move and thrive across the landscape.

In time, each new woodland will provide sustainable timber, contributing to a green economy. And they'll have wider environmental benefits including absorbing carbon, improving soil health and air quality, and water management.

Forestry England is creating these woodlands using the Department for Environment, Food & Rural Affairs (DEFRA) Nature for Climate Fund.

Scan the QR code to find out more:

forestryengland.uk

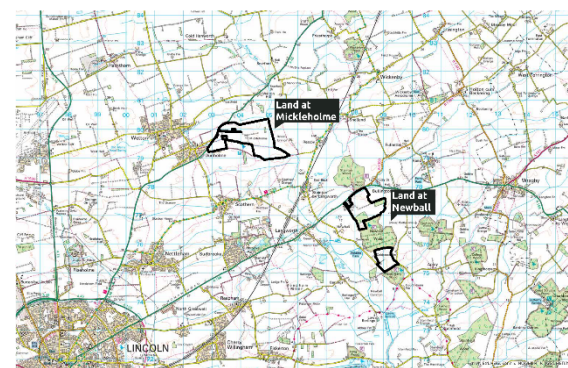




Site locations & context

The proposed new woodlands at Mickleholme and Newball are in Lincolnshire close to the villages of Dunholme and Langworth. The area falls within Natural England's National Character Area (NCA) 44 Central Lincolnshire Vale. The land at Newball provides an opportunity to connect two existing woodlands managed by Forestry England.

The area is a predominantly broad, low-lying, very gently undulating vale. Woodland cover is variable with little on the central and northern clay soils, and much more on the Coversands and Fen Edge Gravels; 8% of the NCA area is woodland. Land is used mostly as arable farmland with pasture on the heavier clays and around villages. In general, there is a regular pattern of medium to large-sized arable fields with hawthorn-dominant hedgerows enclosing most fields and with few hedgerow trees. The landscape is rich in medieval sites with remnant ridge and furrow, deserted medieval villages. (Natural England, 2013)



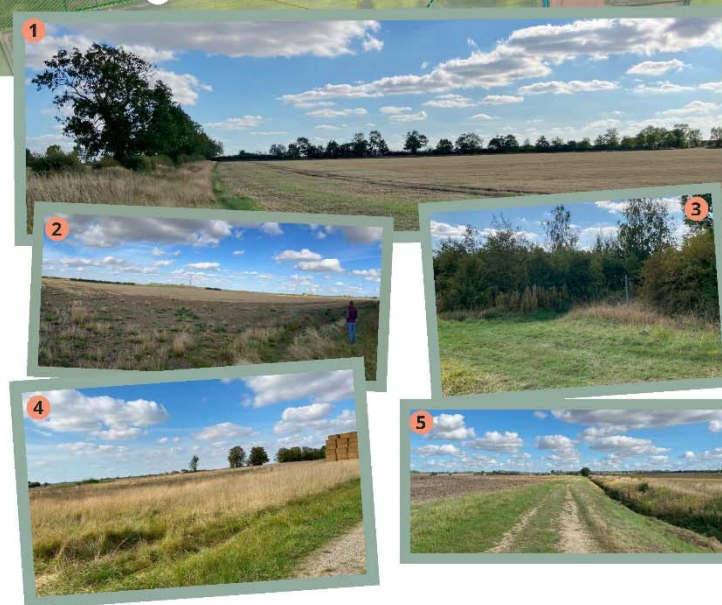


The existing site: Mickleholme

The site at Mickleholme is at the edge of Dunholme village, with Welton village a little to the north. The landscape is flat and expansive with Ashing Lane Nature Reserve, a place with different types of woods and meadows, directly south of the site. This reserve contrasts with the surrounding open arable farmland. Dunholme Beck flows west to east next to the public footpath

The site itself was mostly arable farmland, with large fields and some hedgerows. Field boundaries have deep ditches and grassy edges. There are long views across the proposed site, including from homes within and along the west and south boundaries. Several public rights of way go through the site, connecting to the nature reserve and the landscape beyond.

Photos: 1. View east from footpath along Dunholme Beck. 2. View northwest from Mickleholme Farm. 3. View east from public footpath near A46. 4. View of entrance to Ashing Lane Nature Reserve from within the site. 5. View northeast from sewage works track.



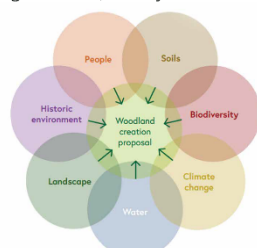


Tree species we could plant



How the new woodland at Mickleholme could look

We are designing the new woodland to benefit people, the economy, wildlife and the wider landscape (natural capital approach). Our design meets the UK Forestry Standard, which takes into account the following elements (Forestry Commission, 2021):



Detailed desktop surveys, site surveys and analysis will inform our design. This includes:

- Preliminary ecological appraisal
- Historic environment records
- Landscape and visual appraisal
- Local environment records
- Soil mapping
- Ecological site classification
- Utilities searches
- Responses to initial consultation

Objectives for the new woodland



Future forest resources and resilience: plant a mix of trees for a lasting supply of sustainable timber.



Thriving habitats for wildlife: increase connectivity by creating riparian woodland along Dunholme Beck and buffer and extend wildlife habitats to the east of Ashing Lane Nature Reserve.



Incorporate new seed production areas: help to secure a future seed supply of climate resilient species.



Benefits for the wider landscape: capture carbon, supporting net zero emissions targets.



Public access for health and wellbeing: provide low-key recreation opportunities by improving access to the countryside for local residents and visitors and retain the existing public connection to Ashing Lane Nature Reserve.



How the new woodlands could look

Our initial designs include proposals to:

- Plant coniferous and broadleaved trees together, with shrub species along some edges. This will add variety, colour and texture in the landscape.
- Create wildlife corridors by leaving open space next to hedgerows and adding some shrub planting at the edges of woodland for wildlife to thrive.
- Circular grass routes for woodland management and public access will connect to existing rights of way, which lead to surrounding woodland and villages.
- Include a mix of open space, native shrubs and trees at low density to keep some open views from nearby properties. This will also make the area look interesting throughout the year.

Artist's impressions:

Mickleholme public footpath view
how it looks now



How it could look
5 years after planting



How it could look
in 25 years



Newball track view
how it looks now



How it could look
5 years after planting



How it could look
in 25 years





New woodland at Mickleholme
Your views are important to us -
let us know what you think



Forestry England

Your views are important to us - let us know what you think

Responding to this consultation

We encourage you to submit your response online. You can view our plans and submit your views by completing the online feedback form at:

- <https://consult.forestryengland.uk/forest-districts/mickleholme-newball-grange>

- If you are unable to do this, you can respond via email at woodland.creation@forestryengland.uk

All views should be received by midnight on Sunday 6th April

What's next ?

- Review of consultation feedback
- Further design work to refine our proposals
- Application to the Forestry Commission for permission to create the new woodland
- Initial planting (Winter 2025/26)

Scan the QR code
to find out more:

forestryengland.uk



Event poster



NewWoodlands at MH & NBG

public consultation event on our proposed designs

20th March 4-7pm Dunholme Old School
Community Centre, Market Rasen Road, Dunho

Please drop in at any time during this period, to view the
proposed designs and speak to a member of our team.

For more information and to respond to the consultation
visit: bit.ly/consultMNG




The consultation closes at midnight Sunday 4th April 2025

You can also contact us at:
woodland.creation@forestryengland.uk


forestryengland.uk

Forestry England Website


<https://www.forestryengland.uk/article/new-woodland-mickleholme>



Visit - Things to do - Forestry and wildlife - Support us - Membership - About us - [Donate](#)



New woodland at Mickleholme



Growing the nation's forests

At Forestry England, we're expertly creating a new woodland on land we have purchased at Mickleholme, near Dunholme in Lincolnshire.

The new 196 hectare woodland will become a new green space for you to explore and enjoy, whilst also being a valuable habitat for wildlife and producing sustainable timber for a greener economy.

We'll carefully choose tree species that will both thrive at this new site now, and be resilient to future climate conditions as they grow and mature. The land will be planted with a mixture of broadleaf and conifer species, chosen to match local soil types. The landscape design will also incorporate open space for conservation and visual diversity.

Mickleholme public consultation

The draft design proposals for the new woodland are now complete and we invite your comments on them. You can comment online until Sunday 6 April via the button below.

We'll also be holding a public drop-in event in March - details can be found on the consultation page too.

[View the plans](#)

New woodlands in Lincolnshire

This new woodland is one of the many we're creating to grow the nation's forests, with support from the Nature for Climate Fund. In Lincolnshire alone, we're creating 854 hectares of new woodland at four sites across the county. Lincolnshire is currently the least wooded county in the East Midlands.

The other new woodlands we are creating in Lincolnshire are [Cadney](#), [North Carlton](#), and [Newball](#).

Frequently asked questions about the new woodland at Mickleholme

What types of trees will you plant?

We'll carefully plan in detail the trees that will be planted in the new woodland. Using a mix of tree and shrub species will help make the wood resilient to climate change and tree diseases, whilst also supporting a wider range of wildlife.

Some areas will be planted with a mix of trees, including broadleaved trees and conifers. This will complement the local landscape, provide seasonal colour and increase resilience.

When will works start and finish?

We're in the early stages of creating our designs for the new woodland. Public feedback and surveys will inform our detailed plans for the new woodland. Our aim is to create the new woodland over the next couple of years with initial planting beginning in winter 2025/26.

How do I stay in touch about the project?

We will post key updates on this webpage as the project progresses.

Consultation event images



Your views are important to us - let us know what you think



Responding to this consultation

We encourage you to submit your response online. You can view our plans and submit your views by completing the online feedback form at:

- <https://consult.forestryengland.uk/forest-districts/mickleholme-newball-grange>

- If you are unable to do this, you can respond via email at woodland.creation@forestryengland.uk

All views should be received by midnight on Sunday 6th April

What's next?

- Review of consultation feedback
- Further design work to refine our proposals
- Application to the Forestry Commission for permission to create the new woodland
- Initial planting (Winter 2025/26)

**Scan the QR code
to find out more:**

forestryengland.uk



Appendix C: Consultation questionnaire



Proposed new woodlands at Mickleholme & Newball

Overview

Forestry England would like to share with you our proposed plans for the new woodlands near Mickleholme and Newball

Why your views matter

Your feedback, as well as site surveys, has helped shape proposals showing how the new woodland could look. Forestry England value your comments and feedback on the proposal and welcome you to our consultation event.

Introduction

Thank you for taking part in this consultation on the design proposals for the new woodlands.

You can submit information without completing the name and email details, but if you choose to do so they will be held by Forestry England as per our privacy policy [Privacy Policy | Forestry England](https://www.forestryengland.uk/privacy) (<https://www.forestryengland.uk/privacy>)

1. What is your name?

2. What is your address?

3. What is your postcode?

4. Are you responding as:

- ☐ A local resident
☐ A local business
☐ A elected official
☐ Other stakeholder: Please name below

5. If you're responding on behalf of an organisation, what is the name of your organisation?

6. What is your e-mail address?

7. Would you like to be notified about future consultation on these new woodland proposals?

☐
☐

Yes (please make sure you have provided your e-mail address above)

No

Feedback - Please tick which site you are responding about

Mickleholme ☐ Newball ☐ Both ☐

8. Please use this space to add feedback or questions on the proposed plans

Return form to: FAO Forestry England Woodland Creation Team, Central England Sub-office Delamere Forest, ~~Linnere~~, Northwich, Cheshire, CW8 2JD

Appendix D: Letters/emails announcing the launch of the consultation (Mickleholme and Newball)

Email to neighbours

Dear neighbour

Public consultation on draft design proposals for new woodlands at Mickleholme and Newball

Thank you for your response to our early engagement survey about our new woodlands at Mickleholme and Newball.

I am now contacting you about the launch of a public consultation on our draft design proposals for the new woodlands.

These are available to view and comment upon until midnight on Sunday the 6th April:
<https://consult.forestryengland.uk/forest-districts/mickleholme-newball-grange>

While we continue with our detailed planning for the woodland, (survey and maintenance work is currently underway at the site), we are keen to hear your views on our initial design proposals. These have been informed by site surveys as well as the valuable insights gained from you and other local people late last year.

The new woodland will be a valuable place for timber production, wildlife, and people. It will have public access so you will be able to explore and enjoy it to support your health and wellbeing.

Public drop-in event

As part of the consultation, we will also be holding a drop-in event where you can view our proposed designs and talk to members of the Woodland Creation project team:

Thursday 20th March, 4.00 pm – 7.00pm
Dunholme Old School Community Centre, 8 Market Rasen Road, Dunholme, Lincoln,
Postcode: LN2 3QR

The new woodlands will be one of many that Forestry England is planting to increase tree planting across the UK.

Please feel free to share this email with any friends or neighbours who may also be interested in our plans.

Kind regards

The Woodland Creation Team

Responding to the consultation

The consultation will be open from Monday 10th March to Sunday 6th April.

Online: We encourage you submit your response online.

You can view our plans and submit your views here
: <https://consult.forestryengland.uk/forest-districts/mickleholme-newball-grange>

Or: bit.ly/consultMNG

If you are unable to do this, you can respond via email, typing 'Mickleholme consultation response' or 'Newball consultation response' in the header of your email and including your name, address, and postcode in your response.

Next steps

The consultation will close on Sunday 6th April. All responses will be summarised and included in a consultation report along with our response to the key issues raised and published on our website. Consultation feedback and further surveys will help shape the final design proposal we will submit to the Forestry Commission for regulatory review ahead of planting the new woodland.

The Woodland Creation Team

Forestry England

Email: woodland.creation@forestryengland.uk

www.forestryengland.uk



Email to Parish councils

Public consultation on draft design proposals for new woodlands at Mickleholme and Newball

Dear Parish Council

We recently contacted you about our proposals for new woodlands at Mickleholme, near Dunholme and Newball.

I am now writing to let you know about the launch of a public consultation on our draft design proposals for the new woodland. Full details are available to view on our website here: <https://consult.forestryengland.uk/forest-districts/mickleholme-newball-grange>

While we continue with our detailed planning for the woodlands, (survey and maintenance works are currently underway at the sites), we are keen to hear views on our initial design proposals.

Public drop-in event

As part of the consultation, we will also be holding a drop-in event where you can view our proposed designs and talk to members of the Woodland Creation project team:

Thursday 20th March, 4.00 pm – 7.00pm
Dunholme Old School Community Centre, 8 Market Rasen Road, Dunholme, Lincoln,
Postcode: LN2 3QR

I attach a PDF copy of a poster promoting the consultation and the drop-in event and would be grateful if you could include this on your parish website or notice boards where available. I also attach a copy of the email we have sent to those that responded to our early engagement to notifying them of the consultation.

Whilst we are encouraging all responses to be submitted online (please see below), should any of your parishioners be unable to access a computer, or attend the event, responses can also be submitted by post at the address below:

Woodland Creation team - Forestry England
620 Bristol Business Park
Coldharbour Lane
Bristol
BS16 1EJ

Kind regards

Woodland Creation
Forestry England
www.forestryengland.uk/woodland-creation

Responding to the consultation

The consultation will be open from Monday 10th March to Sunday 6th April.

Online: We encourage you submit your response online. You can view our plans and submit your views here : <https://consult.forestryengland.uk/forest-districts/mickleholme-newball-grange>

If you are unable to do this, you can respond via email, typing the 'name of the woodland consultation response' in the header of your email and including your name, address, and postcode in your response.

Next steps

The consultation will close on 6th April. All responses will be summarised and included in a consultation report along with our response to the key issues raised and published on our website. Consultation feedback and further surveys will help shape the final design proposal we will submit to the Forestry Commission for regulatory review ahead of planting the new woodland.

Appendix E: Code frame

Theme	Total
Archaeology	1
No significant archaeological features that would prevent the woodland going ahead	1
Communication and engagement	2
Consult with Lincolnshire Wildlife Trust	1
Volunteering	1
General positive	13
General positive	13
Parking and access	12
Ashing Lane car park requires refurbishing	2
Fast road to cross	2
Forestry England should take responsibility for managing an increase in cars to the area	1
Improve surface of Ashing Lane	0
Parking	3
Provide all weather parking for those unable to walk to the site	1
Provide informal parking at access points for a few cars	1
Use Ashing Lane car park	2
Paths and bridleways	9
Consider upgrading the footpath by Dunholme Beck to bridleway status to give more benefit to horse and cycle riders.	2
How will the PROW be kept available for users during the woodland planting?	1
Improve surface of Ashing Lane Bridleway to the east and south of the development for Horse riders and cyclists	2
Link all user paths within the site boundary to existing PROWs	1
Surface some of the paths to allow all season access	2
Upgrade or provide permissive access to public footpath Dunholme 171 and 1555 for horse riders and cyclists	1
Tree species and planting	5
Minimise land disturbance during planting near the rivers that would create either sediment run-off or bare ground.	1
Plant as many deciduous trees as possible	0
Put greater emphasis on native species	1
Use native willows and alders in the planting	1
Avoid excessive riparian planting alongside Dunholme Beck to maintain the Beck's natural state and maintain important corridors for wildlife along the watercourse	2
Wildlife and birds	6
Include blackthorn for Brown Hairstreak and Purple Emperor Butterflies	1

Include Wych Elm for White Letter Hairstreak	1
Maximise Nature Recovery opportunities	1
Retain dense scrub and willow scrub for populations of Yellowhammer	1
The proposal should have no negative impact on any nearby populations of non-woodland breeding wading birds	1
Will Nettleham Trust be involved	1
Woodland design	9
Are there plans for attenuation ponds?	1
Buffer recommendations of 10 meters for existing mature and veteran trees on the site	1
Clarify the location of planned permanent areas of the scheme	1
Dog exercise area	1
Engage with the environment agency if planting is planned within 10 meters of the main rivers 10m of Barlings Eau or Dunholme Beck	1
Leave an area for nature regeneration	1
Loss of views across the Wolds, especially along Dunholme Beck	1
Maintain appropriate buffer zones along the edge of the new and existing woodlands	0
Manage the planting to allow glimpse of the Wolds view from Dunholme Beck	1
Will the site include fire breaks?	1
Woodland maintenance	4
Maintenance of drainage ditches on A41 and concern about flooding	1
Maintenance of hedges on A41	1
Watercourses are within Witham 3IDB boundary and must comply with Byelaw consent and include a maintenance strip	1
Would like to see drainage and hedge maintenance plan	1
Fencing	1
Will there be a fence along the boundary by the Beck	1
Impact on food and agriculture	1
Loss of arable farming and impact on food security	1
Surveys	1
Undertake a walkover fungi survey	1
Total comments	64

Appendix F: Stakeholders contacted

Stakeholder
Elected representative
Parliamentary MP for Gainsborough
Lincolnshire County Ward Councillors - Bardney and Willingham
West Lindsey District Ward Councillors -Dunholme and Welton Ward
Land owners
Lincolnshire co op
Blankney Estate
Lincolnshire County Council
Lead local flood authority
Lincolnshire Historic Environment Records
Mid Lincolnshire Local Access Forum
Parish Council
Dunholme Parish Council
Langworth Group
Scothern Parish Council
Snelland Parish Council
Statutory body
Environment Agency
Historic England
Lincolnshire CPRE
Natural England
Utilities
National Grid
Witham Third District Drainage Board
West Lindsey Local Authority
Planning
Wildlife and special interest groups
Butterfly Conservation
East Mercia Rivers Trust
Greater Lincolnshire Nature Partnership
Lincolnshire Bat Group
Lincolnshire Deer Group
Lincolnshire Naturalist Union
Lincolnshire Wildlife Trust
National Farmers Union
RSPB
Woodland Trust