



Forestry England

Hondslough Wood

Consultation report
and our response to
issues raised.

16 November 2023



Table of Contents

1. Executive summary	3
2. About the Consultation	3
2.1 Introduction	3
2.2 Purpose	4
2.3 Who we consulted	4
2.4 Dates and duration	4
2.5 What we asked	4
2.6 Methods of responding	4
2.7 Consultation materials and publicity	5
2.7.1 Consultation Materials	5
2.7.2 Consultation activity	5
2.7.3 Analysis of consultation responses	6
3. About the responses	6
3.1 Overview of consultation responses	6
3.2 Positive comments	6
3.3 Negative comments	6
3.4 Questions & Suggestions	7
3.5 Feedback from the consultation drop in event	7
3.6 Feedback from the resident walkabout - Hondslough lane	8
4. Our response to issues raised	8
Appendix A: Consultation information	15
Appendix B: Consultation questionnaire	23
Appendix C: Code frame	24
Appendix D: Letters/emails announcing the launch of the consultation	25

1. Executive summary

Between 2nd October and 22nd October 2023, we held a consultation on proposals for the designs of a new 40-hectare woodland at Hondslough Farm, near Delamere Forest.

We received 91 responses to the consultation which had 148 comments. Whilst we received many broadly supportive comments, some were negative, and others raised questions and made suggestions.

After carefully considering the responses, we are making the following changes and amendments to our proposals for the new woodland as follows:

- We will incorporate fruit trees into the planting
- We will have a gate at the Forestry England operational access off Hondslough Lane rather than a standard forestry barrier
- We are liaising with Cheshire West and Chester Council about improved signage

Over the coming weeks, we will be finalising our designs to reflect these changes, ahead of submitting an application to the Forestry Commission for permission to create the woodland.

This report outlines our approach to the consultation, a summary of the key issues and questions raised, and our response.

2. About the Consultation

2.1 Introduction

Forestry England is creating a new 40-hectare woodland on land we have bought at the northern edge of Delamere Forest. The land, which is currently farmland, has been bought from Cheshire West and Chester Council to provide a thriving woodland which will be planted with mixed conifer and broadleaf trees, specially selected to be resilient to future climate conditions. The new woodland will be a 'Coronation Wood' to celebrate the Coronation of His Majesty King Charles III.

The woodland will be managed as part of the existing 753-hectare Delamere Forest which welcomes 750,000 visitors each year to enjoy the walking and cycling trails and other recreation opportunities.

The new woodland will have public access to enable visitors to Delamere Forest to explore a quieter forest landscape for people to enjoy in every season and expand existing wildlife habitats to provide greater benefits for diversity.

The consultation invited views from the public and stakeholders on our proposals for the planting and design of the new woodland.

Feedback will help shape and inform our final designs which will be submitted to the Forestry Commission for permission to create the new woodland.

2.2 Purpose

The aims of the consultation were to:

- Provide the public and our stakeholders with sufficient information about our proposals to allow them to give informed responses and suggestions
- Understand the reasons for any issues or concerns about our proposals
- Identify any issues we might not already be aware of
- Provide adequate time for people to respond
- Consider all responses carefully ahead of making any changes to our proposals

2.3 Who we consulted

Our consultation was open to anyone who lived or worked in the local area or had an interest in our proposals. We focused our publicity on people living in or visiting the Delamere area, businesses in the vicinity of the proposed woodland as well as stakeholders in Cheshire West and Chester Council. We also told the statutory stakeholders we consult with when creating a new woodland. The list of stakeholders is included in Appendix E.

2.4 Dates and duration

The consultation was open for 3 weeks from 2nd October to midnight on the 22nd of October 2023.

2.5 What we asked

The consultation survey included one open question inviting written feedback or questions about our proposed plans for the new woodland.

We also asked respondents to give their name and email address and, where applicable, supply details of the organisation on whose behalf they were responding.

The survey we published on the website, is included in Appendix B.

2.6 Methods of responding

Respondents to the consultation were invited to give their views between the 2nd and 22nd October by:

- Completing the questionnaire included on our website at [Hondslough Wood - Delamere Forest Extension - Forestry Commission England - Citizen Space \(forestryengland.uk\)](https://www.forestryengland.uk/hondslough-wood-delamere-forest-extension-citizen-space)
- Giving comments by email to Woodland.creation@forestryengland.co.uk
- Leaving comments or suggestions at the public information event at the Delamere Forest visitor centre on 10th October 2023 (summarised separately in section 3.5 of this report).

2.7 Consultation materials and publicity

2.7.1 Consultation Materials

We published consultation information about the new woodland on our website. This included:

- An overview of the new woodland creation programme and Government tree planting objectives
- A site appraisal of the existing site - with photographs and maps to give context
- An overview of the surveys undertaken, our objectives and principles, that have informed our design proposals for the new woodland
- An overview of planting types included in the proposals
- Visuals of how the new woodland might look soon after planting and, in the future,
- Information on how to respond to the consultation.

2.7.2 Consultation activity

We publicised the consultation in the following ways:

- **Media release:** Distributed to local news outlets
- **Dedicated web page:** on the Forestry England website
- **Letters** to local residents on Hondslough Lane
- **Letters/emails** to stakeholders and over 1000 members of Delamere Forest
- **Posters:** A poster publicising the consultation was put up on a public right of way on site and in public areas around Delamere Forest. We also shared the poster with the Parish Councils of Manley, Norley and Oakmere & Delamere)
- **Social media:** A social media event was created on Facebook to publicise the event - seen by over 2000 people. (See Appendix D)
- **Consultation drop in event:** We held a drop in event at the Delamere Forest visitor centre on 10th October 2023. The event showed the information already published on the website on large posters around the venue and Forestry England staff were on hand to talk about the proposals, answer questions or queries, and listen to any concerns from those attending. Attendees were also encouraged to leave immediate feedback on the comments board and to respond to the consultation formally via the online survey or by email. We also asked attendees to leave their contact details if they would like to be kept updated about the proposals.
- **Meetings with local stakeholders:** We sent a letter inviting the owners or occupiers of properties on Hondslough Lane to attend a 'walk around' event of the site so as we could explain the proposals and listen to questions and concerns.

2.7.3 Analysis of consultation responses

Responses received to the consultation by completing the on-line survey or by email, were analysed by assigning (or coding) the points made by each respondent to one or more codes within a code frame. Codes were organised by theme and separated into positive, negative and questions or suggestions. Each code reflects a point raised by multiple individuals in a variety of ways. From this it was possible to count how many times the same or similar points had been raised by respondents.

3. About the responses

We received 91 responses to the consultation including 3 from stakeholders (listed in Appendix E). 82 of the responses were received via the online survey, and 9 responses by email.

3.1 Overview of consultation responses

All responses to the consultation were coded into 148 comments, questions, and suggestions.

Comment	Number	Percentage
Positive comment	68	46%
Negative comment	21	14%
Question	21	14%
Suggestion	38	26%
Total	148	100%

3.2 Positive comments

Of the 68 positive comments most were overarching general comments such as ‘excellent idea’, ‘the proposed comments look very interesting and exciting’, ‘I think it’s a fantastic idea’. Other positive comments were about the consultation, the new woodland, the tree planting and choice, and the inclusion of a tree nursery (the tree stand area).

3.3 Negative comments

Of the 21 negative comments, almost half (9) were about safety, traffic and access to the forest via Hondslough Lane. Other comments reflected concerns about the potential expansion of Forest Holidays into the new woodland, the lack of parking in the area, the loss of land to use for crops and the potential impact of the proposals on local wildlife.

3.4 Questions & Suggestions

We received 21 questions and 38 suggestions about the proposals.

The top themes included:

- Is there/provide cycling, pedestrian and horse-riding access to the new woodland via Hondslough Lane
- Include barriers, fencing and signage to make it clear that there is no public access to the forest along Hondslough Lane
- Is there/include parking in the proposals
- Will this be a potential new access route for Forest Holidays
- Will there be/include disabled access in the new woodland
- Suggestions and questions about tree choices and planting

The code frame summarising the comments received to the consultation are included in **Appendix C**.

3.5 Feedback from the consultation drop in event

Over 25 people attended the drop in consultation event. 18 comments were posted on the feedback boards. These are summarised as follows:

- Include an orchard (2)
- Improve access to the new woodland with new parking provision (2)
- A request to see the mapping undertaken or permission to conduct mapping on the site
- Include the testing of species for climate change to add value to the wider forest
- Include community planting for the new woodland
- A positive comment about our intention not to use tree shelters
- Concern about the potential use of the site by Forest Holidays
- A positive comment about Forest Holidays 'we don't mind the chalets'.

Key discussion topics included:

- Why is there no bridleway along Hondslough Lane?
- Concerns about access and parking
- Questions about public access along Hondslough Lane
- Loss of farmland to the new woodland
- Equestrian access to the forest to access quieter areas
- Car parking for disabled access
- Relocation of the gate to allow access from Hondslough through the first access gate
- Questions about wildlife and requests for sight of the project's preliminary ecological assessment

3.6 Feedback from the resident walkabout - Hondslough lane

Forestry England staff met with people living on Hondslough Lane for a ‘walk around’ event of the site so as we could explain the proposals and listen to questions and concerns. The event was attended by 7 people on 9th and by 6 people at a further event on the 13th of October (3 of those people had also attended the meeting on the 9th).

Key issues discussed included:

- Biosecurity relating to the seed stand
- Carbon sequestration
- Loss of agricultural land
- Drainage
- Vehicle access to the new woodland
- Vehicle speeds on Hondslough Lane
- The potential for gates, barriers and improved signage
- Use of fencing contractors
- Driveway maintenance
- Harvesting and vehicles used to transport timber
- Parking on the private road and vehicles turning in driveways
- Dogs/sheep worrying
- Future development plans for Forest Holidays

4. Our response to issues raised

We have considered all the feedback we received to the consultation, and our responses to the key issues raised are set out in the tables on the following pages.

We have grouped the issues into broad themes for a more readily understood overview of the issues. Many respondents made positive comments about the proposals, all of which have been noted. For conciseness, these have not been included in the tables.

Following further design work and in response to consultation feedback, we have made the following changes to our proposed designs for the new woodland:

- We will incorporate fruit trees into the planting
- We will have a gate at the Forestry England operational access off Hondslough Lane rather than a standard forestry barrier
- We are liaising with Cheshire West and Chester Council about improved signage

	Theme	Question or Issue	Our response
1.	Access to the new woodland	Will the new woodland be accessible via Hondslough Lane by foot, bike or horseback?	<p>Public access to the new woodland will be from the network of existing paths within the existing forest. These can be used by pedestrians, horses, and cycles. Hondslough Lane is a private road owned by the council. There is no legal right of access for the public along Hondslough Lane.</p> <p>We are working with the Cheshire West and Chester Council (CWAC) to consider options to mitigate issues related to the use of the private lane by current and future visitors to Delamere Forest, Forest Holidays, and Hondslough Wood (for example improved signage).</p>
2.	Access to the new woodland	Concerns about safety, traffic, and access to the new woodland via Hondslough Lane	<p>There is no public right of access to the new woodland via Hondslough Lane.</p> <p>Forestry England have a right of access along the lane. Forestry vehicles, and staff and contractors responsible for forest maintenance, will access the new woodland along Hondslough Lane and through one of the existing gates that have previously been used for access by agricultural vehicles.</p> <p>We would use agricultural and light goods vehicles to plant and establish the new woodland. When it comes to harvesting the trees, we would need to use larger forestry machinery. This will be in some years' time. Staff, and the contractors working on our behalf, are committed to meeting exemplary health and safety standards to protect those visiting our forests and the many volunteers and staff that work to maintain them.</p> <p>In response to safety concerns raised by residents living on Hondslough Lane, we will work with Forestry England staff and contractors using the lane, to address potential issues such as</p>

	Theme	Question or Issue	Our response
			parking (this will be on land owned by us); speed limits; management of mud/debris etc.
3.	Access to the new woodland	Concerns that Hondslough Lane will become a new access point for Forest Holiday	Access to Forest Holidays is via the existing driveway off Ashton Road. Hondslough Wood will be accessed by the existing paths within Delamere Forest. There is no new public access along Hondslough Lane.
4.	Access to the new woodland	Questions about the accessibility of the new woodland	Delamere Forest already provides a range of accessible gentle and easy-going trails for all abilities, with waymarked trails that are generally flat and even with no stiles or steps and level access to amenities and picnic areas. The paths within the new woodland are generally wide grass rides that are mown regularly. There will be no stiles or steps and the area is relatively flat.
5.	Access to the new woodland	Addition of footpath/bridleway linking the settlement of Kingsley via the common side crossroads	There are no current plans to explore added access to the forest from this direction as part of the proposals for the new Hondslough woodland.
6.	Access to the new woodland	Improvements to the existing public access paths	There is no plan to improve the paths within the existing woodland as part of this project.
7.	Access to the new woodland	Provision of more parking	The new woodland will allow for access on foot from Delamere Forest. There will be no added parking introduced for the new woodland.
8.	Access to the new woodland	Provision of a barrier at the start of the hard track into the site to	The design and installation of the hard track into the site will include mitigations to dissuade parking in the entrance.

	Theme	Question or Issue	Our response
		dissuade parking in the entrance	
9.	Access to the new woodland	Inclusion of FE signs at each end of Houndslough Lane to say Private Road, No parking	We are working with the Cheshire West and Chester Council (CWAC) to consider options to mitigate issues related to the use of the private lane by current and future visitors to Delamere Forest, Forest Holidays, and Hondsloough Wood (for example improved signage)
10.	Use of the new woodland	Concerns that the new woodland will be used for Forest Holidays in the future	The land at Hondsloough has been bought to create new woodland. There are no plans to expand Forest Holidays into this area of land.
9.	Use of the new woodland	Will there be the opportunity to include birdwatching?	The site will be publicly accessible and therefore people are welcome to use it for birdwatching, but no specific birdwatching infrastructure is planned.
10.	Use of the new woodland	Will this woodland be a quiet space? Are there plans to introduce new recreational facilities such as bike paths, camping and other facilities?	The new Hondsloough Woods will have public access to allow visitors to explore a quieter forest landscape with mainly grass rides for people to enjoy nature and to walk, cycle and horse ride. There are no plans to include camping, play facilities or other formal recreation infrastructure.
11.	Tree planting and choice	Concern about the location of the tree nursery (the tree stand area) and the height of the new trees	The trees planted in the seed stand area are managed for seed production and collection, much like a fruit orchard. It is in the south-east of the site. The trees will be kept topped to about 6ft and gradually thinned out to wider spacing. This makes the trees easier to pick from and helps produce more seed.
12.	Tree planting and choice	Tree choice	The planting proposals for the new woodland, include a mixture of broadleaf and conifer trees to include species such as Scots

	Theme	Question or Issue	Our response
			pine, Douglas fir, sessile oak, sweet chestnut, wild cherry, rowan, and alder as well as others. These species have been chosen with consideration for their resilience to future climate conditions.
13.	Tree planting and choice	Impact on farmland and crops	<p>The land at Hondslough Wood is agricultural land classification grade 3 and is not considered the best and most versatile agricultural land for food production.</p> <p>Forestry England are creating new woodlands which will capture carbon, restore, and connect habitats, enhance biodiversity, and supply a sustainable source of homegrown timber. Sites are individually appraised across several criteria to assess their suitability for woodland creation. This appraisal considers their existing land use, and we target lower quality or less productive land to create new woodlands.</p>
14.	Tree planting and choice	Inclusion of fruit trees	We are proposing to include fruit trees in the wood meadow area to the northern edge of the woodland where it is closest to Delamere Forest.
15.	Impact on wildlife	Plans to introduce new wildlife into the new woodland and concerns about the impact of the new woodland on wildlife?	<p>Tree species have been carefully chosen to provide benefits to wildlife found on site during surveys, fruiting shrubs and trees have been included as a food source for birds and as a nectar source for pollinating insects.</p> <p>As part of the plan, we are also creating some shallow wetland scrapes which will, hopefully be used by waders, and other aquatic invertebrates.</p> <p>The existing hedgerows will be kept supporting the population of hedgerow-nesting birds.</p>
16.	Other	Concern about the impact of the	We are aware of the location of this drain, and will undertake a site visit to consider what mitigations, if any, are needed

	Theme	Question or Issue	Our response
		woodland on the land drains	
17.	Other	Dogs off leads and the potential impact on wildlife and Livestock. Better fencing of the new woodland to prevent sheep worrying	<p>We encourage all dog owners to be responsible and keep their pets under control, following signage and following the Forest Dog Code.</p> <p>Signage is currently in place along the existing forest boundary, especially where livestock are nearby, requesting dog owners to keep their dogs under control. We will contact the Rural Crime Team and the CWAC Public Rights of Way Officer about the potential issues and mitigations. Fencing will be in place to protect the trees while they establish, and hedges and fences will be used to delineate boundaries.</p> <p>In response to issues raised, we will also have a gate at the Forestry England operational access off Hondslough Lane rather than a standard forestry barrier. This will help to minimise the number of unleashed dogs running onto the lane.</p>
18.	Other	Do you have planning permission to change this very suitable agricultural land to woodland?	<p>Private and public landowners, including Forestry England, do not require planning permission to create new woodlands. Instead, we are required to undertake a forestry Environmental Assessment to check whether the proposed project is likely to have a significant effect on the environment. We are currently preparing our submission for this assessment, and the work we have undertaken to date, such as land and wildlife surveys, contact with stakeholders such as the local authority and Natural England, as well as consulting with local residents and special interest groups, will form part of our submission. Further details are available on the Government website: Environmental Impact Assessments for woodland - GOV.UK (www.gov.uk)</p>

	Theme	Question or Issue	Our response
			<p>Projects that are considered as likely to have a significant effect on the environment will require consent from the Forestry Commission before they can go ahead.</p> <p>The land at Hondslough Wood is Agricultural land classification grade 3 and is not considered the best and most versatile agricultural land for food production.</p>

Appendix A: Consultation information

Exhibition boards and information available to view and download on the website



We are planting new woodlands to expand the nation's forests we care for

We are working on designs for a new woodland in Cheshire, which will join on to Delamere Forest, and would like your comments and suggestions on our initial proposals. Your feedback will inform our final designs for the woodland.

Working with public and private landowners, we're choosing the right places for woodlands to grow and flourish, carefully planting a mix of tree species to be resilient in our changing climate.

Every new woodland will have public access so you can explore and enjoy them to support your health and wellbeing. They will be valuable places for wildlife,

often linking other woods to provide green corridors for wildlife to move and thrive across the landscape.

Our plans are part of the government's commitment to increasing tree planting rates across the UK to 30,000 hectares per year by the end of this parliament, supported by the Nature for Climate Fund. We aim to plant at least 2,000 hectares of new, high-quality, predominantly broadleaved woodlands across England.

In time, each new woodland will provide sustainable timber, contributing to a green economy. And they'll have wider environmental benefits including absorbing carbon, improving soil health and air quality, and combating flooding.

Scan the QR code to find out more:

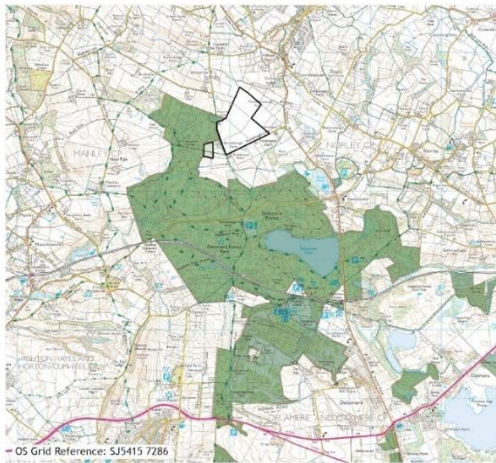


forestryengland.uk



The proposed woodland creation site at Hondslough Farm is in Cheshire, between Northwich and Chester, next to the northeastern boundary of Delamere Forest. Forestry England is buying the land from Cheshire West and Chester Council and plan to create a thriving woodland.

The site is approximately 40 hectares of grade 3 agricultural land and will join on to Delamere Forest to become part of the area managed under Forestry England's *Delamere Forest Plan* - the sustainable management plan for the forest.



OS Grid Reference: SJ5415 7286
Insets: woodland creation site boundary next to Delamere Forest



View north from Old Pale viewpoint, Delamere Forest. Hondslough Farm visible in distance.



Walking and cycling trails in Delamere Forest

The site is in Natural England's National Character Area 62: Cheshire Sandstone Ridge. The sandstone ridge has outcrops rising over 100m above sea level and overlooks the surrounding Cheshire plain.

The large-scale landscape has a strong mosaic of woodland: areas of wet woodland, ancient woodland, some post-medieval conifer plantations and sustainably managed broadleaf and conifer plantations; along with small-scale agriculture: grassland, arable and pasture. The medieval Royal Forest of Delamere once covered a vast area of Cheshire.

The landscape also has areas of glacial meres and mosses, including a number which are part of the internationally important Northwest Midlands Meres and Mosses Ramsar site, including Oak Mere, Abbots Moss and Hatch Mere.



Blakemere Moss

There are many historic features in the forest the most notable being Eddisbury Hill Fort which is an Iron Age Hill Fort built in 100-200BC and protected as an Scheduled Ancient Monument.

Over 750,000 people come to Delamere Forest every year to enjoy the beautiful woodland and wide variety of open spaces, wetland and grassland habitats that are linked by a good network of forest trails. The forest also produces around 4,000 cubic metres of sustainably grown timber each year, carefully managed alongside the recreation opportunities and biodiversity.

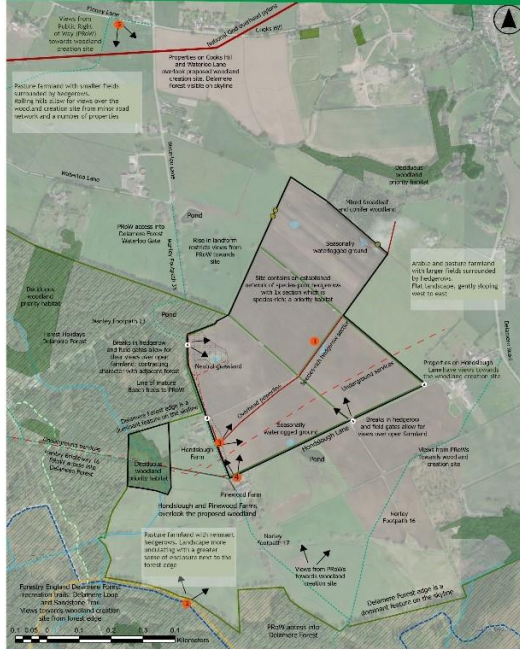


Photo viewpoint 1: View northwest from proposed woodland creation site, towards Delamore Forest and properties on Waterloo Lane and Finney Lane*



Photo viewpoint 2: View north towards Hondslough and Pierwood farms, from Sandstone Trail/Delamore Loop within Delamore Forest*



Photo viewpoint 3: View east from public footpath at western site boundary, towards properties on Hondslough Lane*



Photo viewpoint 4: View east from public footpath adjacent to Pierwood farm, Hondslough Lane*

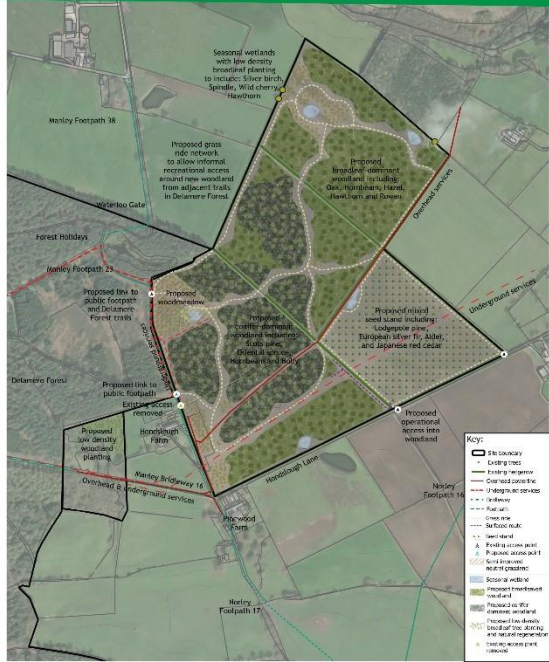


Photo viewpoint 5: View southeast towards proposed woodland creation site, from Finney Lane public right-of-way*

Key:

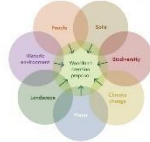
Forestry England landholding	Whitewool trail	Iroquois woodland - Priority habitat
Site boundary	Delamore loop	Seasonally waterlogged ground
Existing trees	Home Halloway trail	Photo viewpoints
Existing hedgerow	Hondslough trail	
Overhead powerline	Footway	
Underground services	Footpath	

*Dashed line indicates site boundary



How we design new woodlands

We are designing the new woodland with a natural capital approach, with benefits for people, wildlife and the wider landscape. Our designs meet the UK Forestry Standard, which takes into account the following elements (Forestry Commission, 2021):



Detailed desktop surveys, site surveys and analysis have informed our design, this research includes:

- Preliminary ecological appraisal
- Breeding bird survey
- Historic environment records
- Landscape appraisal
- Local environmental records
- Soil mapping
- Ecological site classification
- Climate matching tools
- Utilities searches

Objectives for the new woodland

Public access for health and wellbeing: add to the opportunities for quiet recreation at Delamere Forest.

Thriving habitats for wildlife: enhance existing habitats and create more habitats for wildlife, connecting into Delamere Forest woodland and wetland.

Benefits for the wider landscape: capturing carbon, helping mitigate soil erosion and flooding, and improving soil health and air quality.

Future forest resources and resilience: extend our productive woodland and create a seed stand to produce seed for future woodland creation.

Design principles

The design includes mixed broadleaved and conifer woodland, areas of open space, wide rides, shrubs, woodmeadow and seasonal wetlands to provide a rich mosaic of habitats, supporting a range of wildlife including birds, insects and amphibians.

The design takes into consideration the unique sense of place of the site. The scale of woodland blocks complements surrounding woodland and is appropriate for the scale of the landscape.

Tree species have been chosen to reflect possible climate changes, so that the woodland will survive in the warmer and drier climate, with greater resilience against new pests and diseases.

The grass ride network will connect with Delamere Forest to the west, giving visitors the opportunity to explore this new quieter forest landscape.

One area will be planted as a seed stand, an area managed to grow trees and collect their seeds which will supply Forestry England's nursery at Lobsack, close to Delamere.

Planting types





Existing landscape

The drone image (left) shows what the landscape looks like now with open arable and pasture farmland, next to Delamere Forest to the northwest, and smaller private woodland to the northeast. Hondslough and Pinewood farms are visible in the foreground.

The viewpoint illustrated below shows the existing scene from the Sandstone Trail in Delamere Forest. Hondslough and Pinewood farms are visible in the foreground, with Delamere Forest to the skyline in the west.



Viewpoint location: Sandstone Trail



What the new woodland might look like

The bird's-eye view (left) gives an idea of what the new woodland could look like. To the southwestern edge is low-density planting, next to Pinewood and Hondslough farmhouses. The conifer seed stand is visible to the east. The design includes mixed broadleaved and conifer woodland, areas of open space, wide rides, shrubs, wood meadow and seasonal wetlands to provide a rich mosaic of habitats, supporting a range of wildlife including birds, insects and amphibians.

The viewpoint illustrated below, from the Sandstone Trail, shows the change to the skyline, more than 20 years after planting. Low-density planting and broadleaved woodland is visible next to Hondslough and Pinewood farms.





Forestry England

Your views are important to us - let us know what you think

Responding to this consultation

Please let us have your views by:

- Completing the online feedback form at: consult.forestryengland.uk/forest-districts/hondslough-farm-delamere-forest-extension
- Emailing us at: woodland.creation@forestryengland.uk
- All views should be received by 11.59pm on 22nd October, 2023

What's next ?

- Review of consultation feedback
- Further design work to refine our proposals
- Application to the Forestry Commission for permission to create the new woodland
- Initial planting (Winter 2023)
- Final planting (Winter 2024)

Scan the QR code
to find out more:

forestryengland.uk





Existing landscape

The viewpoint above illustrates the view from Manley Footpath 23 which is between Delamere Forest and the proposed new woodland.

Today there is an open view across gently sloping arable farmland, with Delamere Forest and nearby privately-owned woodland on the skyline to the south and east.

Many of the field boundaries are hedgerows of varying condition. Hedgerows allow wildlife to move around more easily and provide food.



Viewpoint location: where Manley Footpath 23 meets the new woodland

How the woodland might look soon after planting

This will become the main public access link between the new woodland and Delamere Forest, via Manley Footpath 23. You will be able to walk around the site using a network of wide grass rides.

We found an area of neutral grassland in our ecological survey which is important for wildlife so we will manage it as woodmeadow, with open glades, low-density planting and natural regeneration.

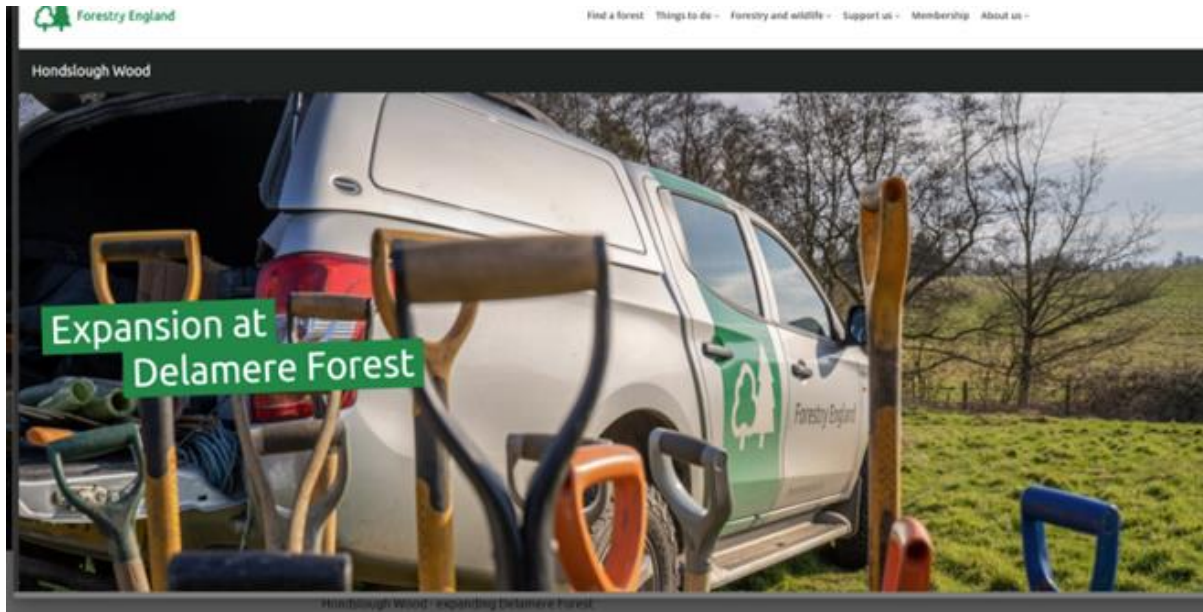
We will keep the hedgerows and have spaces between them and the new woodland planting, this will allow the hedges to flourish and benefit wildlife.

How the woodland might look when established

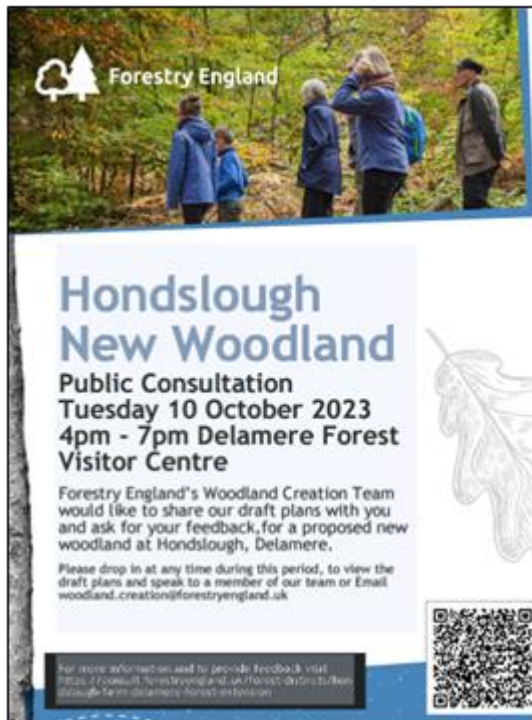
The open character of the site will change slowly over a long time. The glades of the woodmeadow will maintain a sense of openness, and a network of wide rides will allow you to see across the site.

The proposed woodland will become visible on the skyline. Mixes of conifer and broadleaved planting will create a resilient woodland which is diverse and more interesting to experience.

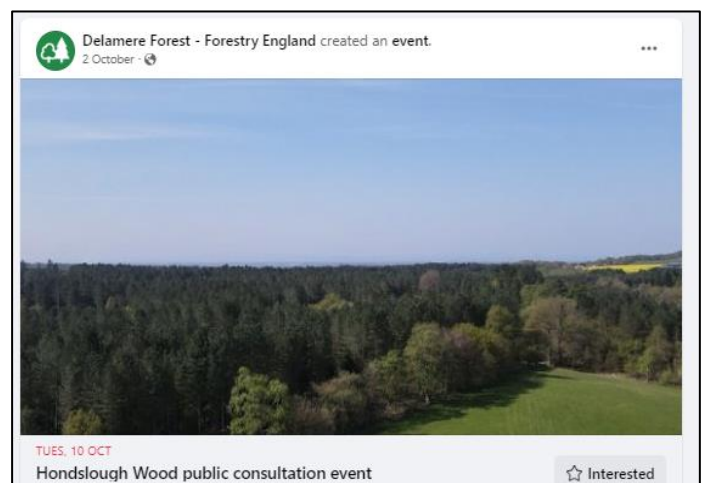
Website



Poster



Social Media



Appendix B: Consultation questionnaire

Hondslough Wood – Delamere Forest Extension

Overview

Forestry England's Woodland Creation Team would like to share with you and invite your comment on our exciting plans for a proposed new woodland as an extension to Delamere Forest.

Please see the plans for the woodland in the 'related' documents below.

Why your views matter

We value your comments and feedback on the plans and hope to see you at our Consultation Event.

Introduction

Thank you for taking part in this consultation for Hondslough Farm – Delamere Forest Extension.

You can submit information without completing the name and email details but if you chose to do so they will be held by Forestry England as per our [Privacy Policy | Forestry England](https://www.forestryengland.uk/privacy) <<https://www.forestryengland.uk/privacy>>

1 What is your name?

Name

2 What is your email address?

Email

3 What is your organisation?

Organisation

Feedback

4 Please use this space to add feedback or questions on the proposed plans

Appendix C: Code frame for consultation responses

Summary of consultation comments received from the online survey and by email	Negative	Positive	Question	Suggestion	Total
General positive comment		62			62
Cycling, pedestrian and horse-riding access from Hondslough Lane	1	0	1	13	15
Forest holidays	5	2	2	1	10
Safety, traffic and access to the forest via Hondslough lane	9	0	1	0	10
Include vehicle barrier/fencing/signage on Hondslough Lane	0	0	0	7	7
Parking	2	0	3	1	6
Tree choice and planting	0	1	2	2	5
Disabled provision	0	0	1	4	5
Impact on farmland and crops	1	0	2	0	3
Tree nursery (the tree stand area)	0	2	1	0	3
Alternative/additional entrance to forest	0	0	1	2	3
Consultation	1	1	1	0	3
Concern about cyclists	1	0	0	2	3
Horse-riding facilities in the forest	0	0	2	0	2
Consents/risk assessment	0	0	2	0	2
Impact on wildlife	1	0	1	0	2
Quiet space in the forest	0	0	0	2	2
Include recreational activities - biking, camping	0	0	1	0	1
Include birdwatching	0	0	0	1	1
Land drain concerns	0	0	0	1	1
Include in neighbourhood plan	0	0	0	1	1
Clear hedge cuttings	0	0	0	1	1
Overall totals	21	68	21	38	148

Appendix D: Letters/emails announcing the launch of the consultation

Letter to Local Residents

2nd October 2023

Central England Forest District
Forestry England
Delamere Office
Linmere
Cheshire
CW8 2JD

forestryengland.uk

Forest Management Director
Paddy Harrop

Dear resident

I am writing to inform you that Forestry England is buying land close to your property for the purposes of new woodland creation.

Forestry England manages and cares for the nation's 1,500 woods and forests. As England's largest land manager, we shape landscapes and enhance forests for people to enjoy, wildlife to flourish and businesses to grow. The extension to Delamere Forest will be one of many new woodlands Forestry England is planting which support Government targets to increase tree planting across the UK.

The new woodland will be a 'Coronation Wood' to celebrate the Coronation of His Majesty King Charles III. The woodland will cover 40 hectares and join up with the existing Delamere Forest, which Forestry England already manages.

Planning and planting a brand-new woodland is an exciting moment and we're currently doing the detailed work of deciding the right mix of tree species which will flourish in the soil and climate conditions here. We're looking carefully at the many different benefits this woodland will bring in the decades ahead including how the new area can boost biodiversity and help nature recovery across the wider landscape.

We would like to invite the most local residents to discuss our proposal and gather your feedback at a site visit on the 9th October from 4-6pm. If you wish to attend please email woodland.creation@forestryengland.uk.

You will be able to view and comment on the proposals using the link or QR code below between 2nd -22nd October.

<https://consult.forestryengland.uk/forest-districts/hondslough-farm-delamere-forest-extension/>



We will also be hosting a public event 4-7pm 10th October at the Delamere visitor centre where residents and organisations can look at our proposals, provide feedback and get involved as the woodland plans take shape. Following this, formal approval will be sought from the Forestry Commission for the new planting scheme.

If you have any questions relating to the new woodland, please contact our project team by emailing: woodland.creation@forestryengland.uk

Yours sincerely

Paddy Harrop

Paddy Harrop
Forest Management Director (Central England)

Letter to Delamere Local Forest Partners

I am writing to inform you that Forestry England is buying additional land adjacent to Delamere Forest.

Forestry England manages and cares for the nation's 1,500 woods and forests. As England's largest land manager, we shape landscapes and enhance forests for people to enjoy, wildlife to flourish and businesses to grow. The extension to Delamere Forest will be one of many new woodlands Forestry England is planting which support Government targets to increase tree planting across the UK.

The new woodland will be a 'Coronation Wood' to celebrate the Coronation of His Majesty King Charles III. The woodland will cover 40 hectares and join up with the existing Delamere Forest, which Forestry England already manages.

Planning and planting a brand-new woodland is an exciting moment and we're currently doing the detailed work of deciding the right mix of tree species which will flourish in the soil and climate conditions here. We're looking carefully at the many different benefits this woodland will bring in the decades ahead including how the new area can boost biodiversity and help nature recovery across the wider landscape.

You will be able to view and comment on the proposals using the link or QR code below between 2nd and 22nd October.

<https://consult.forestryengland.uk/forest-districts/hondslough-farm-delamere-forest-extension/>



We will also invite residents and organisations to a public event 4-7pm 10th October at the Delamere visitor centre to look at our proposals, provide feedback and get involved as the woodland plans take shape. Following this, formal approval will be sought from the Forestry Commission for the new planting scheme.

We are really excited about this opportunity to create more woodland. We do not anticipate this creating disturbance to your businesses, and it will increase the area in which visitors can explore. We are happy to answer any questions you may have.

If you have any questions relating to the new woodland, please contact our project team by emailing: woodland.creation@forestryengland.uk

Letter to Parish Council

2nd October 2023

Central England Forest District
Forestry England
Delamere Office
Linmere
Cheshire
CW8 2JD

forestryengland.uk

Forest Management Director
Paddy Harrop

Dear Clerk

I am writing to inform you that Forestry England is buying land within your parish for the purposes of new woodland creation.

Forestry England manages and cares for the nation's 1,500 woods and forests. As England's largest land manager, we shape landscapes and enhance forests for people to enjoy, wildlife to flourish and businesses to grow. The extension to Delamere Forest will be one of many new woodlands Forestry England is planting which support Government targets to increase tree planting across the UK.

The new woodland will be a 'Coronation Wood' to celebrate the Coronation of His Majesty King Charles III. The woodland will cover 40 hectares and join up with the existing Delamere Forest, which Forestry England already manages.

Planning and planting a brand-new woodland is an exciting moment and we're currently doing the detailed work of deciding the right mix of tree species which will flourish in the soil and climate conditions here. We're looking carefully at the many different benefits this woodland will bring in the decades ahead including how the new area can boost biodiversity and help nature recovery across the wider landscape.

You will be able to view and comment on the proposals using the link or QR code below between 2nd October to 22nd October.

<https://consult.forestryengland.uk/forest-districts/hondslough-farm-delamere-forest-extension/>



We will also invite residents and organisations to a public event 4-7pm 10th October at the Delamere visitor centre to look at our proposals, provide feedback and get involved as the woodland plans take shape. Following this, formal approval will be sought from the Forestry Commission for the new planting scheme.

I have also attached a poster which can be shared on the parish council websites and notice board so interested parties can view the plans and comments.

If you have any questions relating to the new woodland, please contact our project team by emailing: woodland.creation@forestryengland.uk

Yours sincerely

Paddy Harrop

Paddy Harrop
Forest Management Director (Central England)

Letter to stakeholders

2nd October 2023

Central England Forest District
Forestry England
Delamere Office
Linmere
Cheshire
CW8 2JD

forestryengland.uk

Forest Management Director
Paddy Harrop

Dear xxx

I am writing to inform you that Forestry England is buying additional land adjacent to Delamere Forest.

Forestry England manages and cares for the nation's 1,500 woods and forests. As England's largest land manager, we shape landscapes and enhance forests for people to enjoy, wildlife to flourish and businesses to grow. The extension to Delamere Forest will be one of many new woodlands Forestry England is planting which support Government targets to increase tree planting across the UK.

The new woodland will be a 'Coronation Wood' to celebrate the Coronation of His Majesty King Charles III. The woodland will cover 40 hectares and join up with the existing Delamere Forest, which Forestry England already manages.

Planning and planting a brand-new woodland is an exciting moment and we're currently doing the detailed work of deciding the right mix of tree species which will flourish in the soil and climate conditions here. We're looking carefully at the many different benefits this woodland will bring in the decades ahead including how the new area can boost biodiversity and help nature recovery across the wider landscape.

You will be able to view and comment on the proposals using the link or QR code below between 2nd October and 22nd October.

- <https://consult.forestryengland.uk/forest-districts/hondslough-farm-delamere-forest-extension/>



We will also invite residents and organisations to a public event 4-7pm 10th October at the Delamere visitor centre to look at our proposals, provide feedback and get involved as the woodland plans take shape. Following this, formal approval will be sought from the Forestry Commission for the new planting scheme.

If you have any questions relating to the new woodland, please contact our project team by emailing: woodland.creation@forestryengland.uk

Yours sincerely

Paddy Harrop

Paddy Harrop
Forest Management Director (Central England)

Email sent to members of Delamere Forest



Expansion at Delamere Forest | Share your views

We are delighted to announce the creation of a [new 40-hectare woodland](#) which will join on to Delamere Forest. In addition to providing people with more space to enjoy, this forest will create a flourishing habitat for wildlife, as well as sustainable supply of timber.

[Hondslough Wood](#) at the northern edge of [Delamere Forest](#) is currently farmland. We are buying the land from Cheshire West and Chester Council to create a thriving woodland which will be planted with mixed conifer and broadleaf trees, specially selected to be resilient to future climate conditions.

The new area of woodland will have public access to enable you to explore a quieter forest landscape.

Tell us what you think

As a member, we value your thoughts and would like to invite you to give your views and feedback on [the woodland design](#) through a public consultation event taking place next Tuesday 10 October at [Delamere visitor centre](#) from 4pm to 7pm.

You can also [submit your views online](#). The online consultation will close on Sunday 22 October.

[Share your thoughts](#)

Appendix E: Stakeholders

Stakeholders contacted
Natural England
Local Wildlife Trust
Sandstone Ridge Trust
Mersey Forest
Mid Cheshire Bridleway groups
Delamere Forest business partners
Manley Parish Council
Norley Parish Council
Oakmere and Delamere Parish Council
Utilities
Forest Holidays
Delamere Business Partners