

## Central Forest District

### Location Map

Delamere Forest including its 8 satellite woodlands and 2 tree nurseries is situated in central Cheshire some 12km east of Chester and within an hours drive south from Liverpool and Manchester.

The main block of woodlands lie in the Cheshire Sandstone Ridge National Character Area (NCA) which is surrounded on all sides by the Shropshire, Cheshire and Staffordshire Plain which includes the Hopyards and Uplands woodland.

Over 750,000 visitors come to Delamere forest each year to enjoy the beautiful woodland and wide variety of open spaces, wetland and grassland habitats that are linked by a good network of forest roads and tracks. The woodlands generates over £2 million pounds to the local economy.

  
**Forestry Commission**  
England

1:100,000

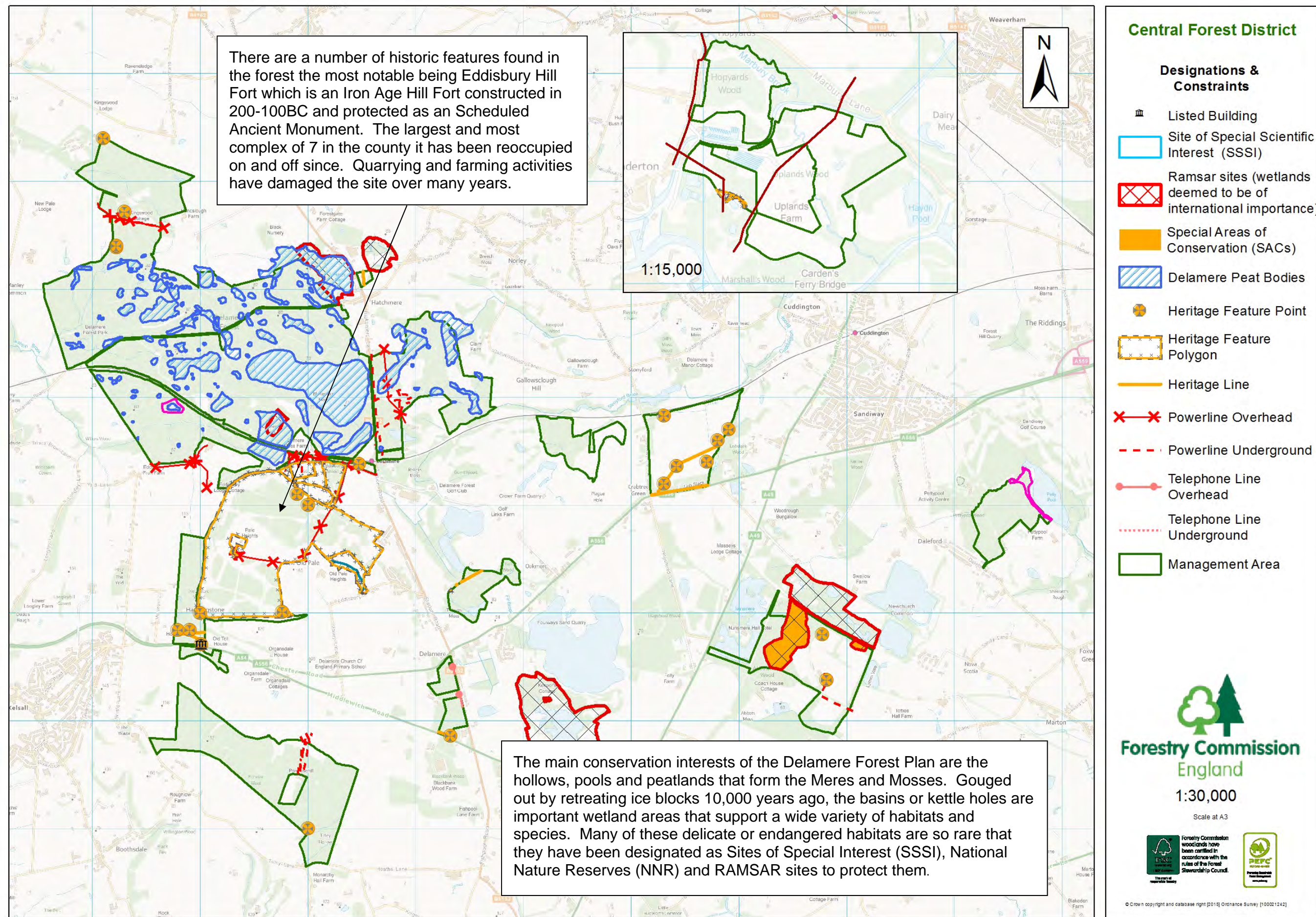
Scale at A3



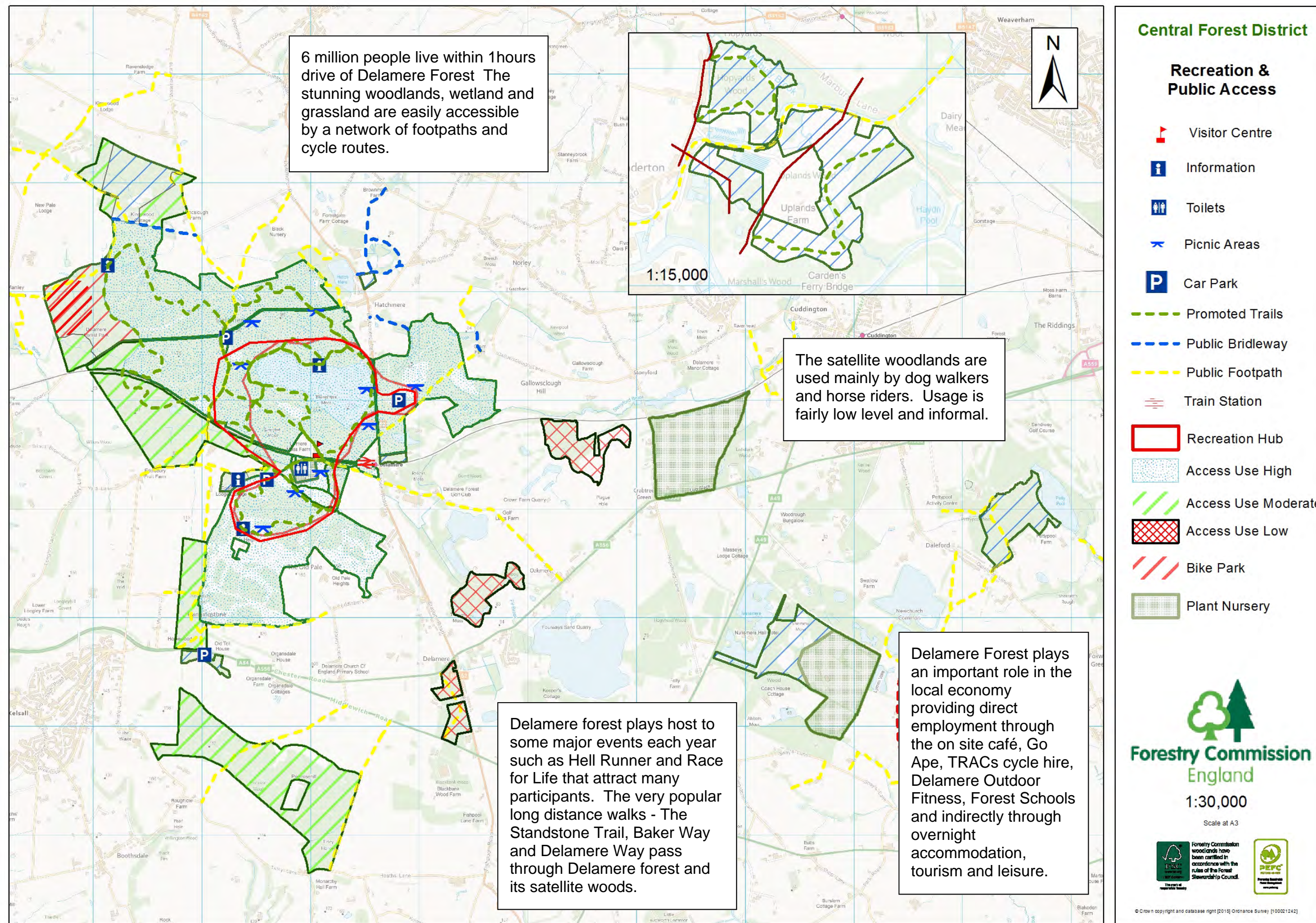
Forestry Commission woodlands have been certified in accordance with the rules of the Forest Stewardship Council.



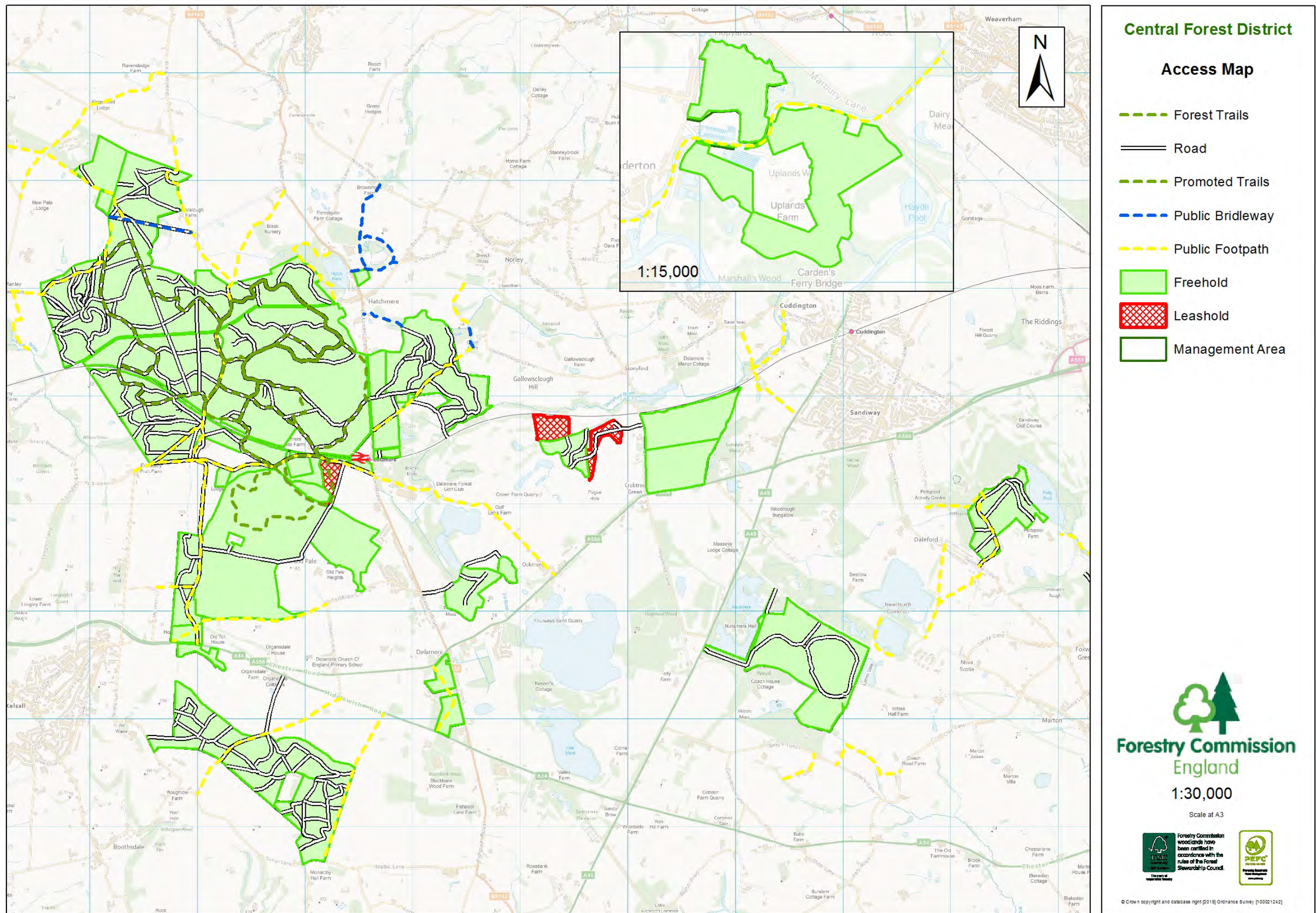




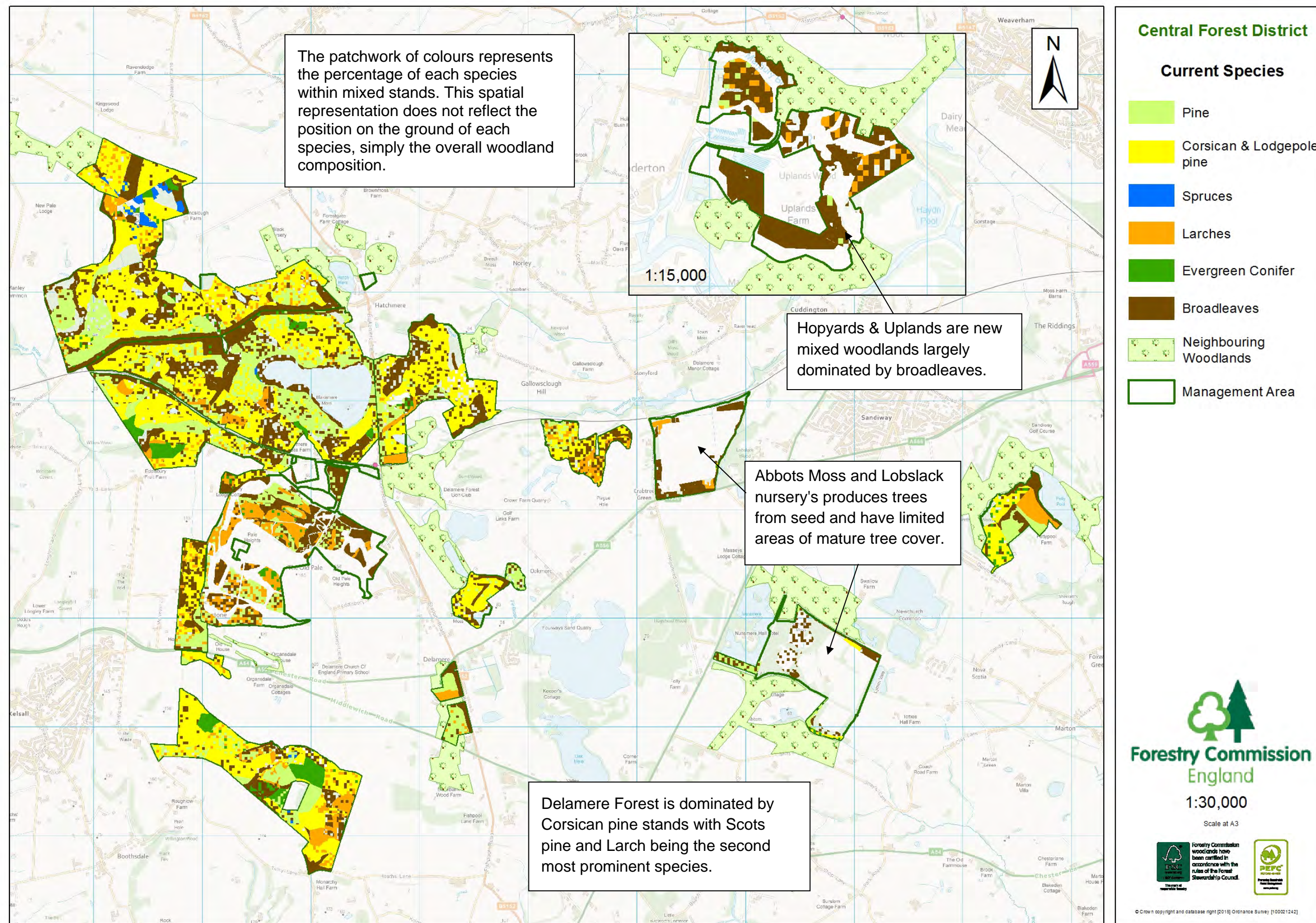




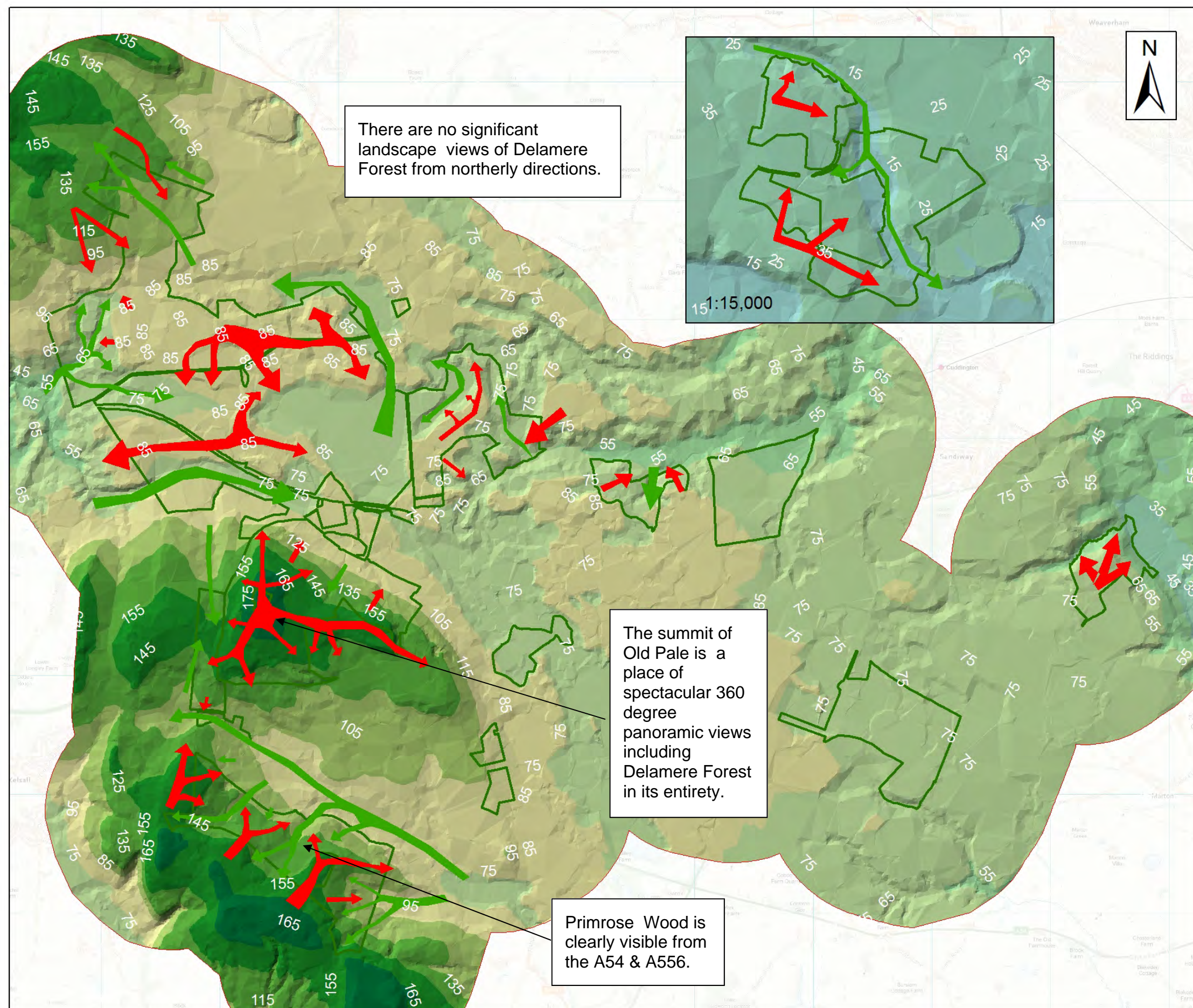















## Central Forest District

### Elevation & Landform

 Gullies, hollows & valley bottoms

 Ridge, Plateau or high ground

 Management Area

This map shows the underlying landform of Delamere Forest. The map shows that forest and outlying woodlands lie across a level, gently undulating landscape.

Only Old Pale & Primrose Wood are situated on hillsides & are prominent in the landscape.



