

Woodlands of Chiddingfold

Key



Management Area



Forestry Commission
England
South England Forest District

Woodlands of Chiddingfold Aerial

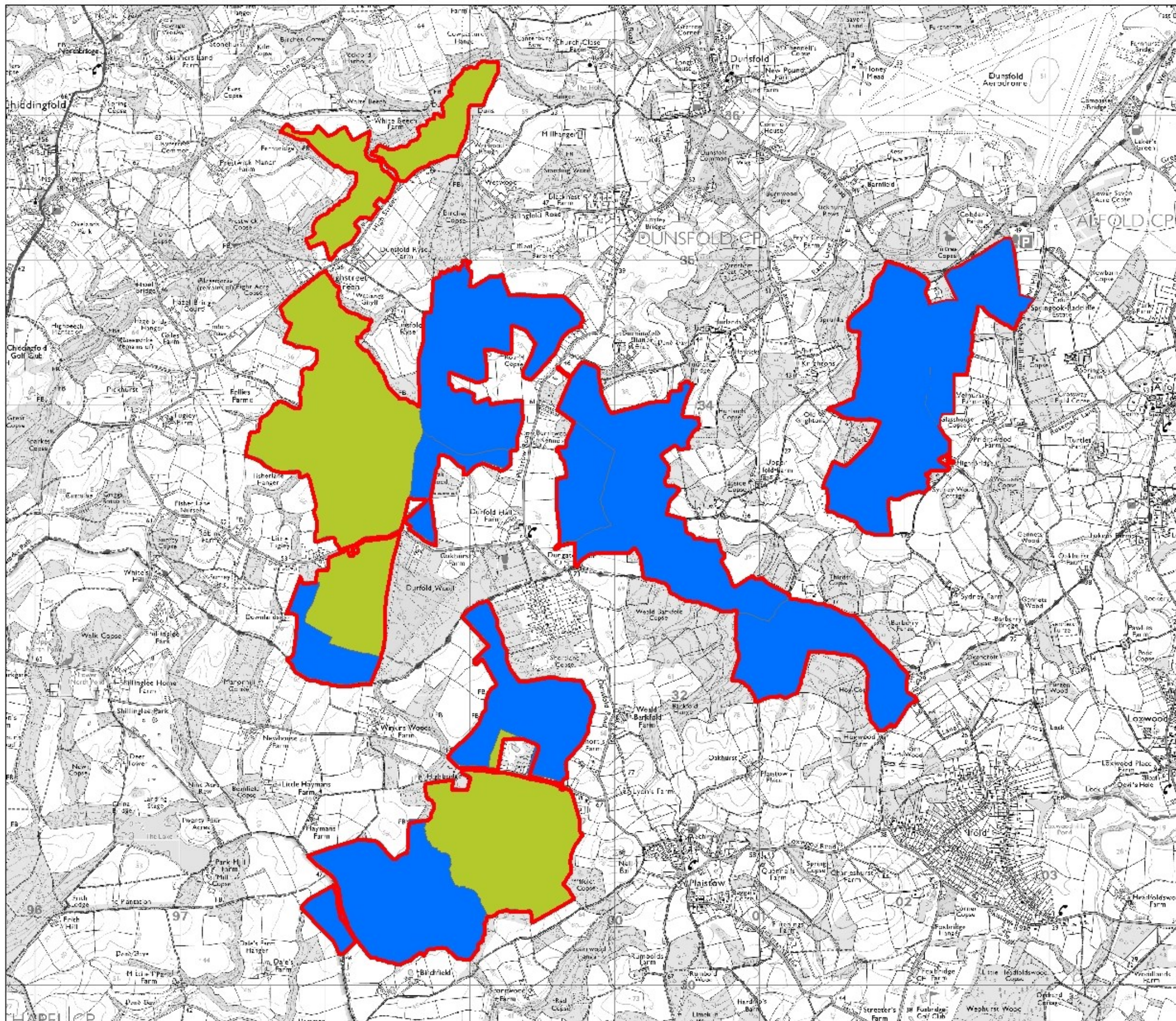
Key



Management Area

1:50,000

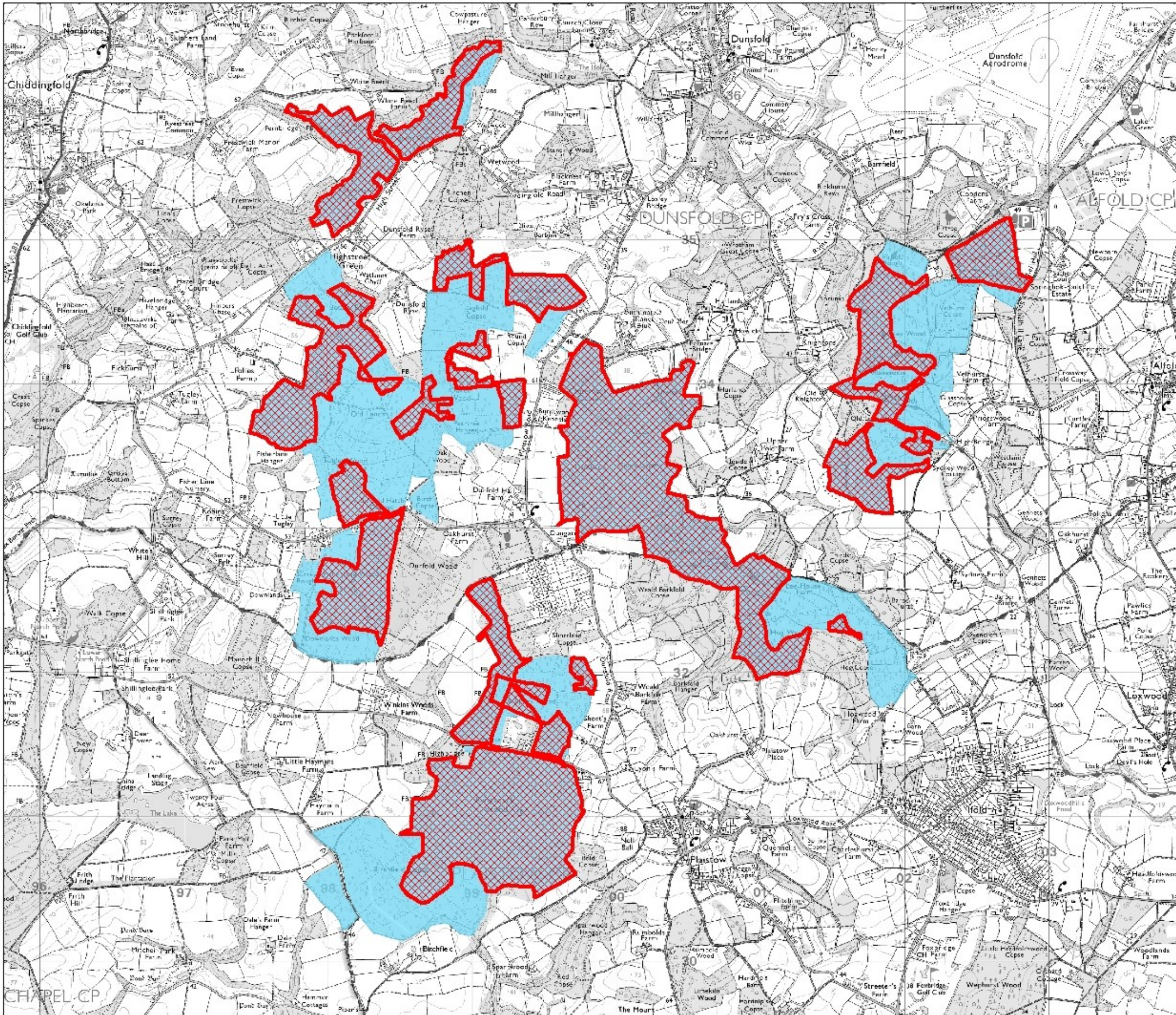




Chiddingfold Forest Tenure Map


Key

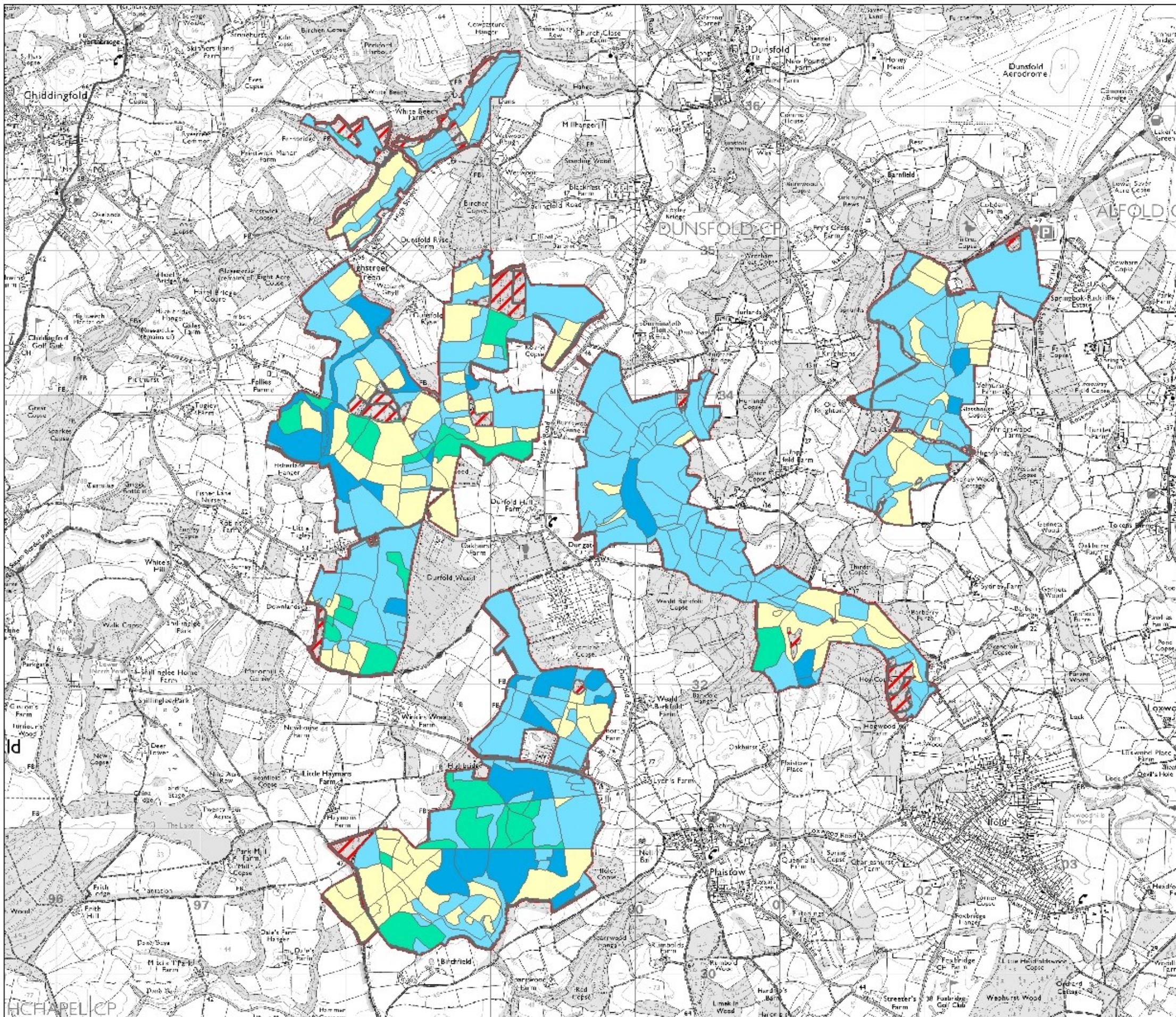
- Management Area
- Freehold Woodland
- Leasehold Woodland



Chiddingfold Forest
SSSI Extent

Key

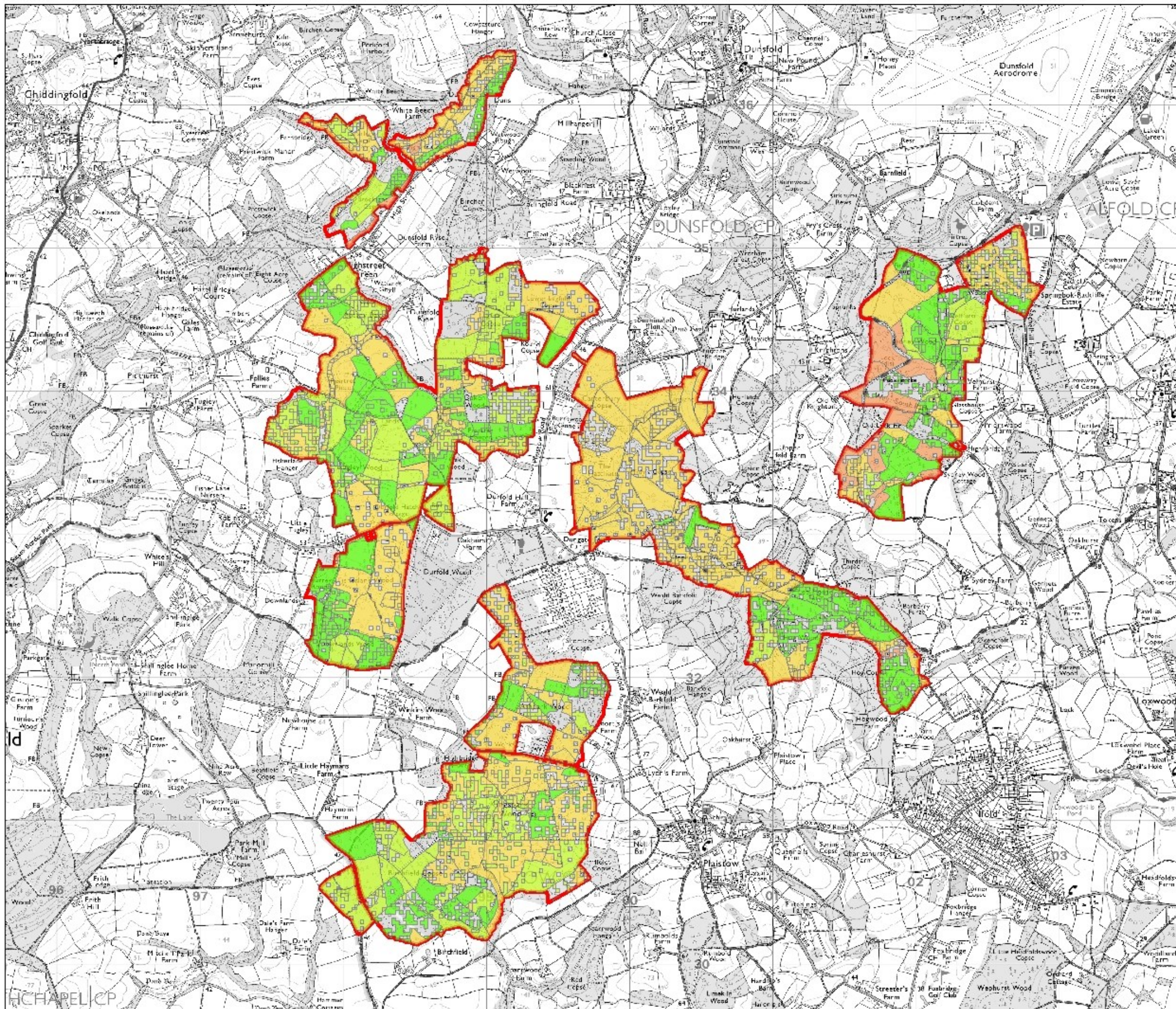
-  Site of Special Scientific Interest
-  Chiddingfold Block



Chiddingfold Forest Ancient Woodland & Semi Natural Scoring

Key

-  Management Area
-  1 Over 80% native
-  2 Between 50% and 80% native
-  3 Between 20% and 50% native
-  4 Less than 20% native
-  0 Currently open or unestablished woodland
-  Not Ancient Woodland



Chiddingfold Forest Indicative Age Diversity

Key

Management Area

Planting Years

- 1500
- 1501 - 1882
- 1883 - 1945
- 1946 - 1977
- 1978 - 2016

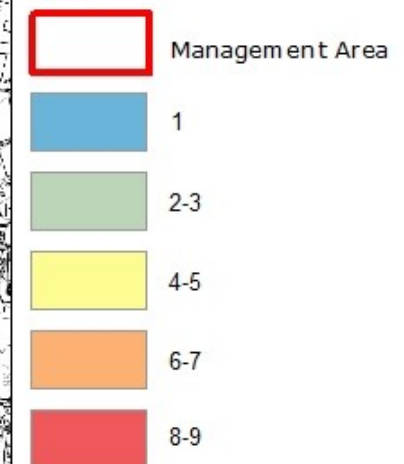
Gaps illustrate open space, areas covered by recent natural regeneration, non woodland areas or missing data.



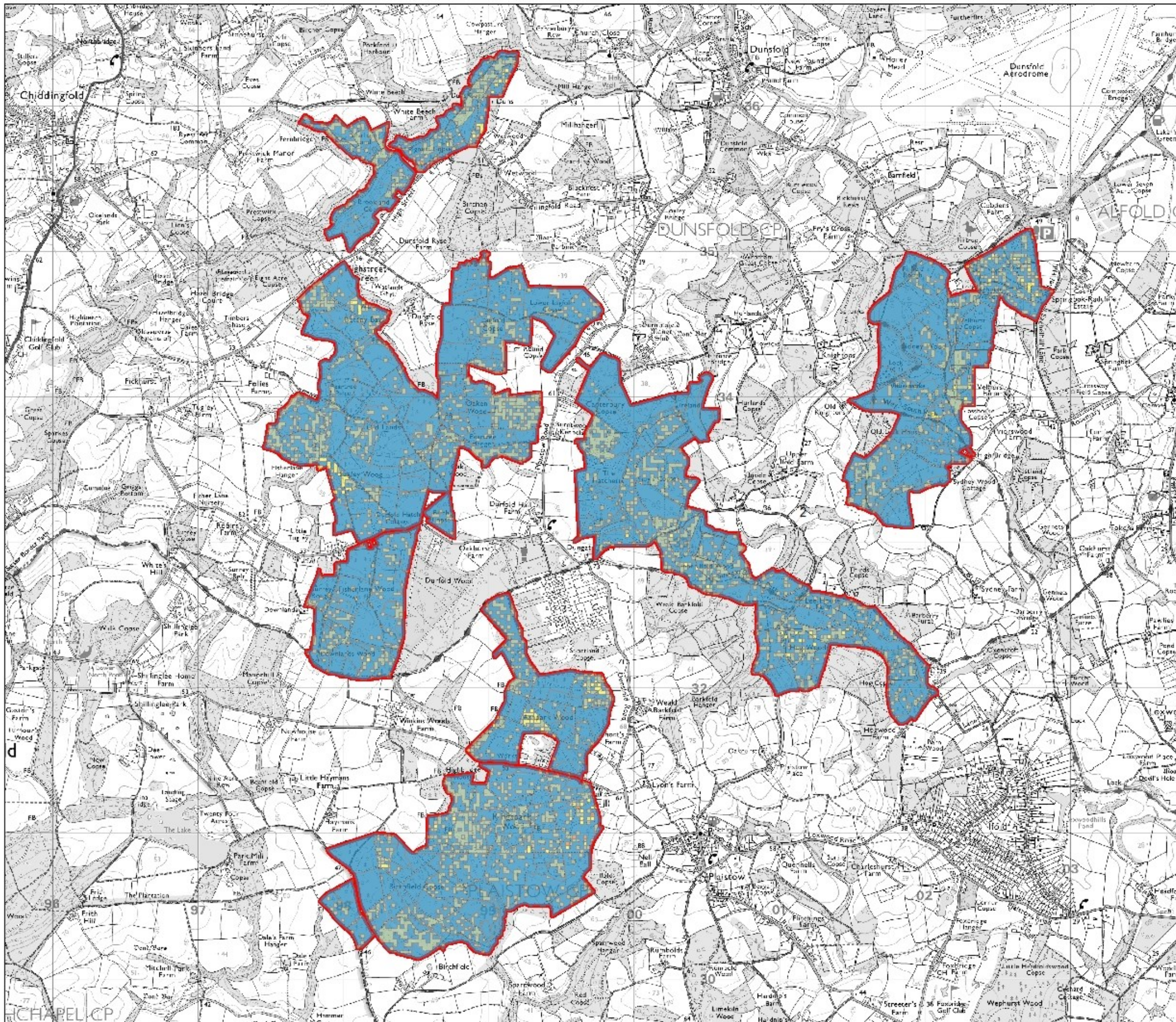
Forestry Commission
England
South England Forest District

Chiddingfold Forest Indicative Species Diversity

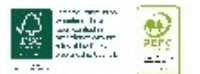
Key

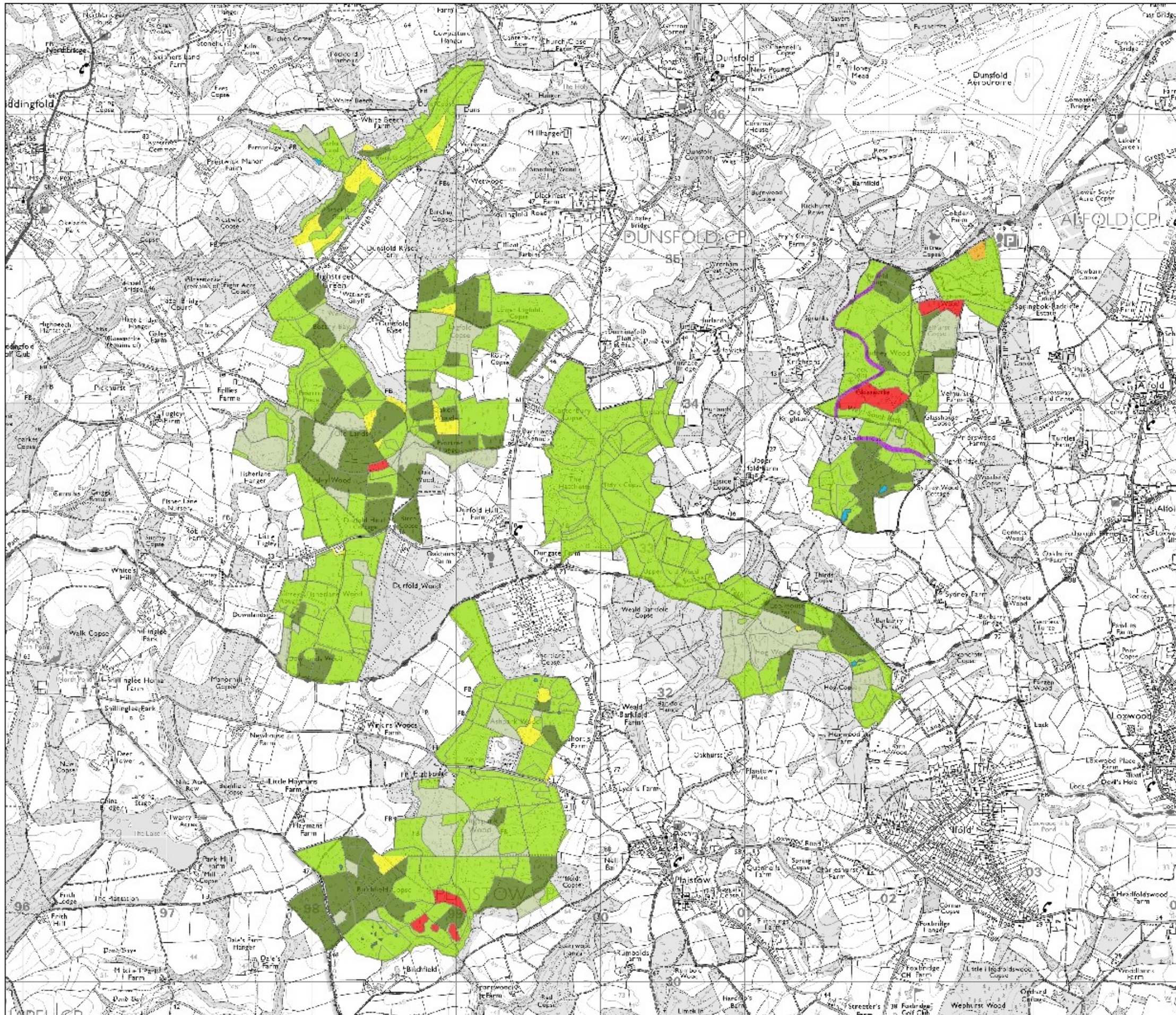


Shows the number of species with the canopy (including open space).



1:25,000

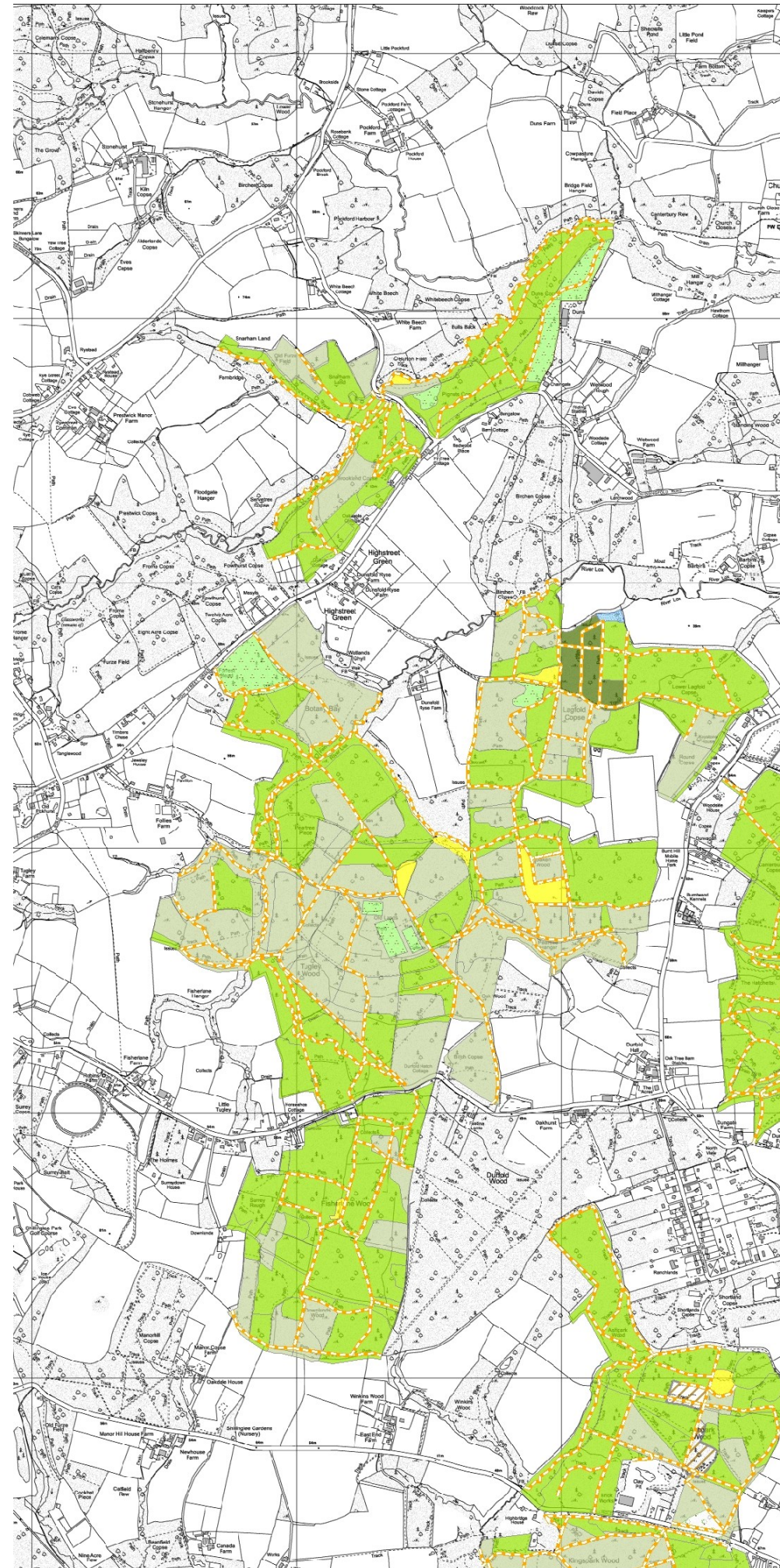




Chiddingfold Forest
Indicative Current
Structure

Key

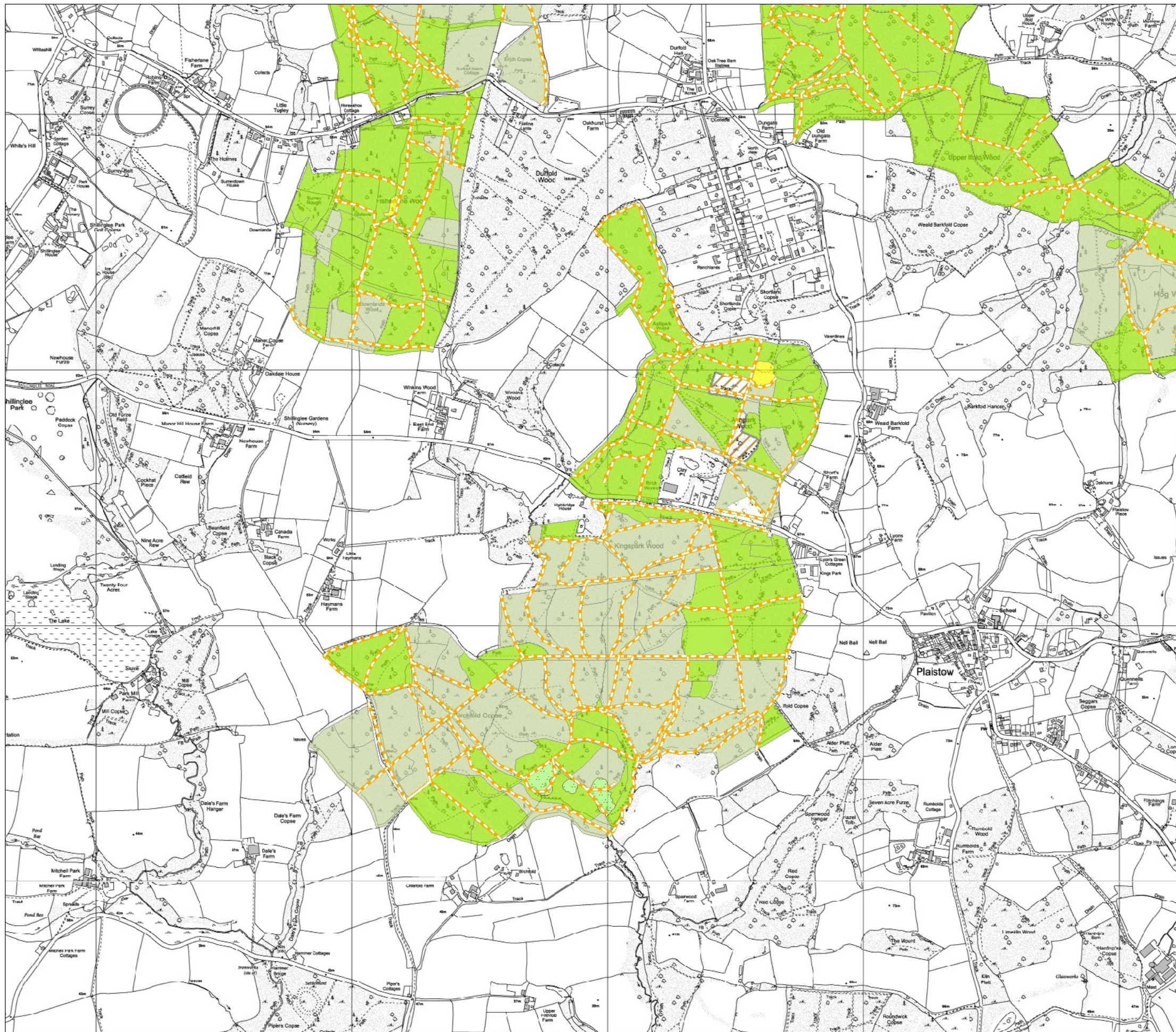
- Native and Honourary Broadleaf
- Conifer
- Non-Native Broadleaf
- Open Habitat
- Mixed Woodland
- Open water & Ponds
- Car Park
- Historic Canal




Forestry Commission
 England
South England Forest District

Chiddingfold Forest
Medium Term Vision

- Key**
- Managed Native Woodland
 Native broadleaved woodland. Predominantly (>80%) native or honorary-native species.
 - Mixed Woodland Management
 Woodland consisting of a mixture of native and non-native tree species, neither of which dominates more than 80% of the canopy.
 - Manage as open habitat
 - Priority Ecological Corridors
 Open ride and road network, connecting habitats and woodland for enhanced biodiversity.
 - Research Plantation
 - Rotational Scrub
 A mosaic of open space and scrub woodland. Maintain an approximate 50:50 balance between scrub and open space. High canopy will be maintained at less than 20% cover by removal of individual trees as necessary.
 - Open water
 - Wet Woodland Management
 Wet woodland and riverine habitat
 - Seed Orchard



South England Forest District

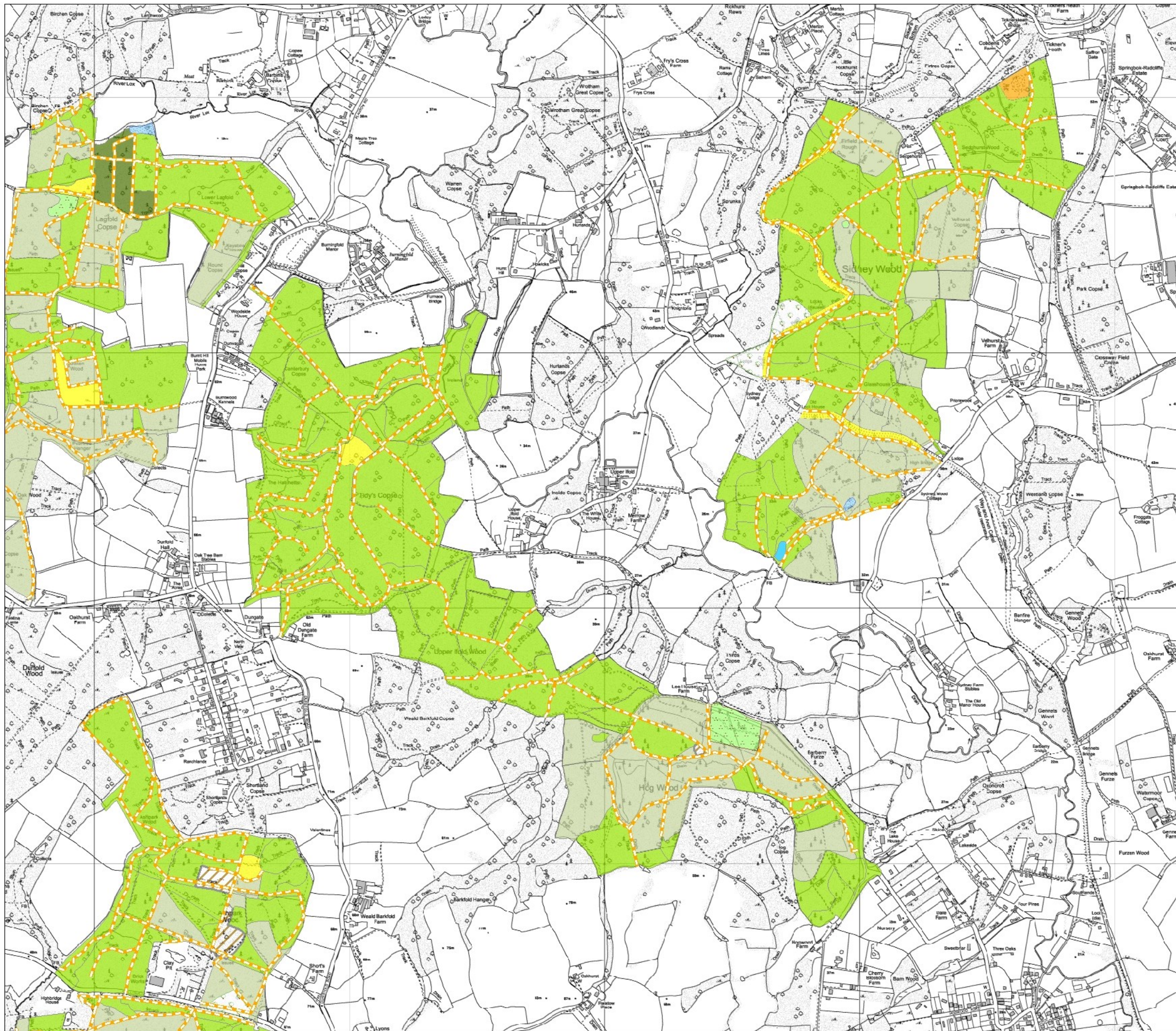
Chiddingfold Forest Medium Term Vision

Key

- Managed Native Woodland
Native broadleaved woodland.
Predominantly (>80%) native or
honorary-native species.
- Mixed Woodland Management
Woodland consisting of a mixture of
native and non-native tree species,
neither of which dominates more than
80% of the canopy.
- Priority Ecological Corridors
Open ride and road network,
connecting habitats and woodland
for enhanced biodiversity.
- Manage as open habitat
- Rotational Scub
A mosaic of open space and scrub woodland.
- Seed Orchard
- Wet Woodland Management
Wet woodland and riverine habitat
- Open water
& Ponds
- Research Plantation

1:10,000
at A2








South England Forest District


Chiddingfold Forest Medium Term Vision


Key


 Managed Native Woodland
Native broadleaved woodland.
Predominantly (>80%) native or honorary-native species.


 Mixed Woodland Management
Woodland consisting of a mixture of native and non-native tree species, neither of which dominates more than 80% of the canopy.

 Priority Ecological Corridors
Open ride and road network, connecting habitats and woodland for enhanced biodiversity.

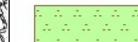
 Manage as open habitat

 Rotational Scub
A mosaic of open space and scrub woodland.

 Seed Orchard

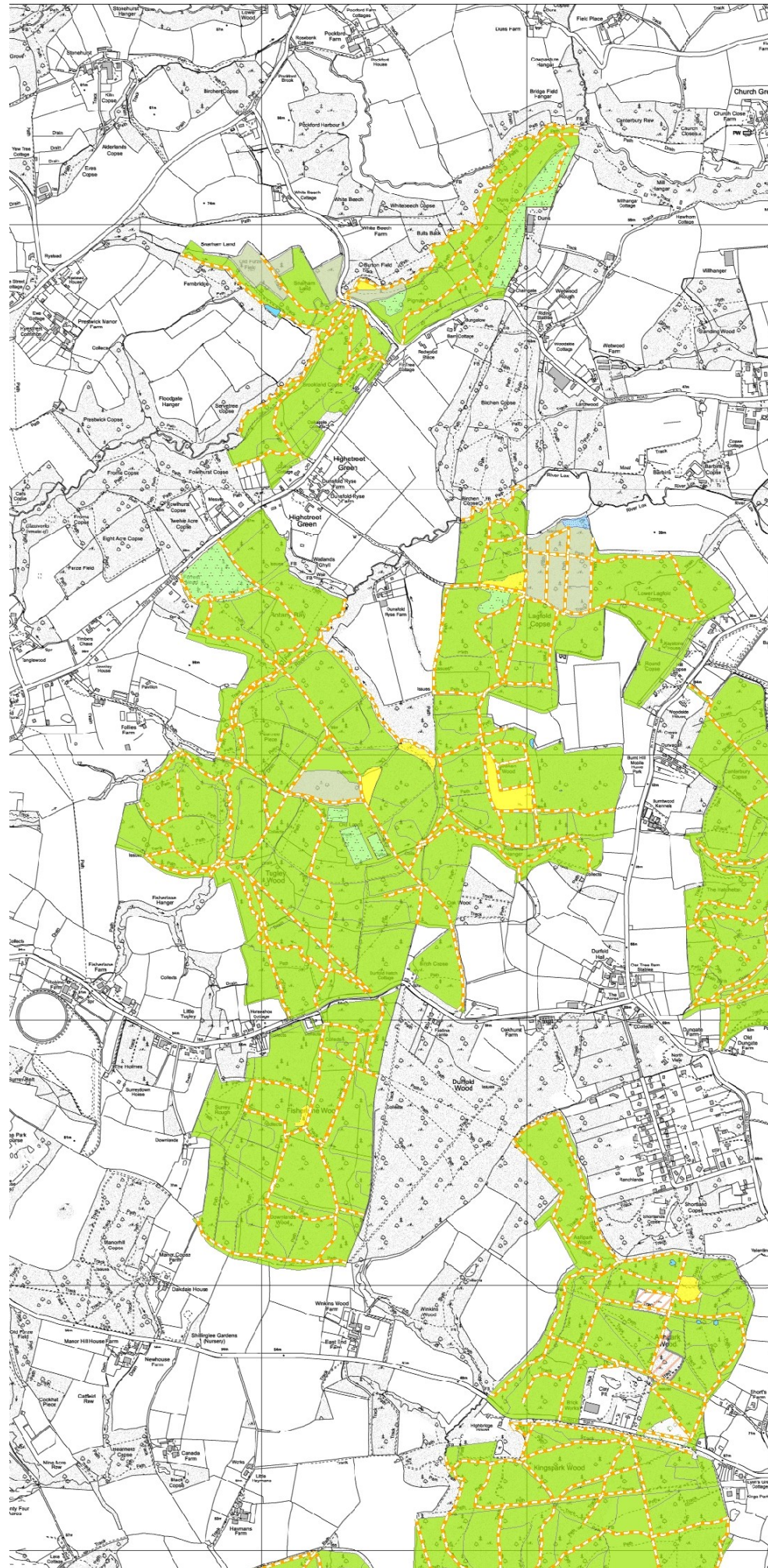
 Wet Woodland Management
Wet woodland and riverine habitat

 Open water & Ponds

 Research Plantation

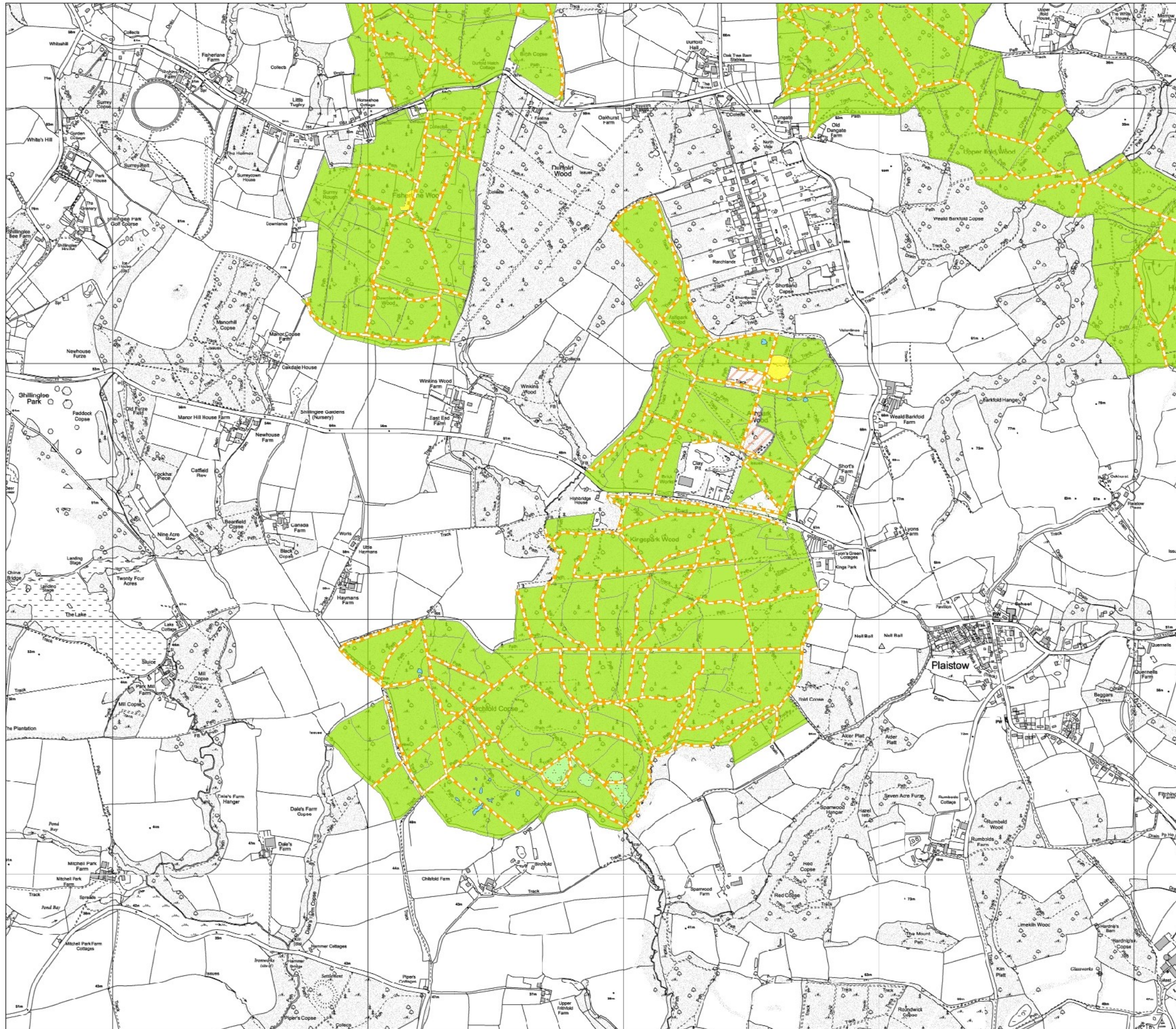
1:10,000
at A2





**Chiddingfold Forest
Long Term Vision**

- Key**
- Managed Native Woodland**
Native broadleaved woodland. Predominantly (>80%) native or honorary-native species.
 - Mixed Woodland Management**
Woodland consisting of a mixture of native and non-native tree species, neither of which dominates more than 80% of the canopy.
 - Manage as open habitat**
 - Priority Ecological Corridors**
Open ride and road network, connecting habitats and woodland for enhanced biodiversity.
 - Research Plantation**
 - Rotational Scrub**
A mosaic of open space and scrub woodland. Maintain an approximate 50:50 balance between scrub and open space. High canopy will be maintained at less than 20% cover by removal of individual trees as necessary.
 - Open water**
 - Wet Woodland Management**
Wet woodland and riverine habitat
 - Seed Orchard**



Forestry Commission
England

South England Forest District

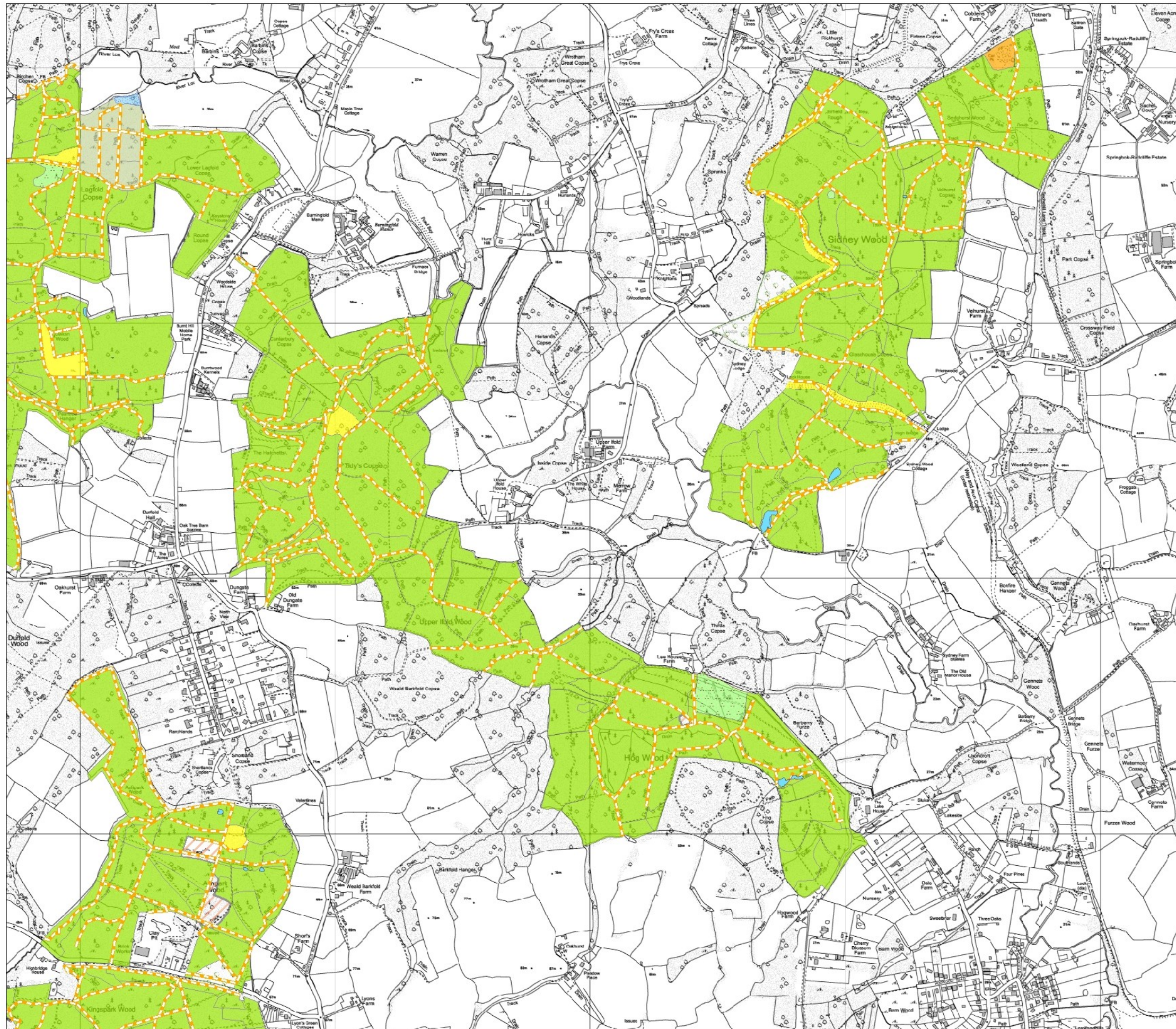
Chiddingfold Forest Long Term Vision

Key

- Managed Native Woodland
Native broadleaved woodland.
Predominantly (>80%) native or honorary-native species.
- Mixed Woodland Management
Woodland consisting of a mixture of native and non-native tree species, neither of which dominates more than 80% of the canopy.
- Priority Ecological Corridors
Open ride and road network, connecting habitats and woodland for enhanced biodiversity.
- Manage as open habitat
- Rotational Scrub
A mosaic of open space and scrub woodland.
- Seed Orchard
- Wet Woodland Management
Wet woodland and riverine habitat
- Open water & Ponds
- Research Plantation

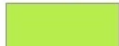







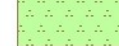

1:10,000
at A2








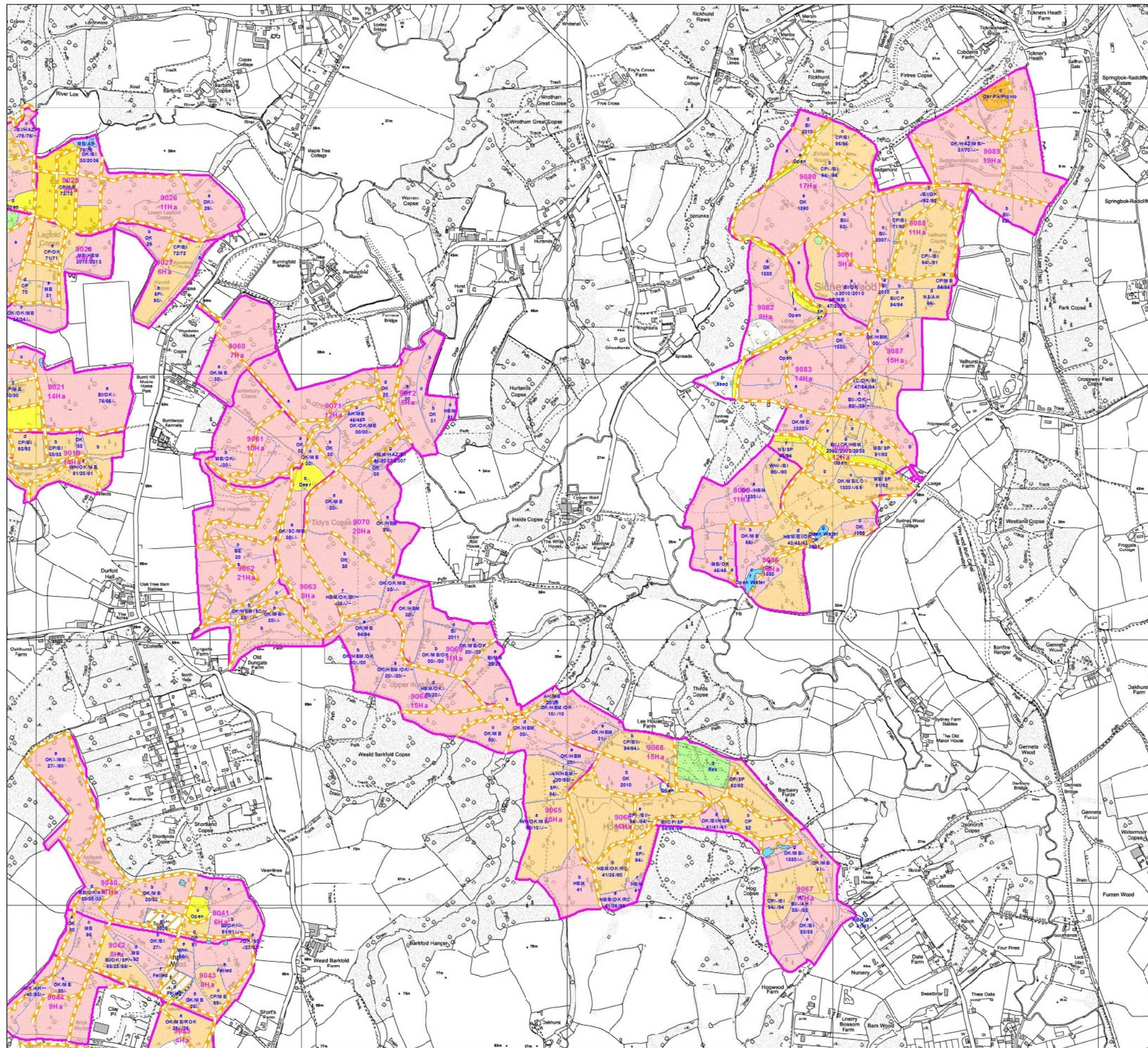
Chiddingfold Forest Long Term Vision

Key

-  Managed Native Woodland
Native broadleaved woodland.
Predominantly (>80%) native or honorary-native species.
-  Mixed Woodland Management
Woodland consisting of a mixture of native and non-native tree species, neither of which dominates more than 80% of the canopy.
-  Priority Ecological Corridors
Open ride and road network, connecting habitats and woodland for enhanced biodiversity.
-  Manage as open habitat
-  Rotational Scub
A mosaic of open space and scrub woodland.
-  Seed Orchard
-  Wet Woodland Management
Wet woodland and riverine habitat
-  Open water & Ponds
-  Research Plantation
-  Car Park

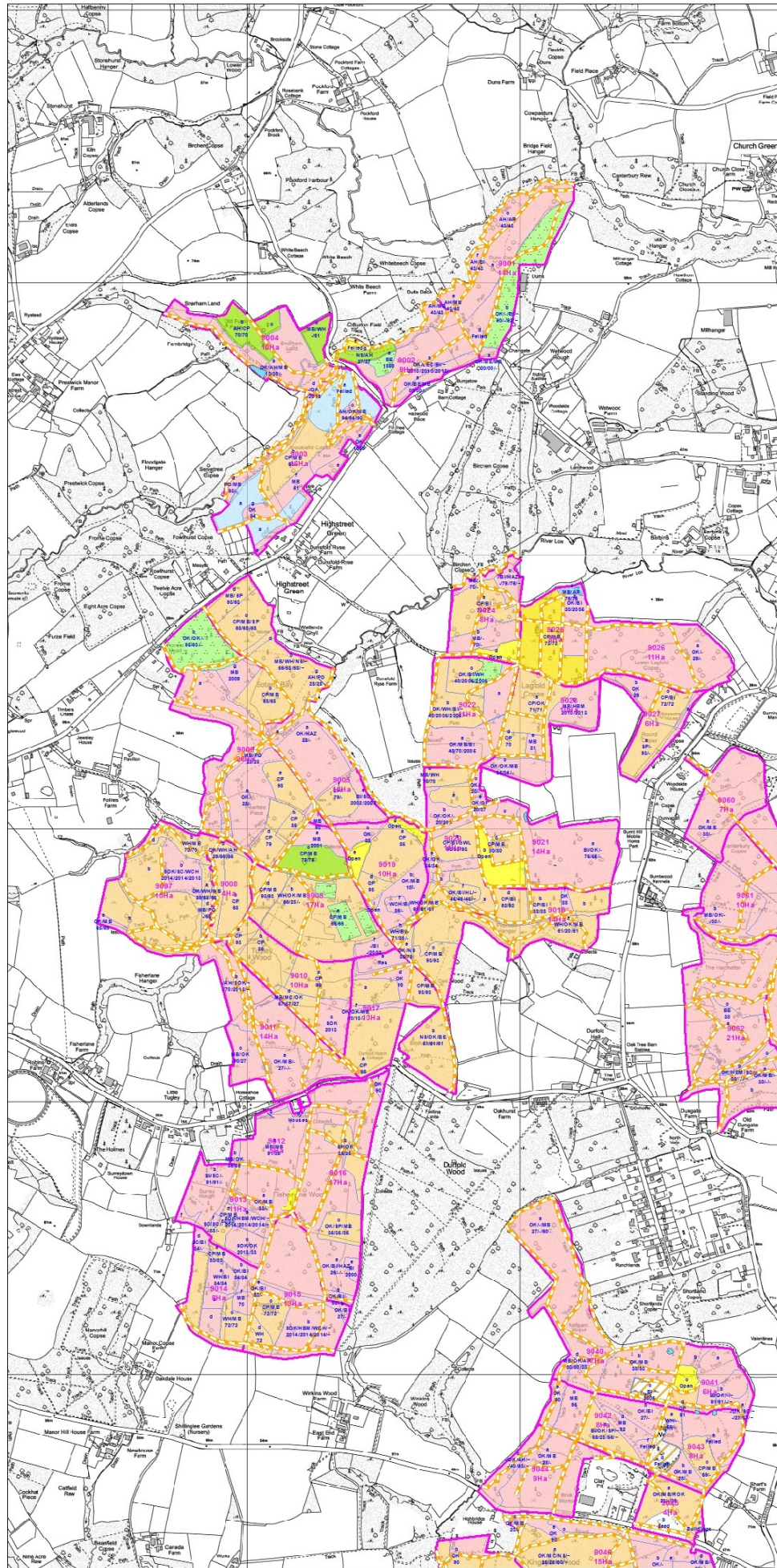
1:10,000
at A2



Chiddingfold Forest Habitat Restoration & Felling

- Native Broadleaf Woodland Restoration**
 Manage under an appropriate shelterwood system. Favour best native tree, focussing on the production of quality timber and the gradual reduction of non native species to 20% of the canopy or less
- Native Broadleaf Woodland Management**
 Manage under an appropriate shelterwood system, favouring the best native tree and focussing on the production of quality timber
- Road/Ride Edge Management**
 Enhance the woodland edge developing a scalloped and graded structure in accordance with best practice guidelines in the SSSI management plan.
- Rotational Scrub**
 A mosaic of open space and scrub woodland. Maintain an approximate 50:50 balance between scrub and open space. High canopy will be maintained at less than 20% cover by removal of individual trees as necessary.
- Wet Woodland Management**
 Manage under an appropriate shelterwood system. Favour best native tree, focussing on the development of wet woodland and riverine habitat characteristics.
- Open water and ponds**
- Car Park**
- Manage as open habitat**
- Seed Orchard and Open Habitat**
- Research Plantation**
- Compartments**
- Sub-Compartments**



**Chiddingfold Forest
Habitat Restoration
& Felling**

- Mixed Woodland Management**
Manage under an appropriate shelterwood system. Favour best tree, focussing on the production of quality timber and species diversity.
- Native Broadleaf Woodland Restoration**
Manage under an appropriate shelterwood system. Favour best native tree, focussing on the production of quality timber and the gradual reduction of non native species to 20% of the canopy or less
- Native Broadleaf Woodland Management**
Manage under an appropriate shelterwood system, favouring the best native tree and focussing on the production of quality timber
- Road/Ride Edge Management**
Enhance the woodland edge developing a scalloped and graded structure in accordance with Chiddingfold SSSI management plan
- Establishment Phase**
Natural regeneration from surrounding native seed source
- Clearfell 2027-2031**
- Manage as Open habitat**
- Research Plantation**
- Rotational Scrub**
A mosaic of open space and scrub woodland. Maintain an approximate 50:50 balance between scrub and open space. High canopy will be maintained at less than 20% cover by removal of individual trees as necessary.
- Wet Woodland Management**
Manage under an appropriate shelterwood system. Favour best native tree, focussing on the development of wet woodland and riverine habitat characteristics.
- Open water**
- Sub-Compartments**
- Compartments**

1:10,000

 at A2
© Crown copyright and database right (2015) All rights reserved. Ordnance Survey Licence number 100021242








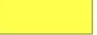

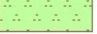


Produced by the Planning Team
Date: 20/01/2016

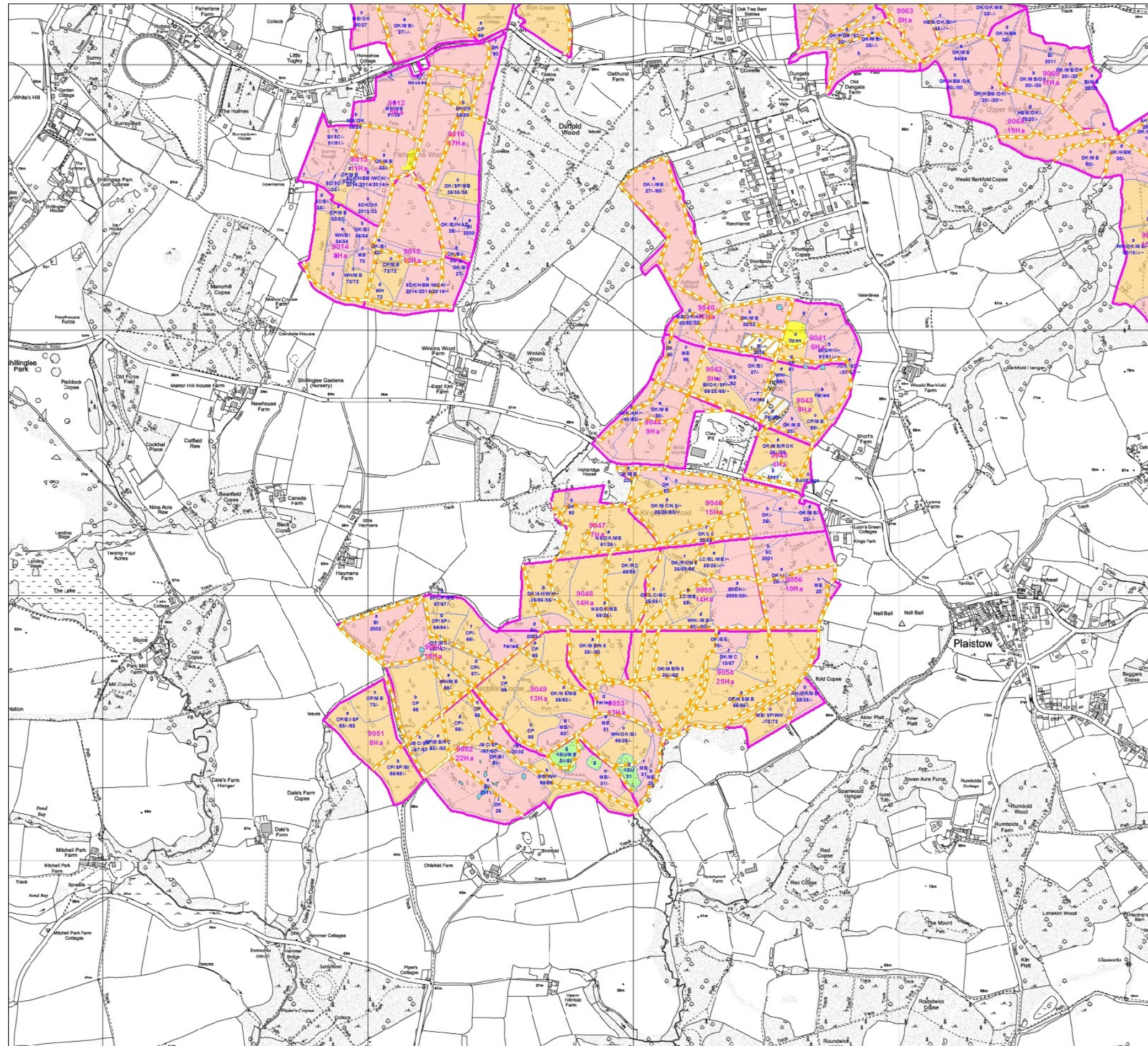
Declaration by FC as an operator. All Timber arising from the Forest Enterprise Estate represents a negligible risk under EUTR (No 995/210).



South England Forest District

Chiddingfold Forest Habitat Restoration & Felling

-  Native Broadleaf Woodland Restoration
Manage under an appropriate shelterwood system. Favour best native tree, focussing on the production of quality timber and the gradual reduction of non native species to 20% of the canopy or less
-  Native Broadleaf Woodland Management
Manage under an appropriate shelterwood system, favouring the best native tree and focussing on the production of quality timber
-  Road/Ride Edge Management
Enhance the woodland edge developing a scalloped and graded structure in accordance with best practice guidelines in the SSSI management plan.
-  Rotational Scrub
A mosaic of open space and scrub woodland. Maintain an approximate 50:50 balance between scrub and open space. High canopy will be maintained at less than 20% cover by removal of individual trees as necessary.
-  Wet Woodland Management
Manage under an appropriate shelterwood system. Favour best native tree, focussing on the development of wet woodland and riverine habitat characteristics.
-  Open water and ponds
-  Car Park
-  Manage as open habitat
-  Seed Orchard and Open Habitat
-  Research Plantation
-  Compartments
-  Sub-Compartments



Produced by the Planning Team
Date: 20/01/2016

Declaration by FC as an operator. All Timber arising from the Forest Enterprise Estate represents a negligible risk under EUTR (No 995/210).

1:10,000
at A2





© Crown copyright and database right [2015] All rights reserved. Ordnance Survey Licence number [100021242]